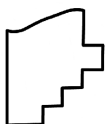
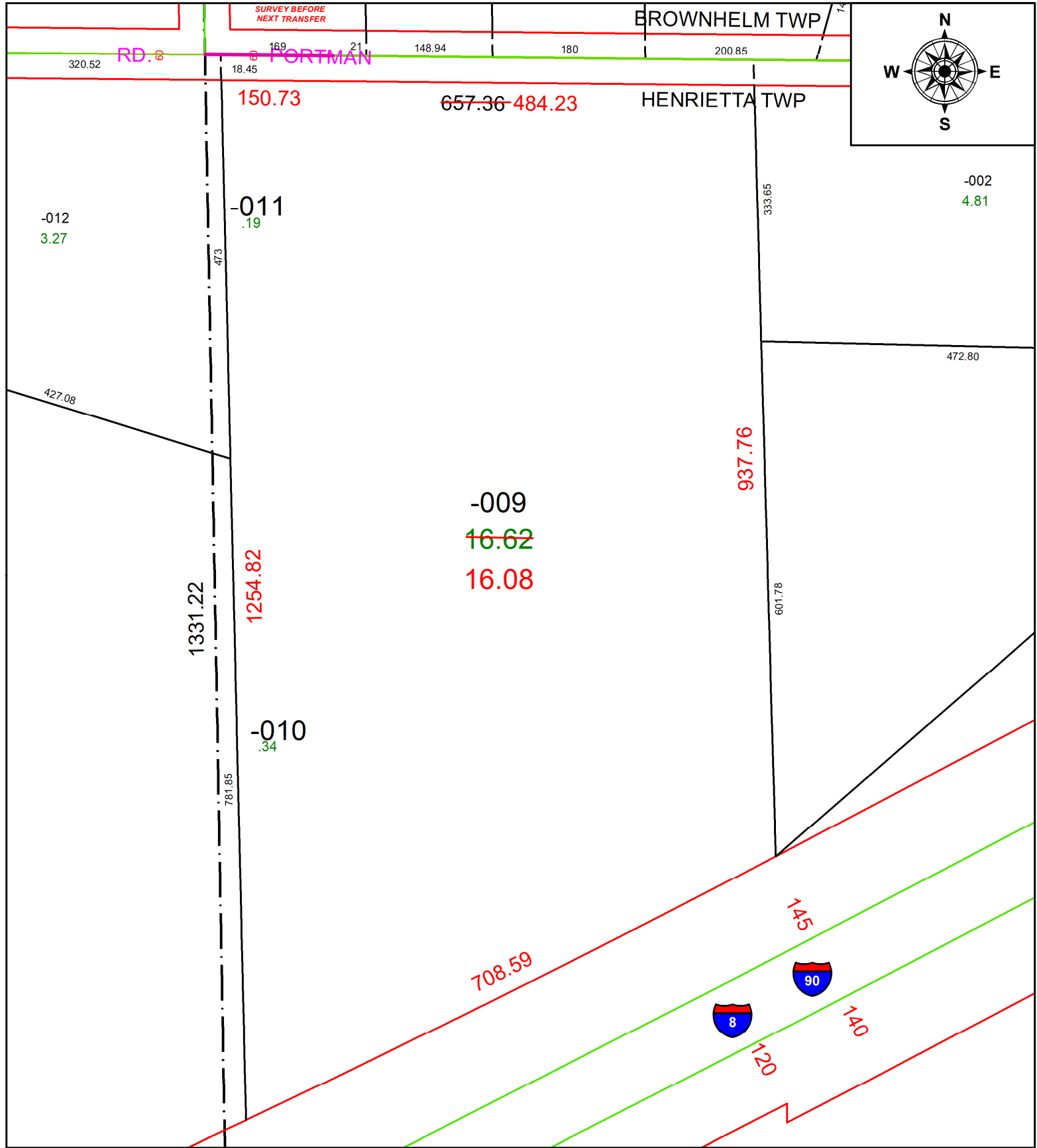


PARENT PARCEL: 08-00-084-000-009

CHILD PARCEL: **AC CORR PER SURV BY TIMOTHY D. HOZALSKI**

22-04841-D

STARTING POINT: C/L OF PEASLEY AND PORTMAN RD



SPLITS/DEEDS PROCESSED
 LORAIN COUNTY TAX MAP DEPARTMENT
 226 MIDDLE AVE. ELYRIA, OH

SURVEYED BY: TIMOTHY D. HOZALSKI
 CLOSURE: 1: 793340
 MAP PAGE(S): 08-00-084-A
 APPROVED BY: AC DATE: 4/20/2022
 SCALE: 1" = 150 PRIOR INSTRUMENT: 2019- 0737295