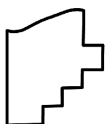
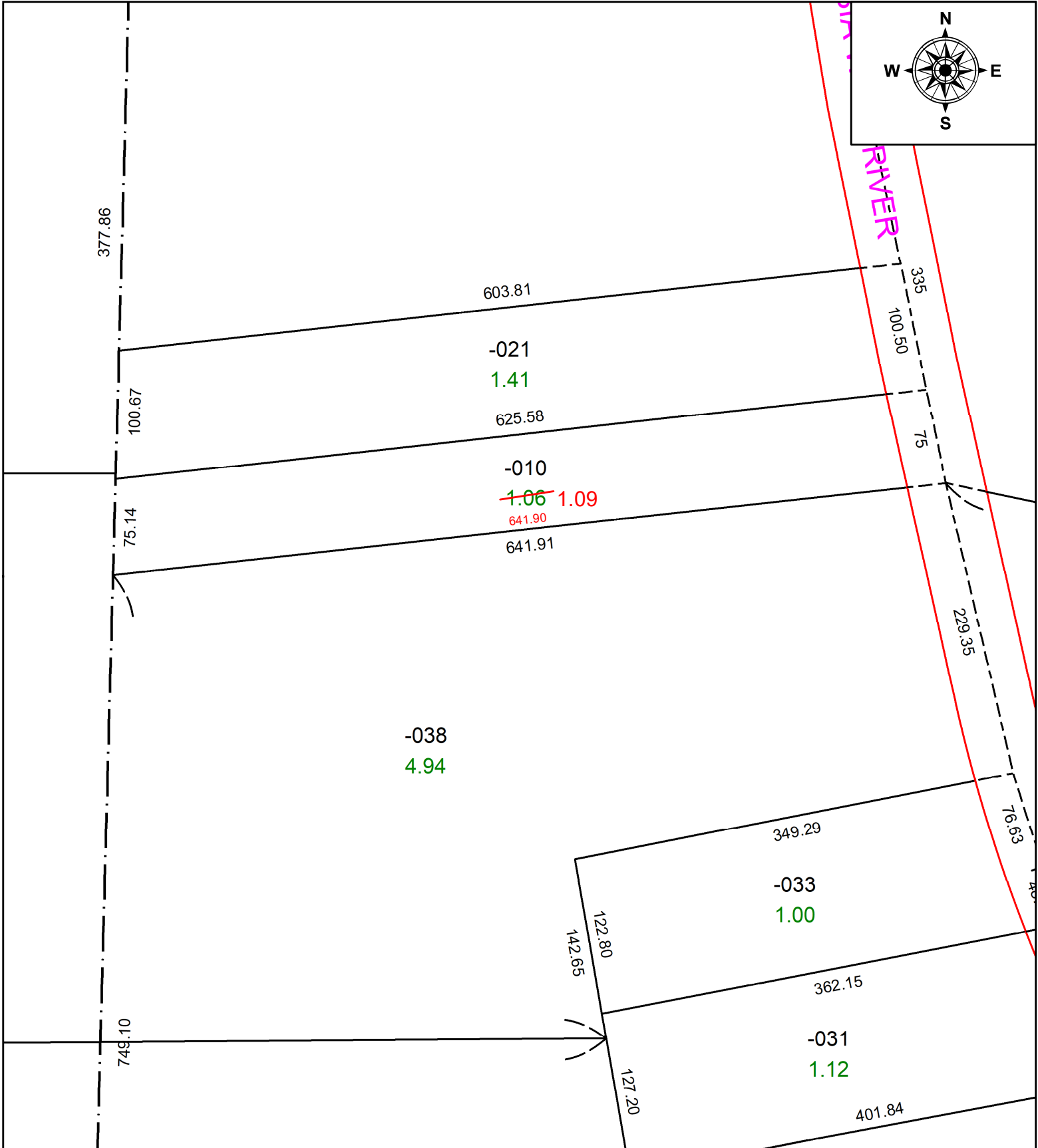
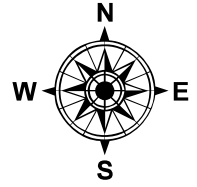


PARENT PARCEL: 12-00-052-000-010

CHILD PARCEL: **AC. CORR. PER SURVEY GEORGE HOFMANN**

STARTING POINT: CL OF PUEBLO DR. & LINE BETWEEN O.L 20 & 21

22-04834-C



SPLITS/DEEDS PROCESSED
 LORAIN COUNTY TAX MAP DEPARTMENT
 226 MIDDLE AVE. ELYRIA, OH

SURVEYED BY: GEORGE HOFMANN

CLOSURE: 1: 299635

MAP PAGE(S): 12-00-052

APPROVED BY: DMA DATE: 4/8/2022

SCALE: 1" = 100' PRIOR INSTRUMENT: 2021-0830931