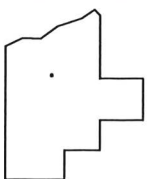
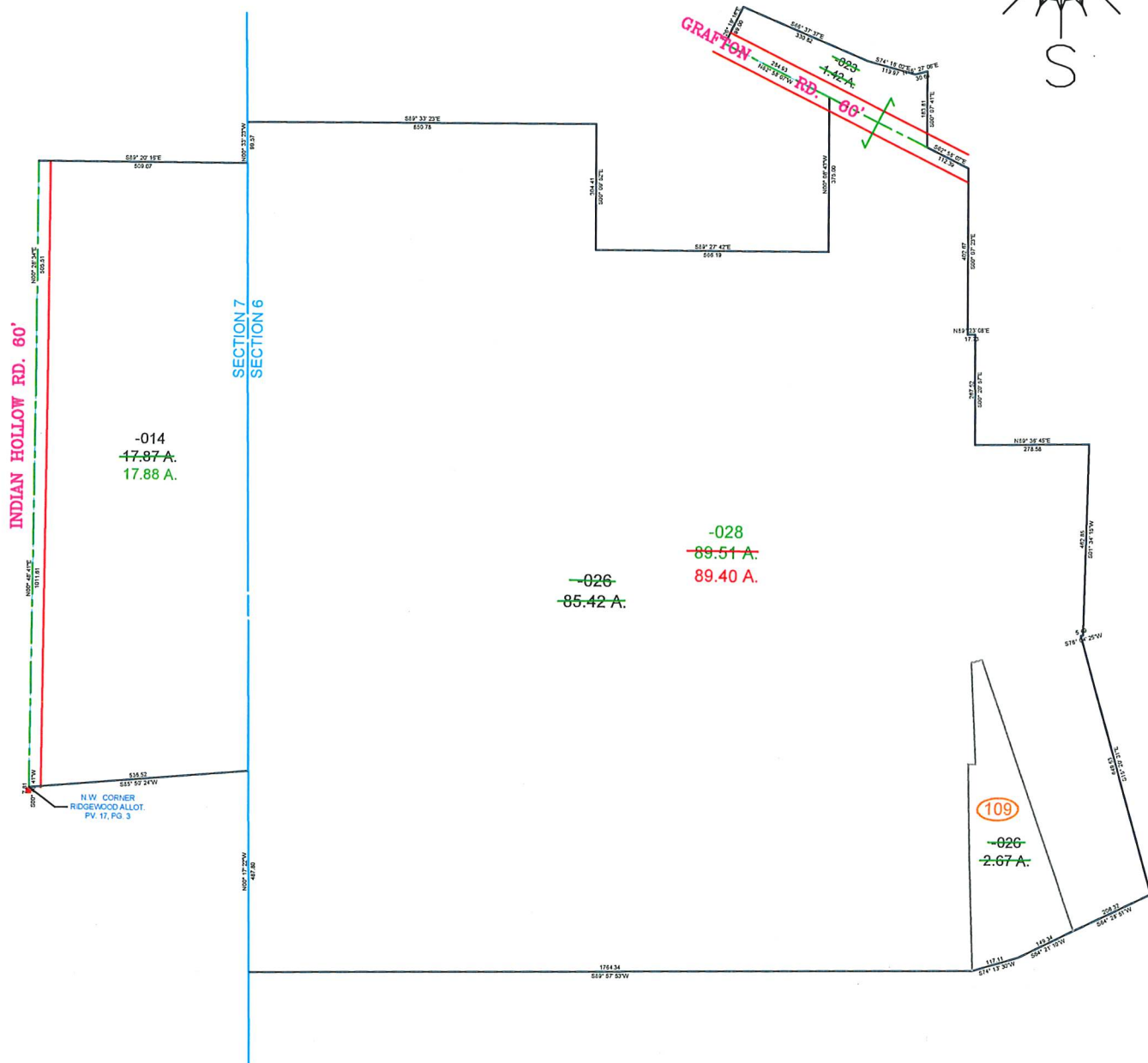
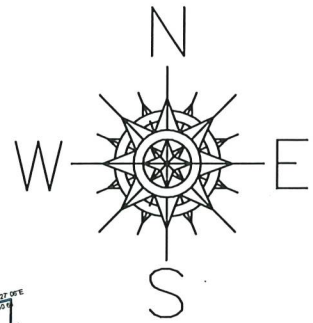


PARENT PARCEL: COMB. 10-00-006-101-023, -026, 10-00-006-109-026 & AC. CORR. 10-00-007-103-014
 CHILD PARCEL: 10-00-006-101-028
 STARTING POINT: N.W. CORNER OF RIDGEWOOD ALLOT. PV. 17 PG. 3

24-04832



SPLITS/DEEDS PROCESSED
 LORAIN COUNTY TAX MAP DEPARTMENT
 226 MIDDLE AVE. ELYRIA, OHIO

SURVEYED BY: PETAR ERAK
 CLOSURE: 1: 10,000
 MAP PAGE(S): 10-00-006 & -007
 APPROVED BY: TJS DATE: 4/24/2024
 SCALE: 1" = 400 PRIOR INSTRUMENT: 2010-0335367