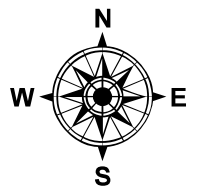
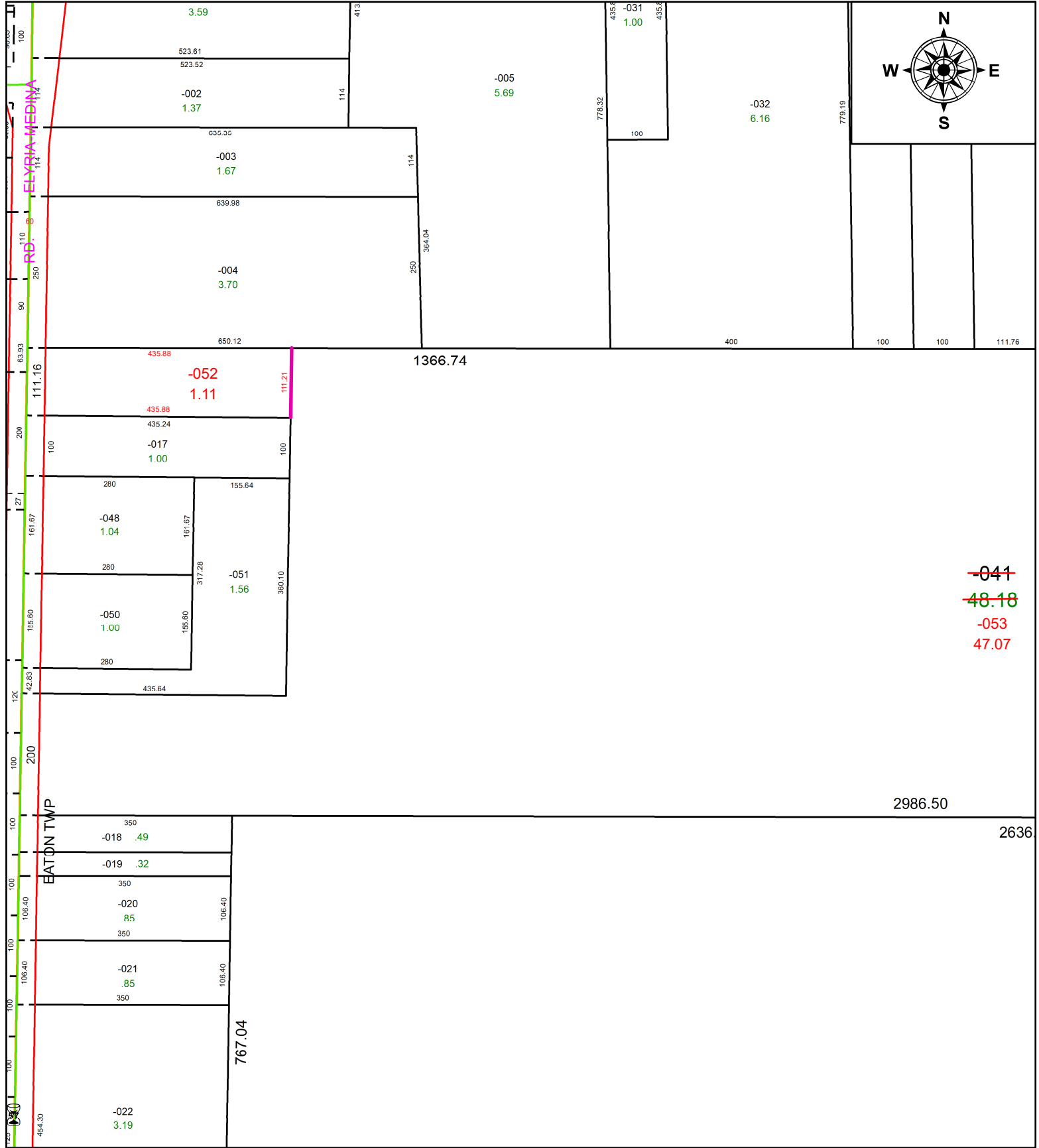


PARENT PARCEL: 11-00-096-000-041

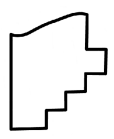
CHILD PARCEL: 11-00-096-000-052 & -053

STARTING POINT: C/L OF SR 82 AND SR 57

24-04831



~~-041~~
~~48.18~~
-053
47.07



SPLITS/DEEDS PROCESSED
LORAIN COUNTY TAX MAP DEPARTMENT
226 MIDDLE AVE. ELYRIA, OH

SURVEYED BY: THOMAS A. SIMON SURV # 51139
CLOSURE: 1: 372768
MAP PAGE(S): 11-00-096
APPROVED BY: AC DATE: March 15, 2024
SCALE: 1 in = 210 ft PRIOR INSTRUMENT: 2002- 0822390