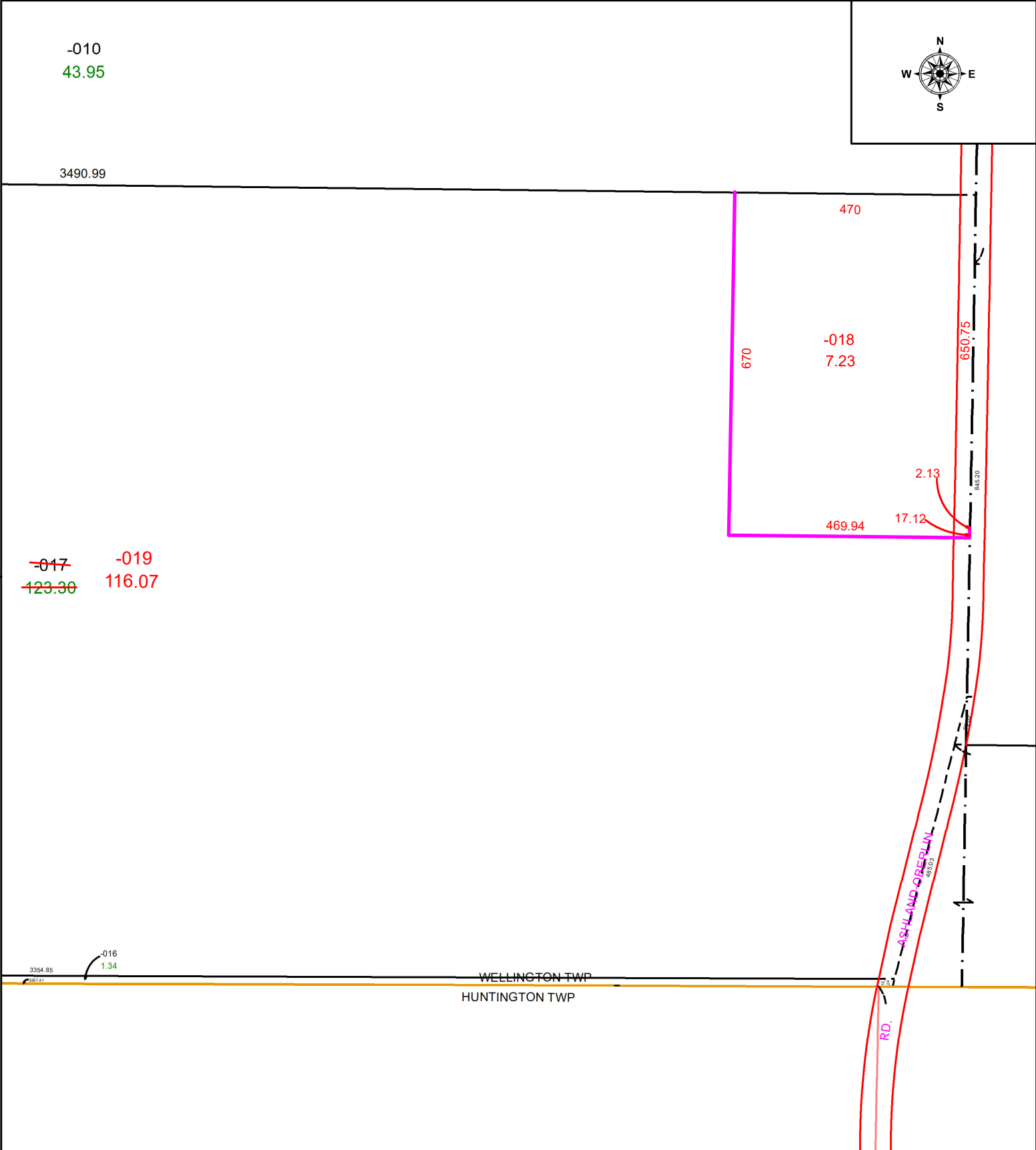
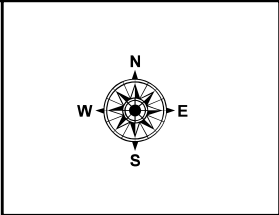


PARENT PARCEL: 18-00-025-000-017

CHILD PARCEL: 18-00-025-000-018 & -019

STARTING POINT: STONE MONUMENT BOX @ SOUTH WEST CORNER OF O.L. 25

24-04824



SPLITS/DEEDS PROCESSED
 LORAIN COUNTY TAX MAP DEPARTMENT
 226 MIDDLE AVE. ELYRIA, OH

SURVEYED BY: RICHARD FREDRICKSON SURVEY # 51136
CLOSURE: 1: 732057
MAP PAGE(S): 18-00-025
APPROVED BY: WRZ **DATE:** 3/13/2024
SCALE: 1" = 250 **PRIOR INSTRUMENT:** #2021-0815054