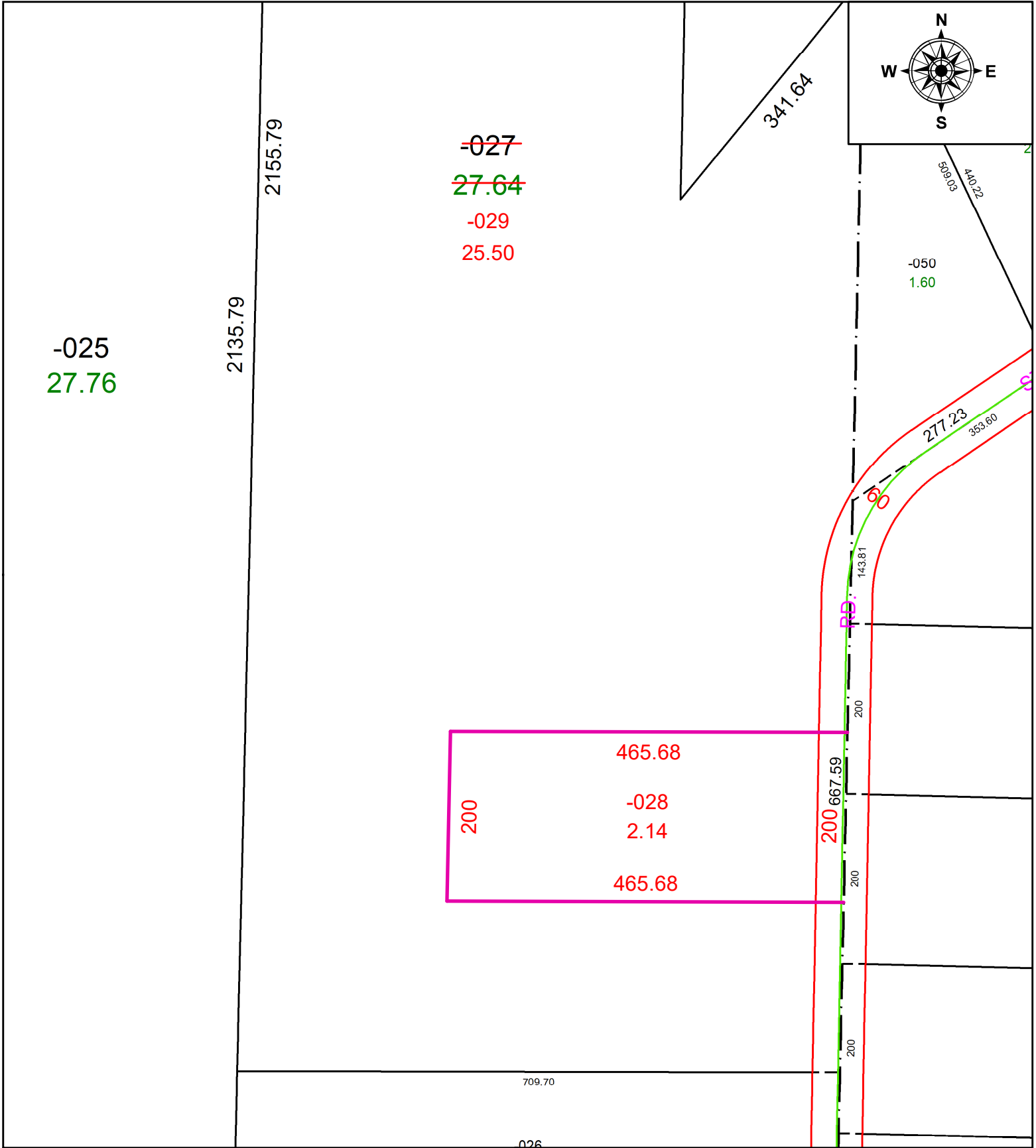


PARENT PARCEL: 12-00-087-000-027

CHILD PARCEL: 12-00-087-000-028 & -029

STARTING POINT: C/L OF CAPEL AND STATION RD

24-04819



SPLITS/DEEDS PROCESSED
 LORAIN COUNTY TAX MAP DEPARTMENT
 226 MIDDLE AVE. ELYRIA, OH

SURVEYED BY: JOSEPH A. BURGOON **SURV # 51123**
CLOSURE: 1: INF
MAP PAGE(S): 12-00-087
APPROVED BY: AC **DATE:** February 14, 2024
SCALE: 1 in = 150 ft **PRIOR INSTRUMENT:** 2019- 0726421