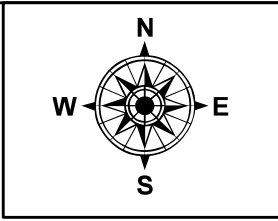
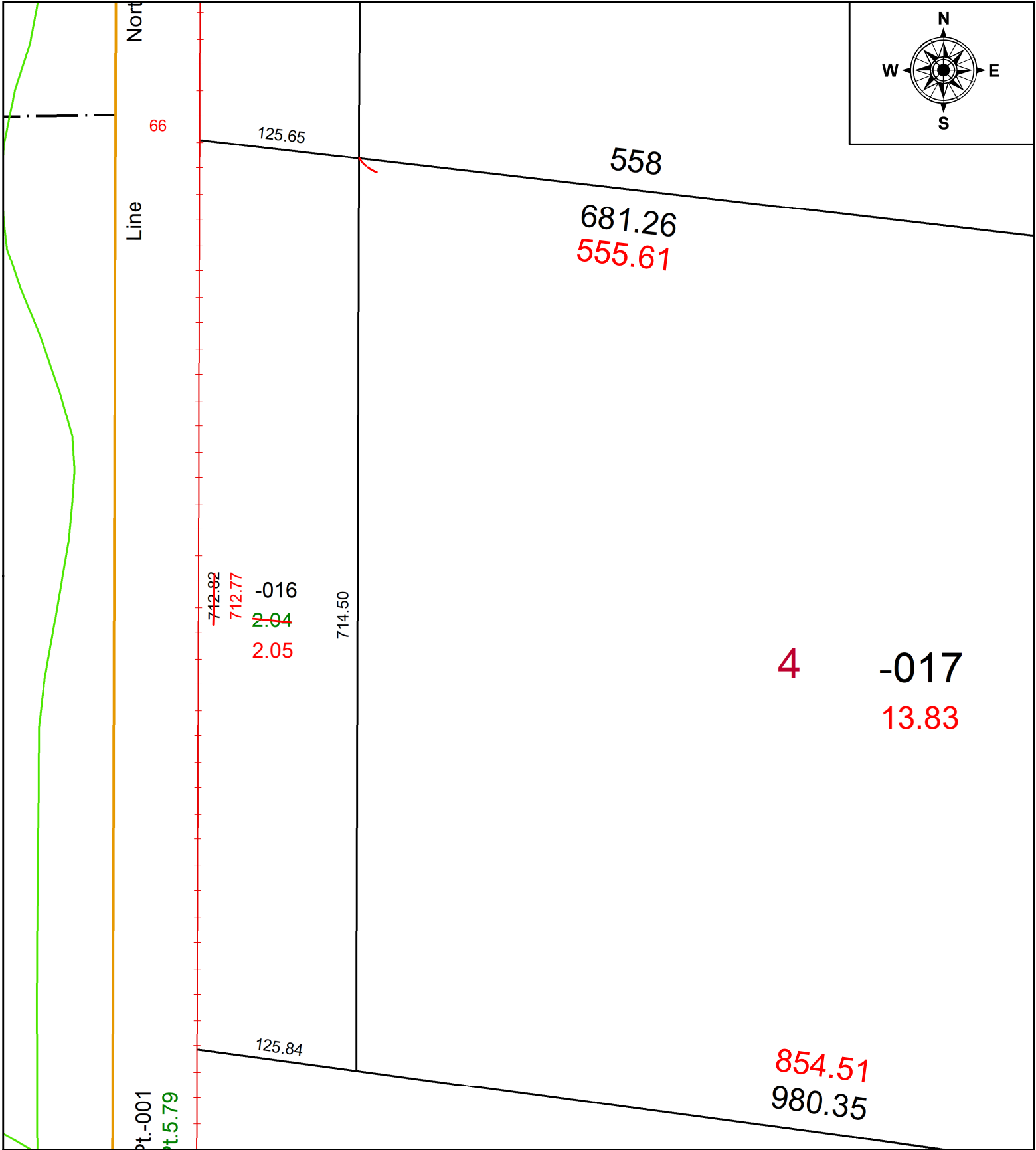


PARENT PARCEL: 07-00-043-101-016

CHILD PARCEL: **AC CORR PER PRIOR DEED VOL 1263 PG 259**

STARTING POINT: W LINE OF CASE RD AND NE CORNER OF S/L 2

22-04818-A



**SPLITS/DEEDS PROCESSED**  
 LORAIN COUNTY TAX MAP DEPARTMENT  
 226 MIDDLE AVE. ELYRIA, OH

SURVEYED BY: \_\_\_\_\_ N/A  
 CLOSURE: \_\_\_\_\_ 1: 498941  
 MAP PAGE(S): \_\_\_\_\_ 05-00-045  
 APPROVED BY: \_\_\_\_\_ AC DATE: \_\_\_\_\_ 3/17/2022  
 SCALE: \_\_\_\_\_ 1" = 100 \_\_\_\_\_ PRIOR INSTRUMENT: \_\_\_\_\_ VOL 1263 PG 259