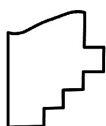
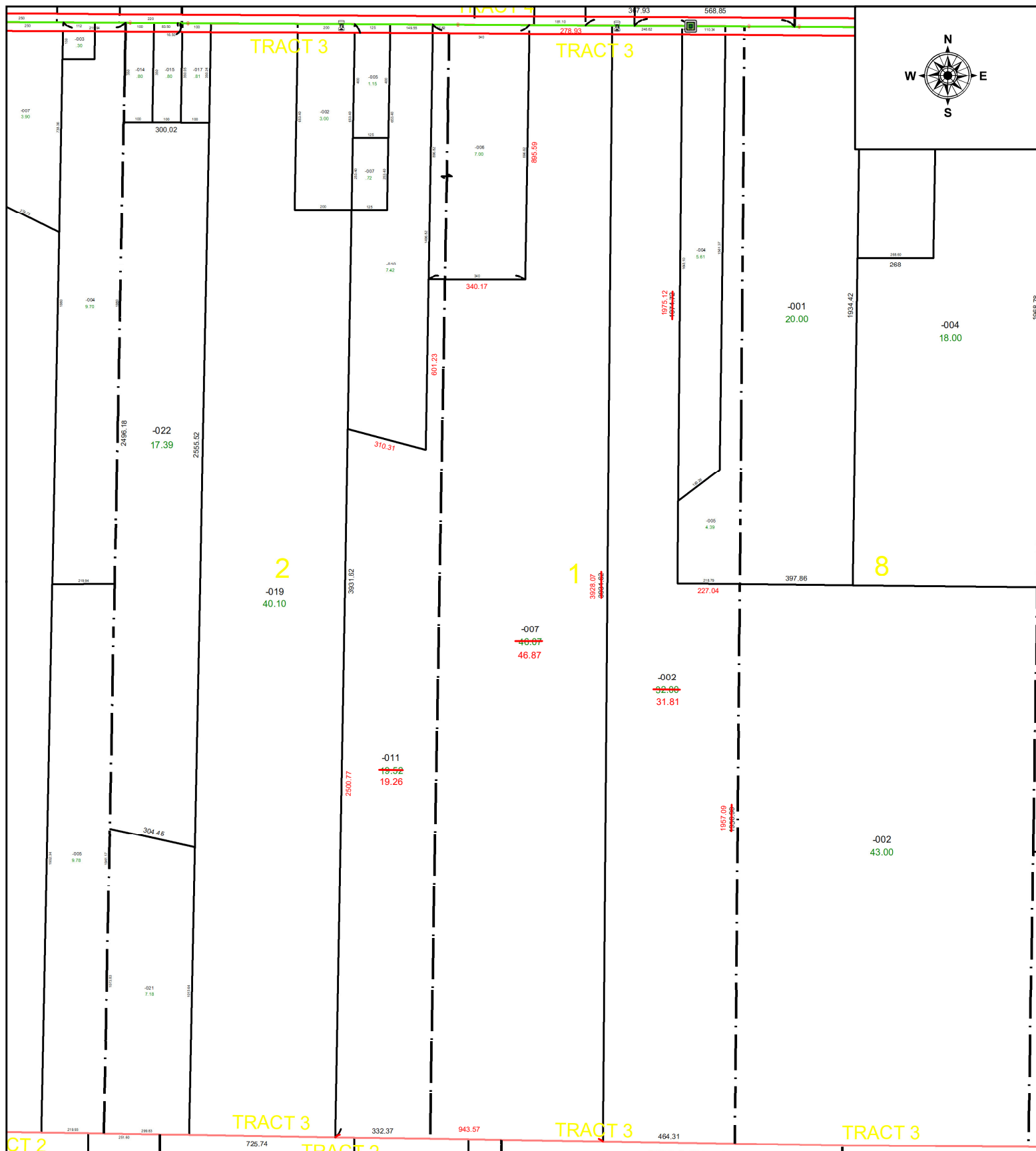


PARENT PARCEL: 19-03-001-000-002, -007, & 19-03-002-000-011

CHILD PARCEL: N/A

STARTING POINT: ACREAGE CORRECTION PER SURVEYOR TIMOTHY D. HOZALSKI

22-04816-A



**SPLITS/DEEDS PROCESSED**  
 LORAIN COUNTY TAX MAP DEPARTMENT  
 226 MIDDLE AVE. ELYRIA, OH

SURVEYED BY: TIMOTHY D. HOZALSKI

CLOSURE: 1: 1675609

MAP PAGE(S): 19-03-001

APPROVED BY: WRZ DATE: 3/17/2022

SCALE: 1" = 450 PRIOR INSTRUMENT: 2021-0849980