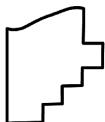
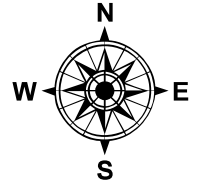
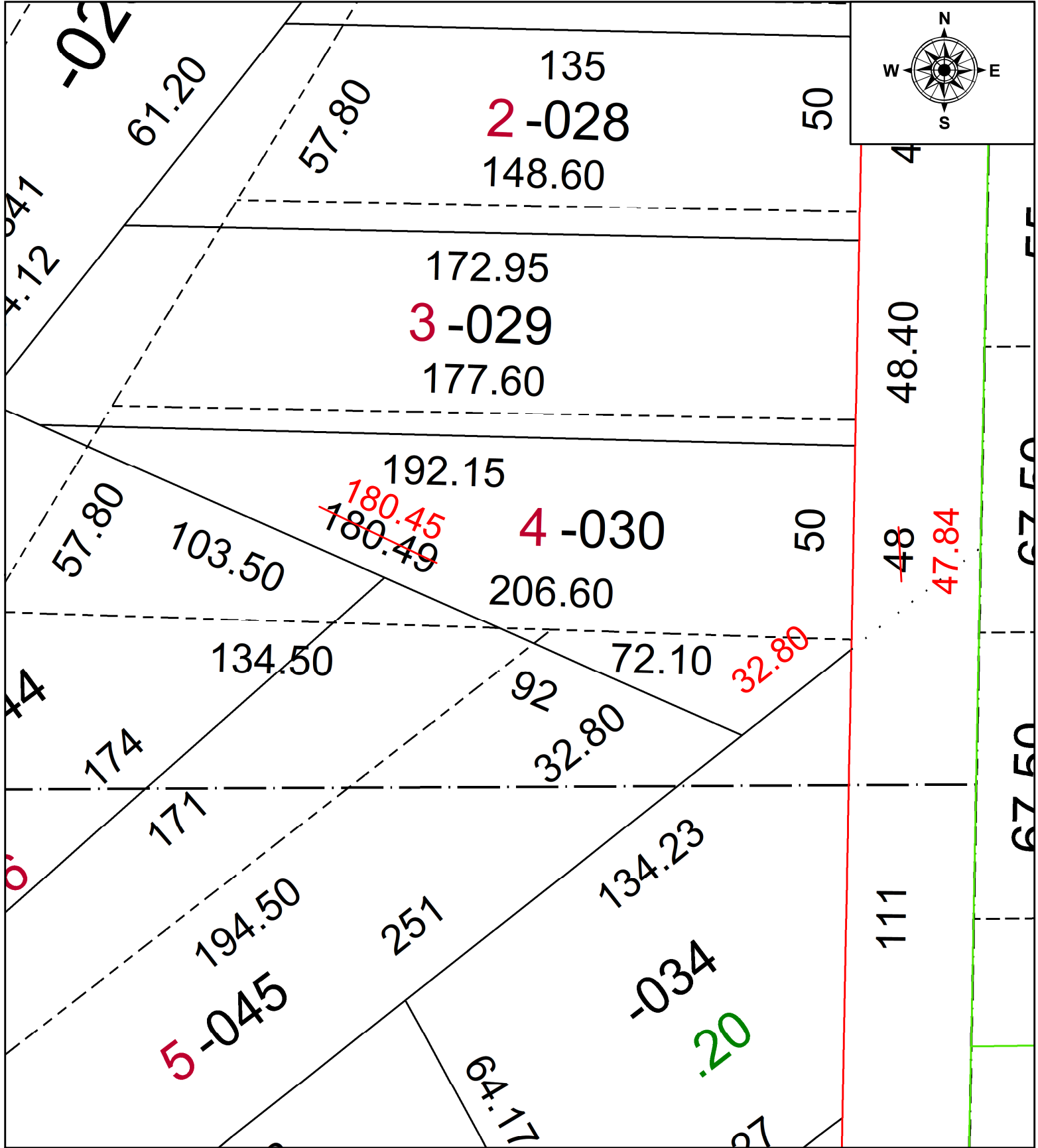


PARENT PARCEL: 16-00-011-111-030

CHILD PARCEL: **MAP CORRECTION ONLY**

STARTING POINT: SE CORNER OF S/L 4

22-04807-C



SPLITS/DEEDS PROCESSED
 LORAIN COUNTY TAX MAP DEPARTMENT
 226 MIDDLE AVE. ELYRIA, OH

SURVEYED BY: WILFREDO BARBOSA
 CLOSURE: 1: 80642
 MAP PAGE(S): 16-00-001
 APPROVED BY: AC DATE: 3/14/2022
 SCALE: 1" = 30 PRIOR INSTRUMENT: 2016- 0593276