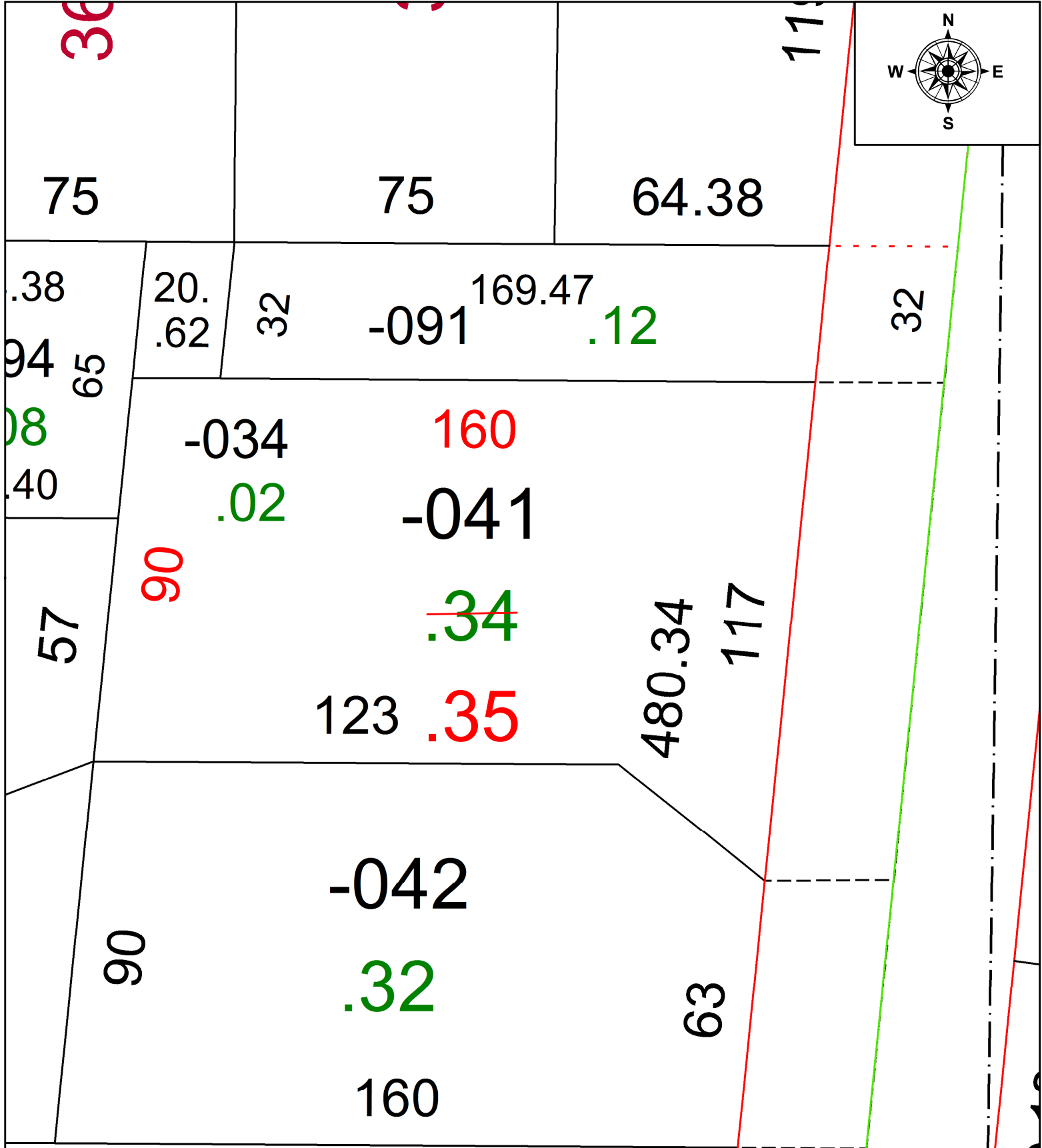


PARENT PARCEL: 05-00-005-101-041

CHILD PARCEL: **AC CORR PER PRIOR DEED**

STARTING POINT: NE CORNER OF O/L 5 AND C/L OF S LAKE ST

22-04804-A



**SPLITS/DEEDS PROCESSED**  
 LORAIN COUNTY TAX MAP DEPARTMENT  
 226 MIDDLE AVE. ELYRIA, OH

SURVEYED BY: \_\_\_\_\_ N/A  
 CLOSURE: \_\_\_\_\_ 1: 100789  
 MAP PAGE(S): \_\_\_\_\_ 05-00-005-B  
 APPROVED BY: \_\_\_\_\_ AC DATE: \_\_\_\_\_ 3/7/2022  
 SCALE: \_\_\_\_\_ 1" = 30 \_\_\_\_\_ PRIOR INSTRUMENT: \_\_\_\_\_ VOL 1124 PG 461