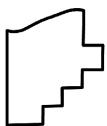
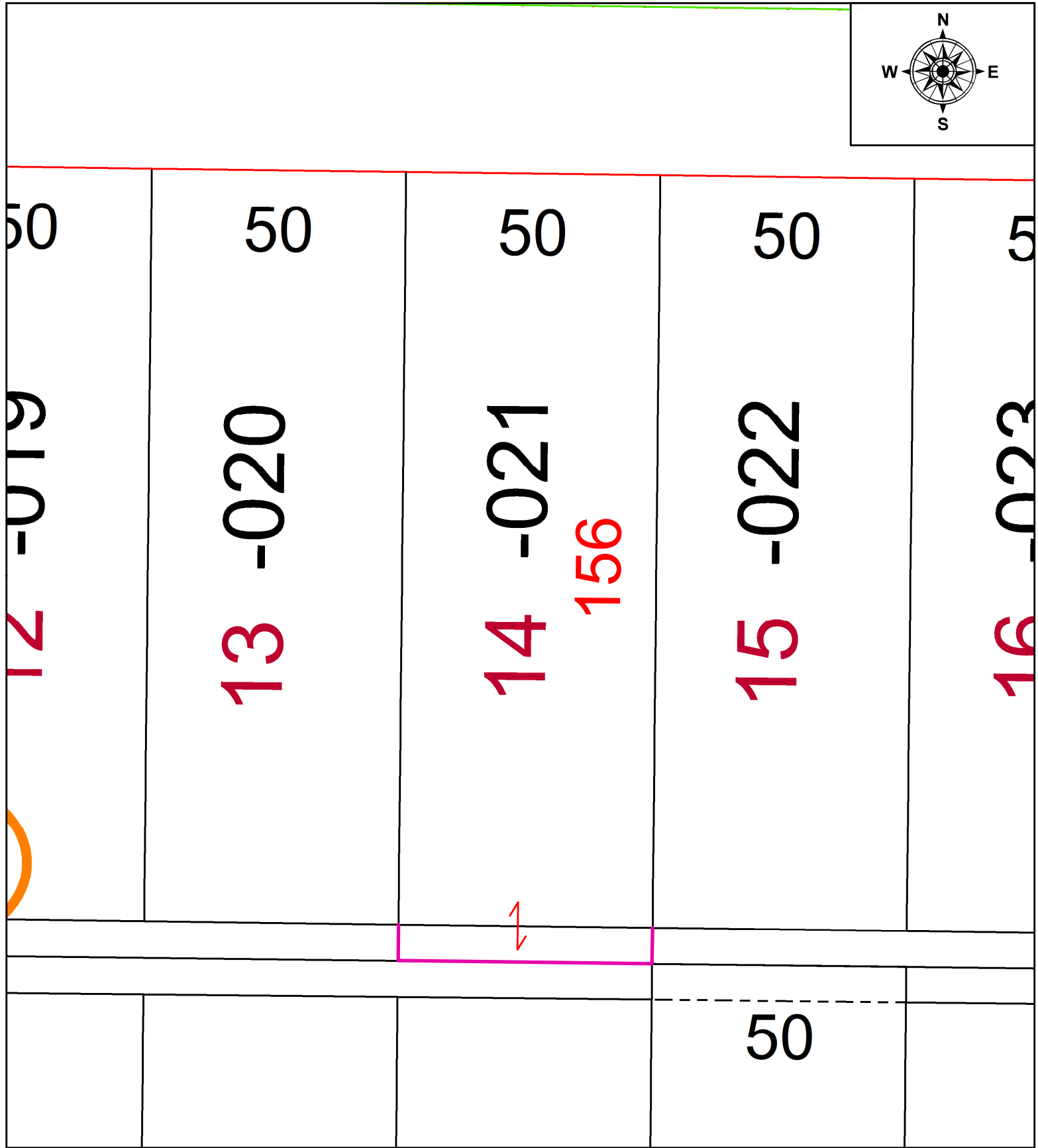
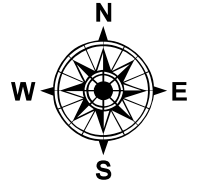


PARENT PARCEL: 02-01-006-130-021

CHILD PARCEL: DEPTH CORR PER VAC ORD. 4368

STARTING POINT: N/A

22-04802-C



**SPLITS/DEEDS PROCESSED**  
 LORAIN COUNTY TAX MAP DEPARTMENT  
 226 MIDDLE AVE. ELYRIA, OH

SURVEYED BY: N/A  
 CLOSURE: N/A  
 MAP PAGE(S): 02-01-006-D  
 APPROVED BY: AC DATE: 3/4/2022  
 SCALE: 1" = 25' PRIOR INSTRUMENT: 2009- 0289049