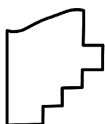
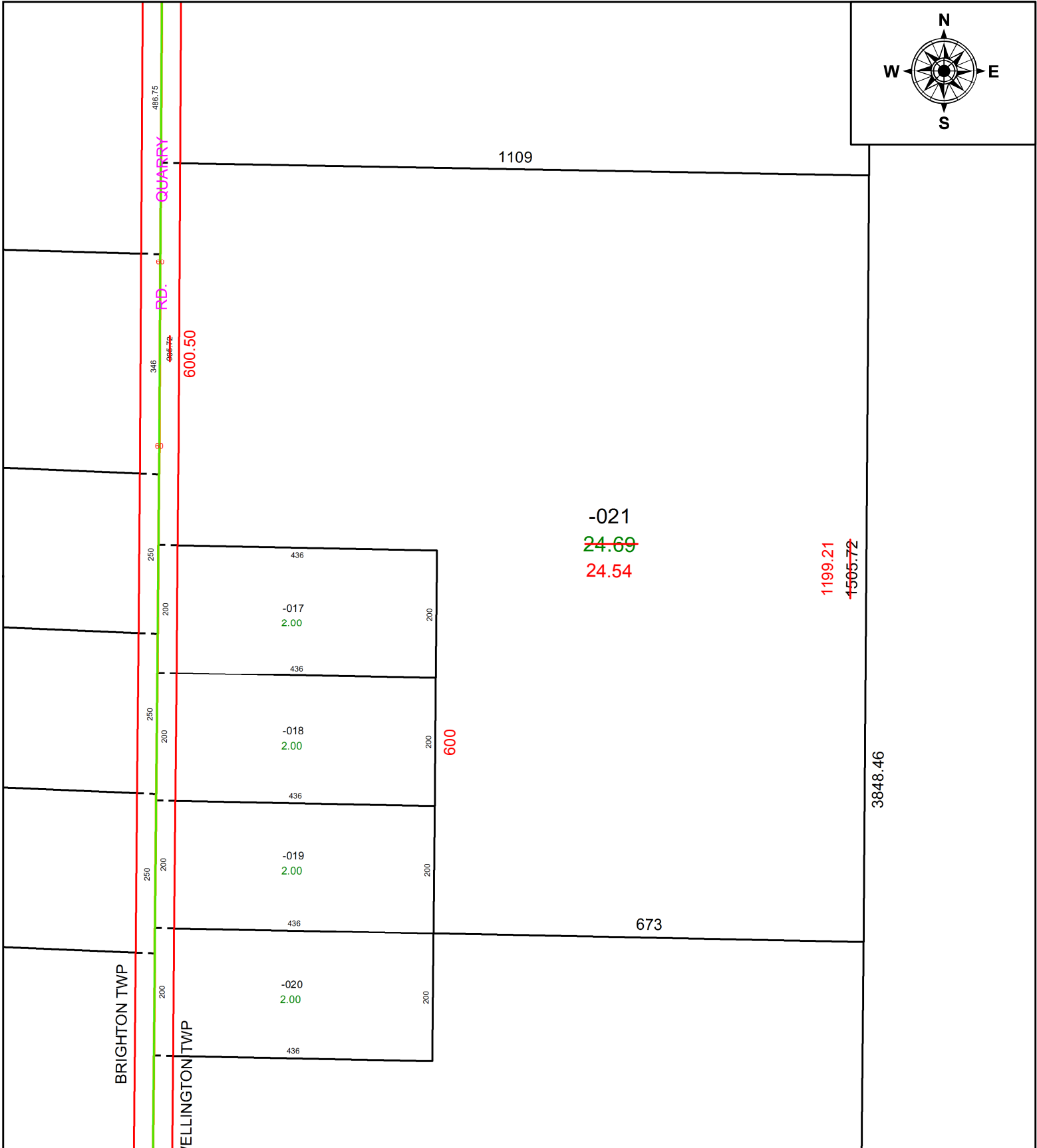


PARENT PARCEL: 18-00-046-000-021

CHILD PARCEL: **AC CORR PER SURV BY THOMAS M. SNEZEK**

STARTING POINT: C/L OF MEDINA-NORWALK AND QUARRY RD

22-04800-A



SPLITS/DEEDS PROCESSED
 LORAIN COUNTY TAX MAP DEPARTMENT
 226 MIDDLE AVE. ELYRIA, OH

SURVEYED BY: THOMAS M. SNEZEK
 CLOSURE: 1: 315382
 MAP PAGE(S): 18-00-046
 APPROVED BY: AC DATE: 3/2/2022
 SCALE: 1" = 200 PRIOR INSTRUMENT: VOL 1415, PG 741