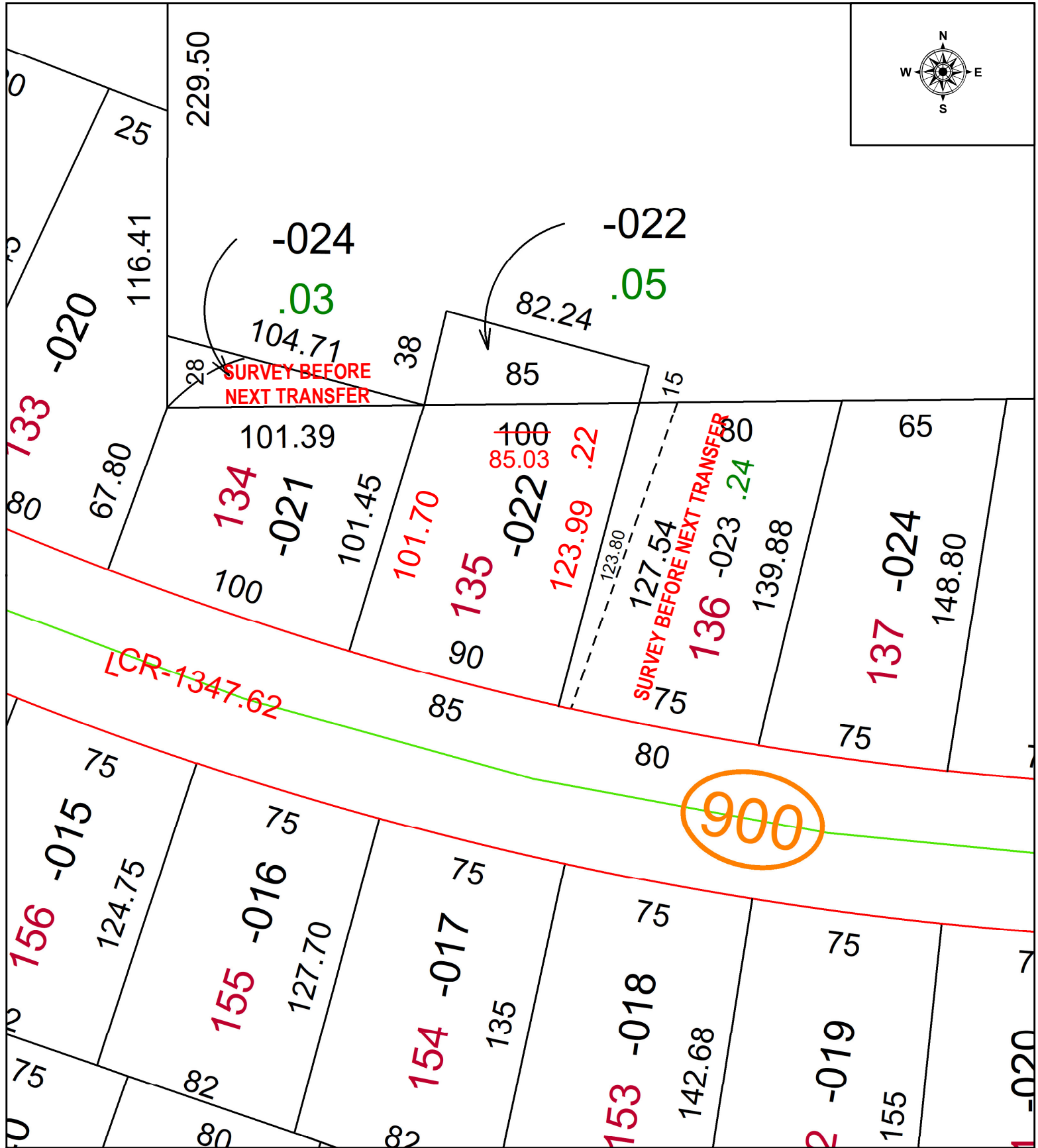
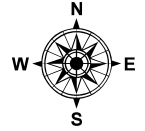


PARENT PARCEL: 06-25-030-102-022

CHILD PARCEL: N/A FRONTAGE & DEPTH CORRECTION

STARTING POINT: SOUTHEASTERLY CORNER OF S/L 134

22-04792-A



SPLITS/DEEDS PROCESSED
LORAIN COUNTY TAX MAP DEPARTMENT
226 MIDDLE AVE. ELYRIA, OH

SURVEYED BY: THOMAS A. SIMON
CLOSURE: 1: 49603
MAP PAGE(S): 06-25-030
APPROVED BY: WRZ DATE: 2/18/2022
SCALE: 1" = 50 PRIOR INSTRUMENT: 2021-0816364