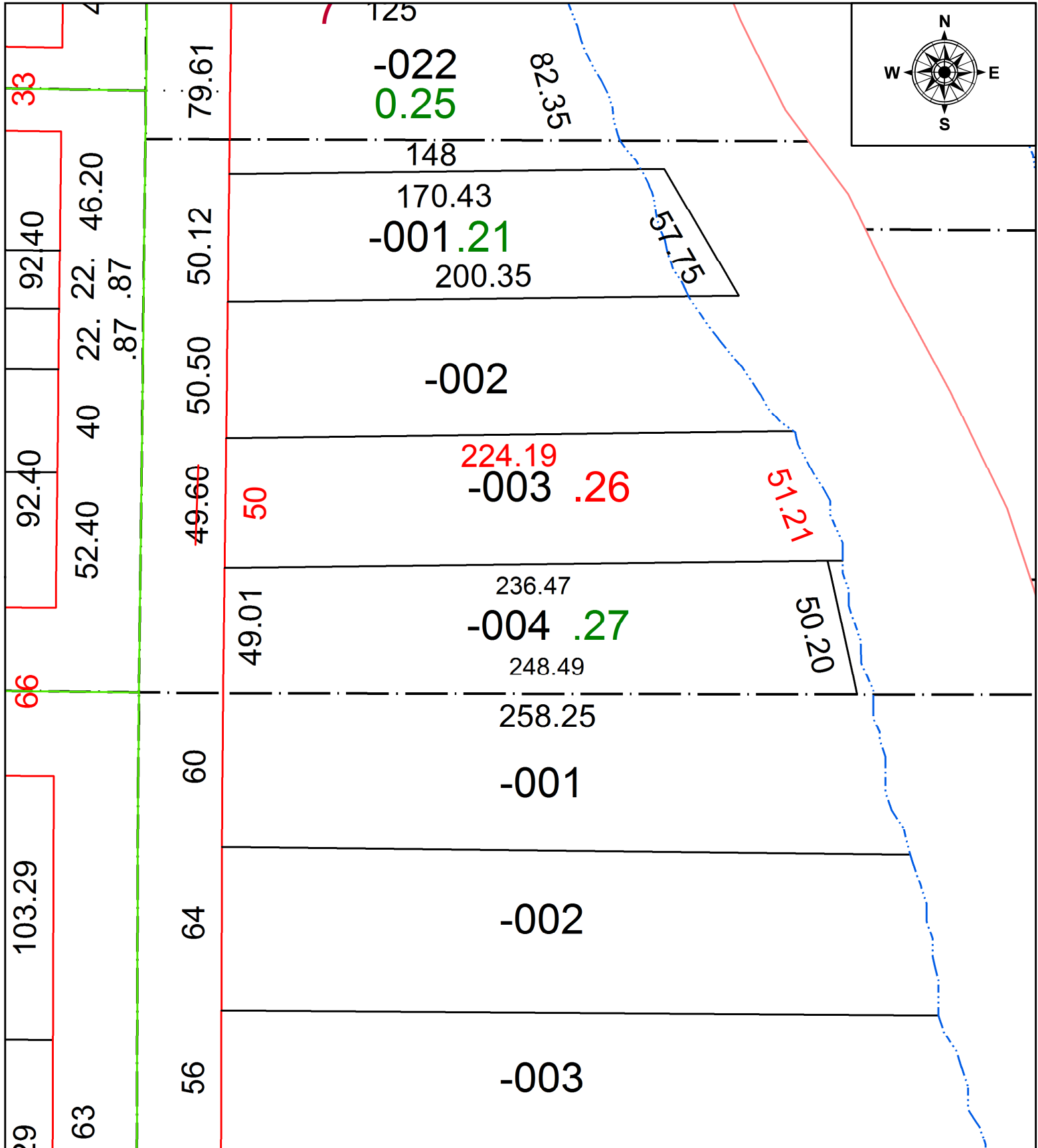


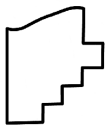
PARENT PARCEL: 06-26-037-000-003

CHILD PARCEL: **FRONT & DEPTH TO AC CORR PER SURV BY THOMAS A. SIMON**

STARTING POINT: SW CORNER OF O/L 37 AND EAST LINE OF EAST AVE

22-04788-A



 **SPLITS/DEEDS PROCESSED**
 LORAIN COUNTY TAX MAP DEPARTMENT
 226 MIDDLE AVE. ELYRIA, OH

SURVEYED BY: THOMAS A. SIMON
 CLOSURE: 1: 57154
 MAP PAGE(S): 06-26-037
 APPROVED BY: AC DATE: 2/11/2022
 SCALE: 1" = 50 PRIOR INSTRUMENT: 2004- 0981299