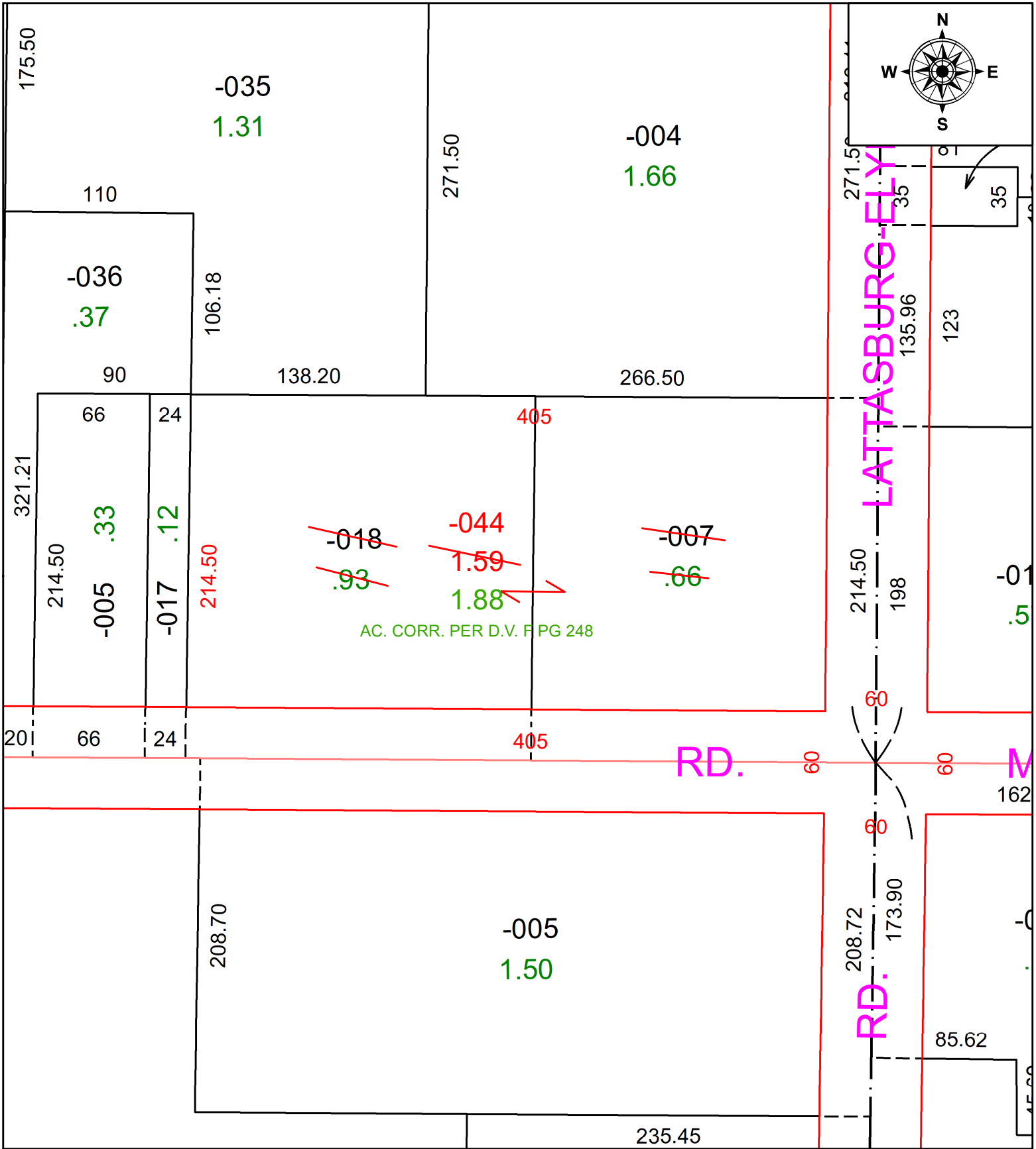


PARENT PARCEL: 19-04-001-000-007 & -018

CHILD PARCEL: 19-04-001-000-044 COMB. PER D.V. F PG. 248

STARTING POINT: N/A

23-04779



SPLITS/DEEDS PROCESSED
 LORAIN COUNTY TAX MAP DEPARTMENT
 226 MIDDLE AVE. ELYRIA, OH

SURVEYED BY: N/A SURVEY #: N/A
 CLOSURE: N/A
 MAP PAGE(S): 19-04-001
 APPROVED BY: DMA DATE: 11/9/2023
 SCALE: 1" = 75' PRIOR INSTRUMENT: VOL. F PG. 248