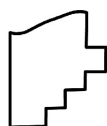
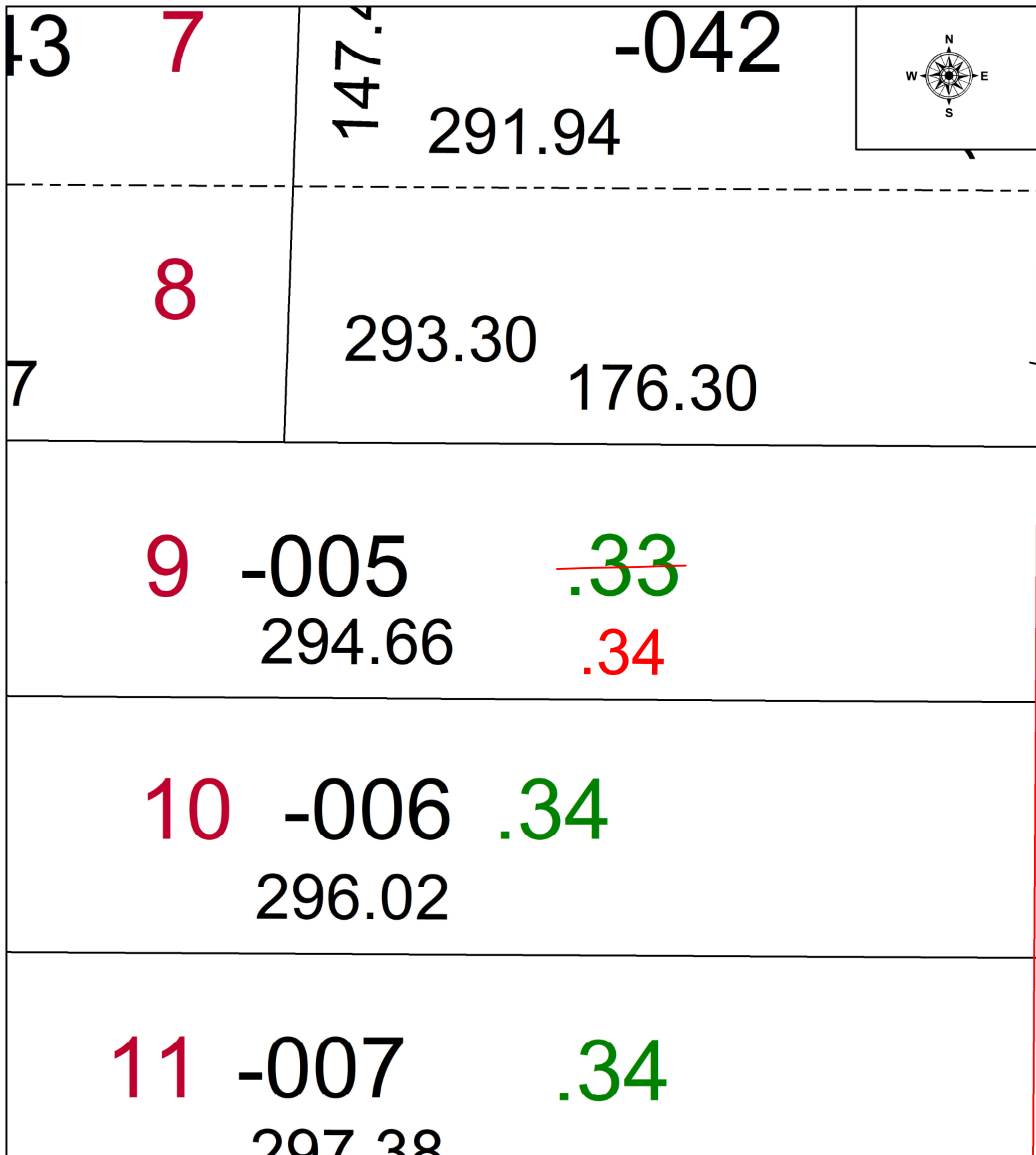


PARENT PARCEL: 04-00-019-128-005

CHILD PARCEL: N/A

STARTING POINT: ACREAGE CORRECTION PER PRIOR DEED

22-04776-C



SPLITS/DEEDS PROCESSED
LORAIN COUNTY TAX MAP DEPARTMENT
226 MIDDLE AVE. ELYRIA, OH

SURVEYED BY: N/A
CLOSURE: N/A
MAP PAGE(S): 04-00-019
APPROVED BY: WRZ DATE: 1/25/2022
SCALE: 1" = 25' PRIOR INSTRUMENT: 1994-0038464