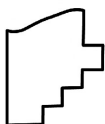
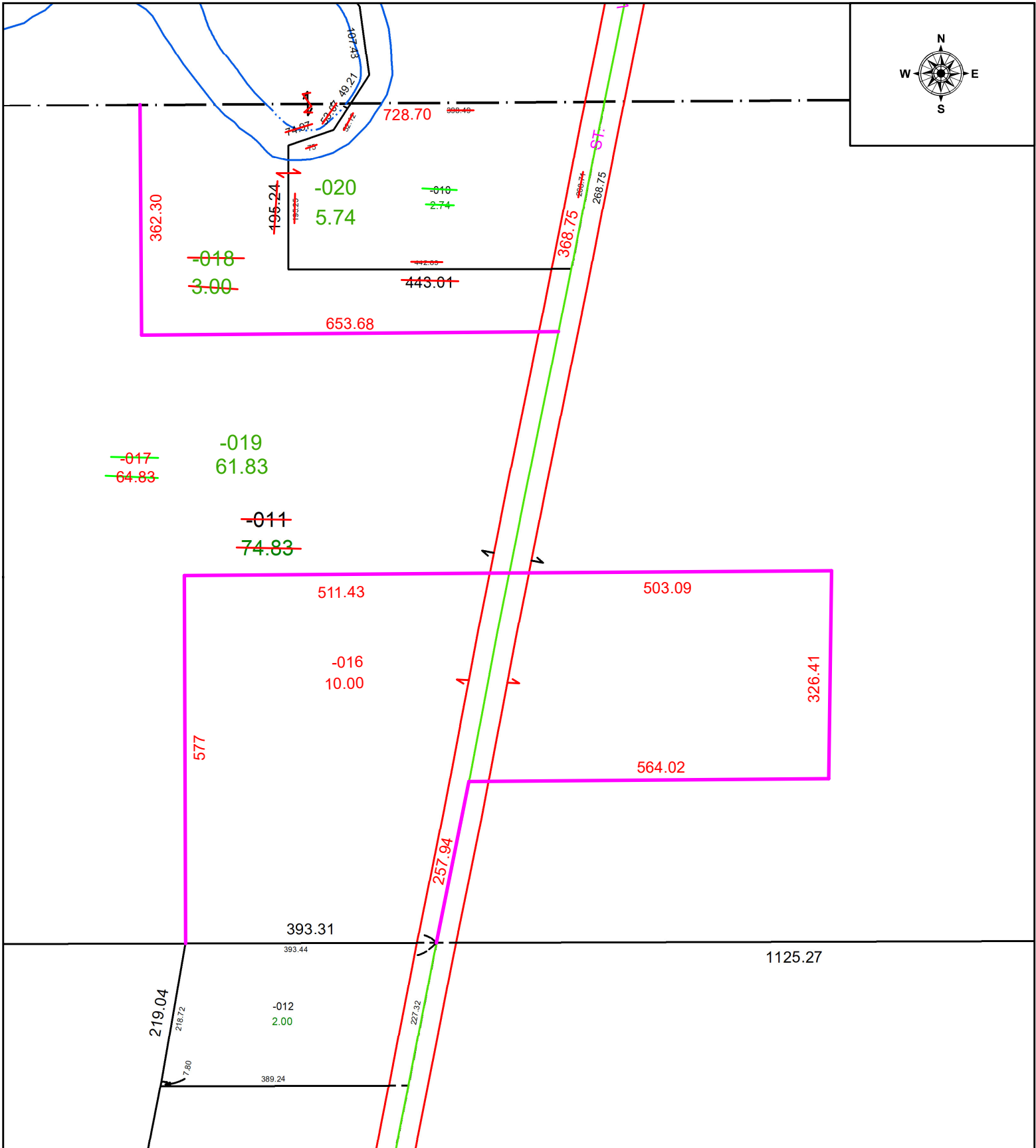
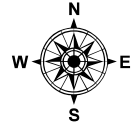


PARENT PARCEL: 15-00-071-000-010 & -011

CHILD PARCEL: 15-00-071-000-016 THRU -020

23-04774

STARTING POINT: MONUMENT BOX @ INTERSECTION OF C/L OF VERMONT ST & NORTH LINE OF O.L. 71



**SPLITS/DEEDS PROCESSED**  
LORAIN COUNTY TAX MAP DEPARTMENT  
226 MIDDLE AVE. ELYRIA, OH

SURVEYED BY:	JOSHUA RIEDY	SURVEY #	51050
CLOSURE:	1: 270781		
MAP PAGE(S):	15-00-071		
APPROVED BY:	WRZ	DATE:	11/6/2023
SCALE:	1" = 200	PRIOR INSTRUMENT:	#2022-0899365