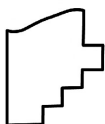
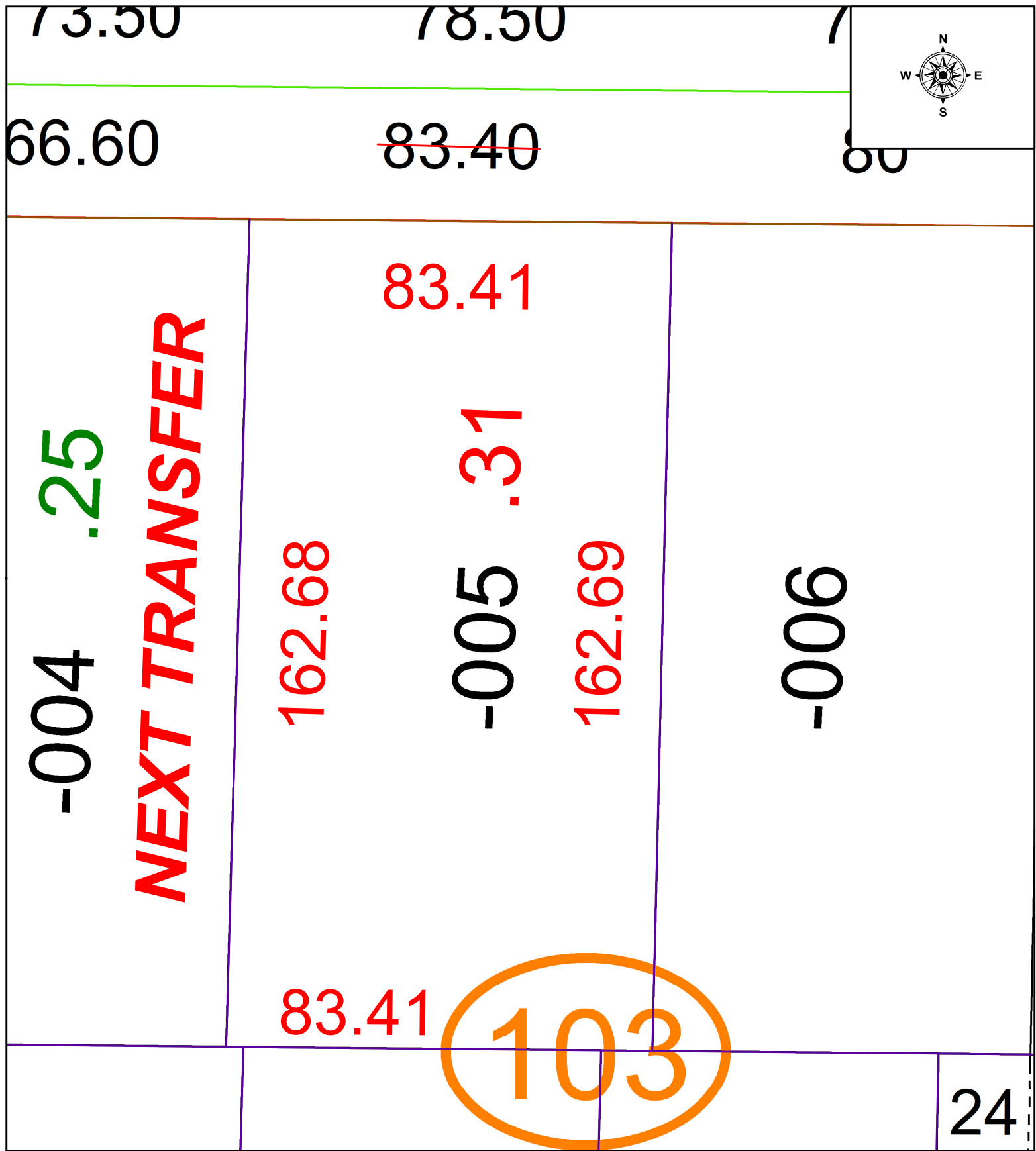


PARENT PARCEL: 09-00-085-103-005

CHILD PARCEL: N/A

STARTING POINT: NORTHWEST CORNER OF S/L 10 IN THOMPSON & WEBSTER'S SUBDIVISION

22-04770-C



SPLITS/DEEDS PROCESSED
 LORAIN COUNTY TAX MAP DEPARTMENT
 226 MIDDLE AVE. ELYRIA, OH

SURVEYED BY: RICHARD A. FREDRICKSON

CLOSURE: 1: 49218

MAP PAGE(S): 09-00-085

APPROVED BY: WRZ DATE: 1/13/2022

SCALE: 1" = 25

PRIOR INSTRUMENT: 2016-0606783