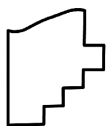
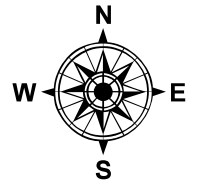
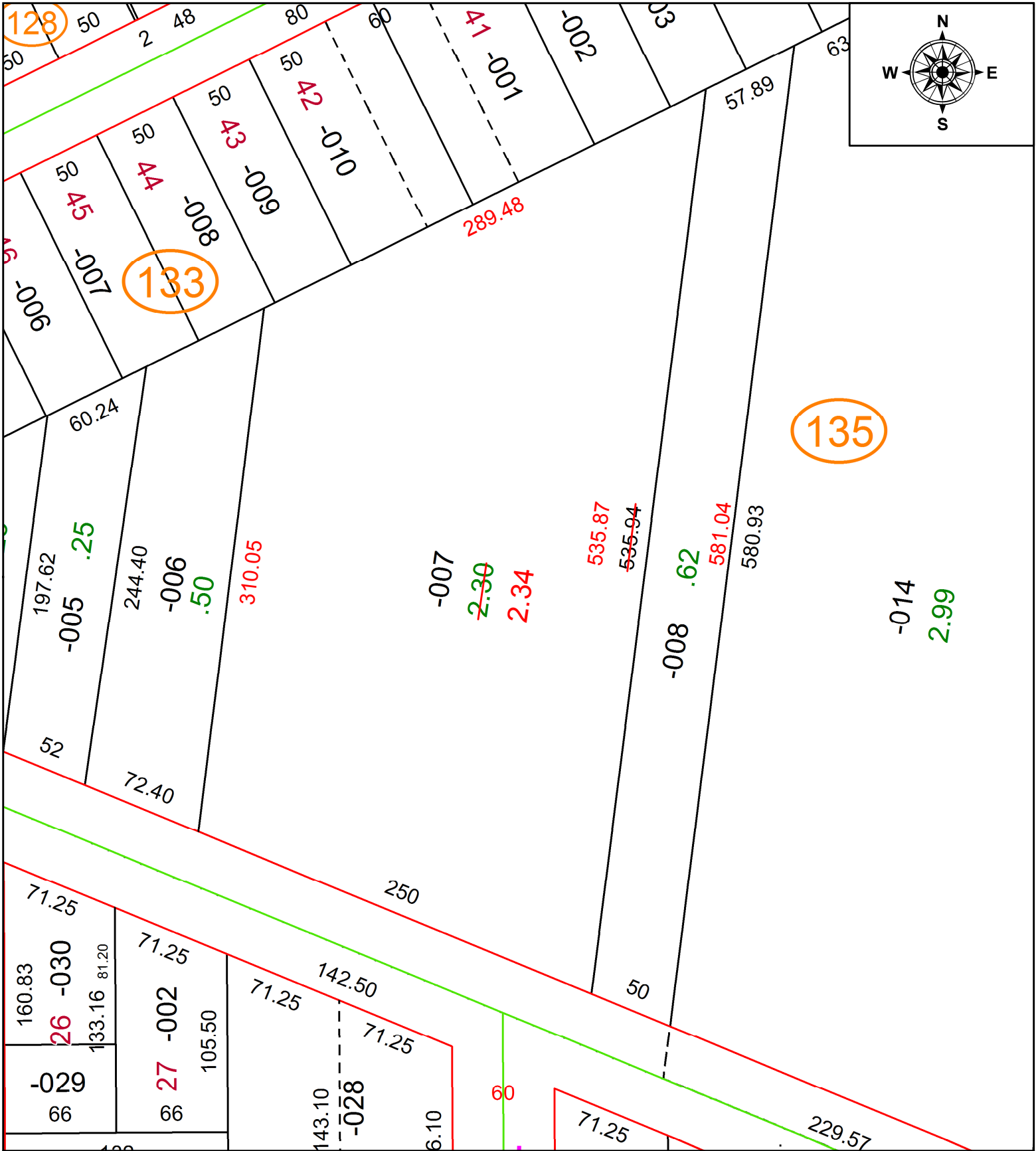


PARENT PARCEL: 02-00-051-135-007, -008

CHILD PARCEL: **AC CORR PER SURV BY JAMES P YURKSCHATT**

22-04765-C

STARTING POINT: W LINE OF IOWA AVE AND N LINE OF COLORADO AVE



SPLITS/DEEDS PROCESSED
 LORAIN COUNTY TAX MAP DEPARTMENT
 226 MIDDLE AVE. ELYRIA, OH

SURVEYED BY: JAMES P. YURKSCHATT
 CLOSURE: 1: 346809
 MAP PAGE(S): 02-00-051-B
 APPROVED BY: AC DATE: 1/10/2022
 SCALE: 1" = 75' PRIOR INSTRUMENT: 1998-0516656