

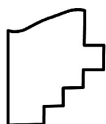
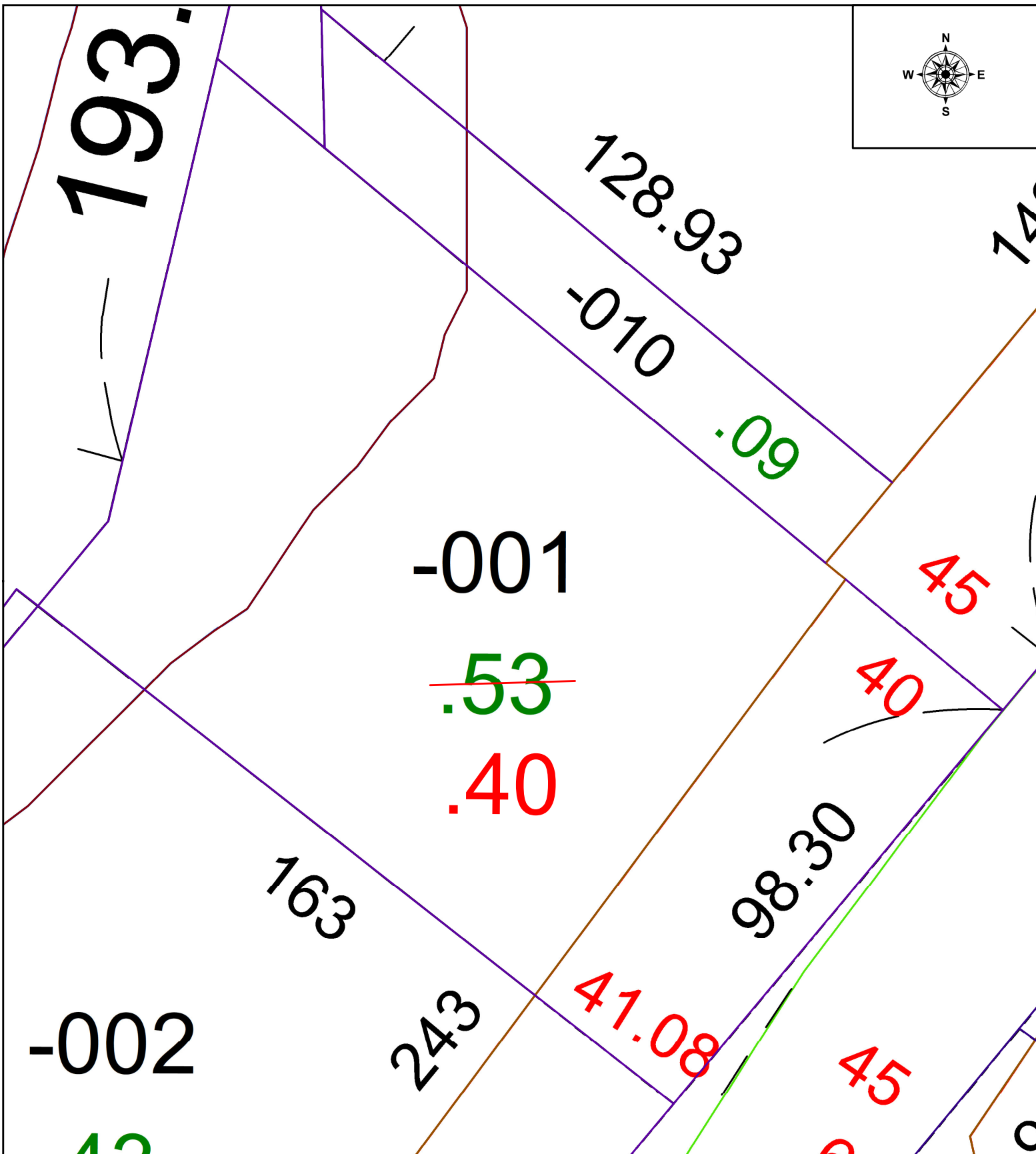
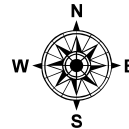
PARENT PARCEL: 10-00-003-123-001

CHILD PARCEL: N/A

ACREAGE CORRECTION PER PRIOR DEED

STARTING POINT: N/A

22-04764-C



SPLITS/DEEDS PROCESSED

LORAIN COUNTY TAX MAP DEPARTMENT
226 MIDDLE AVE. ELYRIA, OH

SURVEYED BY: J.W. WARDEN

CLOSURE: N/A

MAP PAGE(S): 10-00-003

APPROVED BY: WRZ DATE: 1/10/2022

SCALE: 1" = 25 PRIOR INSTRUMENT: DV 305 111