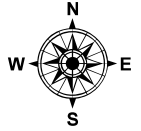


PARENT PARCEL: 07-00-042-115-152

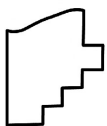
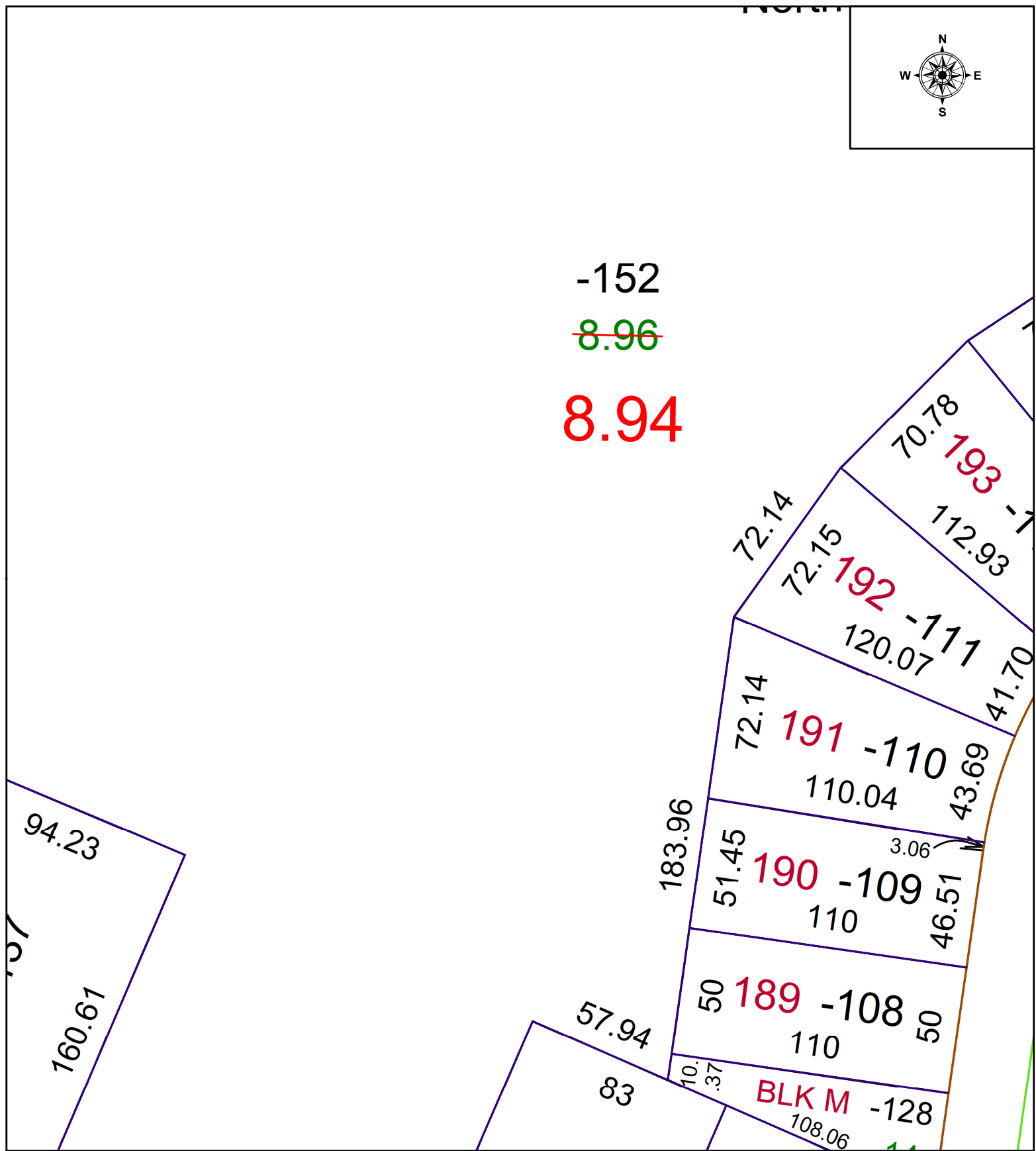
CHILD PARCEL: N/A

STARTING POINT: ACREAGE CORRECTION PER ATWELL LLC

22-04761-C



-152
~~8.96~~
8.94



SPLITS/DEEDS PROCESSED
LORAIN COUNTY TAX MAP DEPARTMENT
226 MIDDLE AVE. ELYRIA, OH

SURVEYED BY: ATWELL LLC
CLOSURE: N/A
MAP PAGE(S): 07-00-042
APPROVED BY: WRZ DATE: 1/3/2022
SCALE: 1" = 50 PRIOR INSTRUMENT: N/A