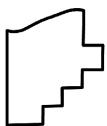
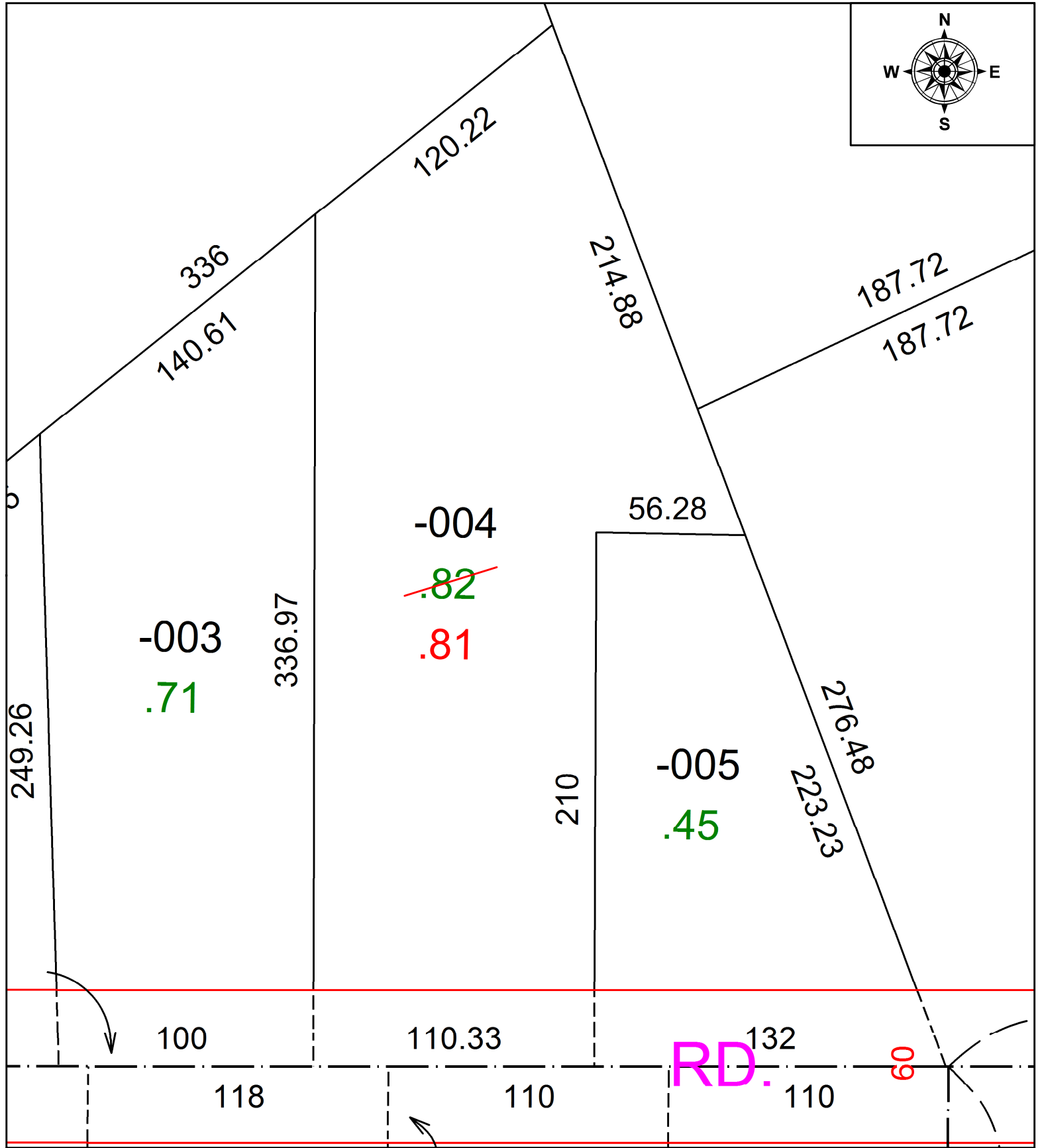


PARENT PARCEL: 02-01-007-102-004

CHILD PARCEL: **ACREAGE CORR. PER PRIOR INSTRUMENT # 2020-0757871**

STARTING POINT: N/A

22-04584-A



SPLITS/DEEDS PROCESSED
 LORAIN COUNTY TAX MAP DEPARTMENT
 226 MIDDLE AVE. ELYRIA, OH

SURVEYED BY: N/A
 CLOSURE: N/A
 MAP PAGE(S): 02-01-007
 APPROVED BY: DMA DATE: 1/3/2022
 SCALE: 1" = 50' PRIOR INSTRUMENT: 2020-0757871