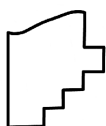
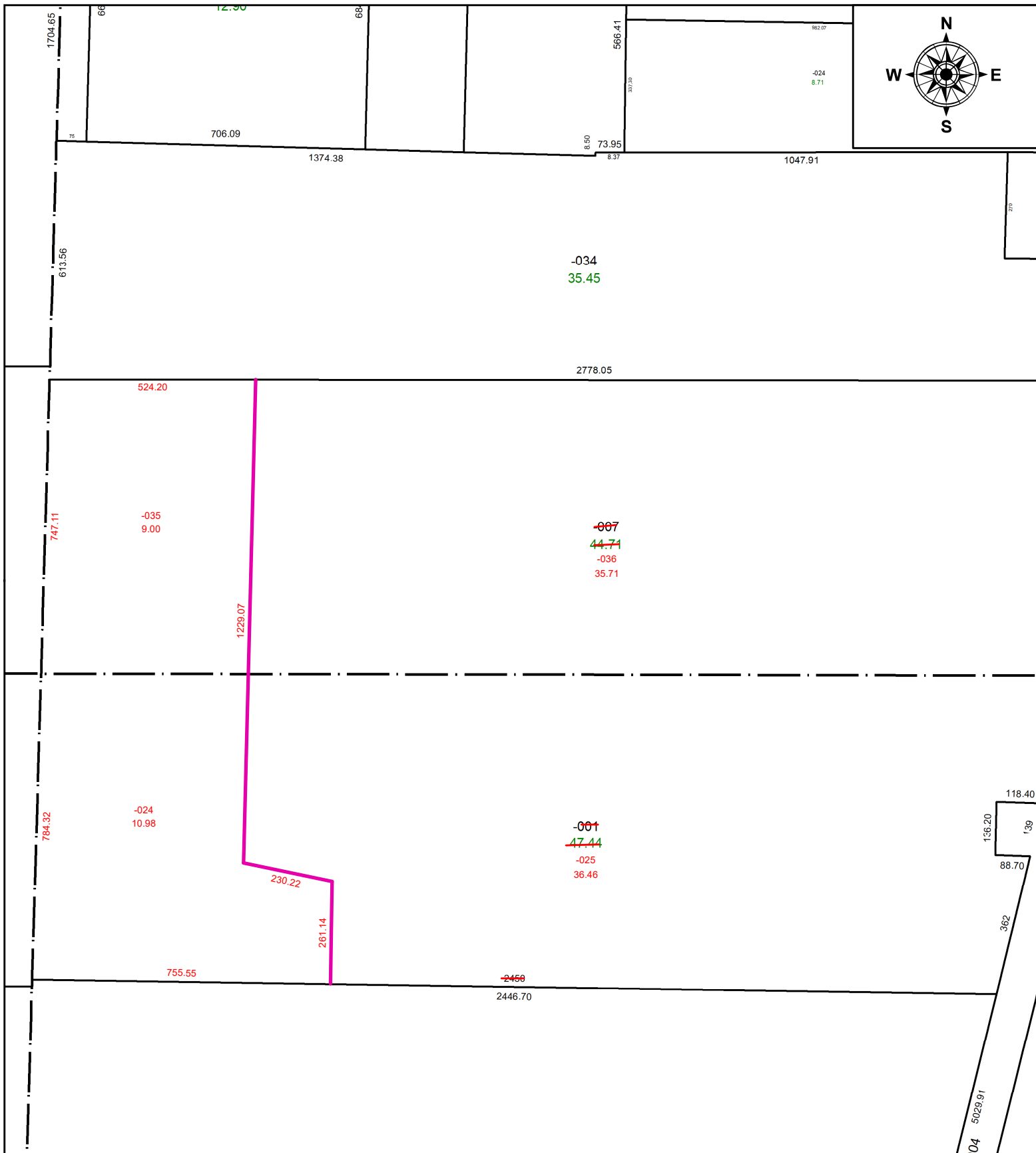


PARENT PARCEL: 09-00-053-000-007 & 09-00-063-000-001

CHILD PARCEL: **09-00-053-000-035, -036, 09-00-063-000-024, & -025**

STARTING POINT: SW CORNER OF O/L 53

23-04758



SPLITS/DEEDS PROCESSED
 LORAIN COUNTY TAX MAP DEPARTMENT
 226 MIDDLE AVE. ELYRIA, OH

SURVEYED BY: TIMOTHY D. HOZALSKI **SURV # 51021**
CLOSURE: 1: 427937
MAP PAGE(S): 09-00-053, -063
APPROVED BY: AC **DATE:** October 12, 2023
SCALE: 1 in = 325 ft **PRIOR INSTRUMENT:** 1998- 0555517