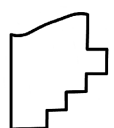
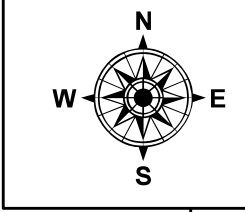
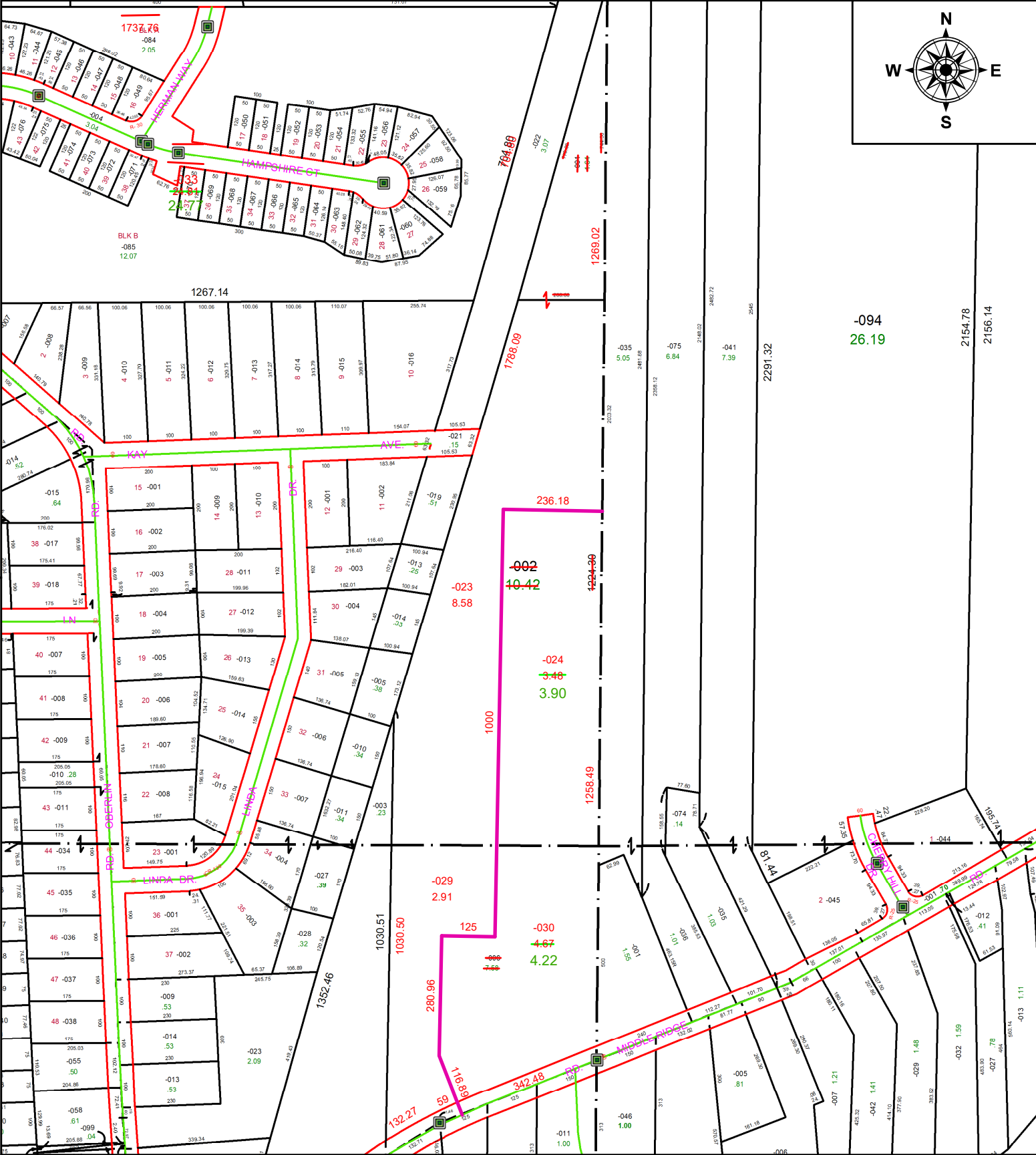


PARENT PARCEL: 05-00-062-105-001, -002, & 05-00-063-103-006
 CHILD PARCEL: 05-00-062-105-023, -024, 05-00-063-103-029, & -030
 STARTING POINT: **AC CORR PER SURV BY THOMAS A. SIMON**

23-04756



SPLITS/DEEDS PROCESSED
 LORAIN COUNTY TAX MAP DEPARTMENT
 226 MIDDLE AVE. ELYRIA, OH

SURVEYED BY: THOMAS A. SIMON **SURV # 51021**
CLOSURE: 1: 679885
MAP PAGE(S): 05-00-062, -063
APPROVED BY: AC **DATE:** October 05, 2023
SCALE: 1 in = 300 ft **PRIOR INSTRUMENT:** 2016- 0604317