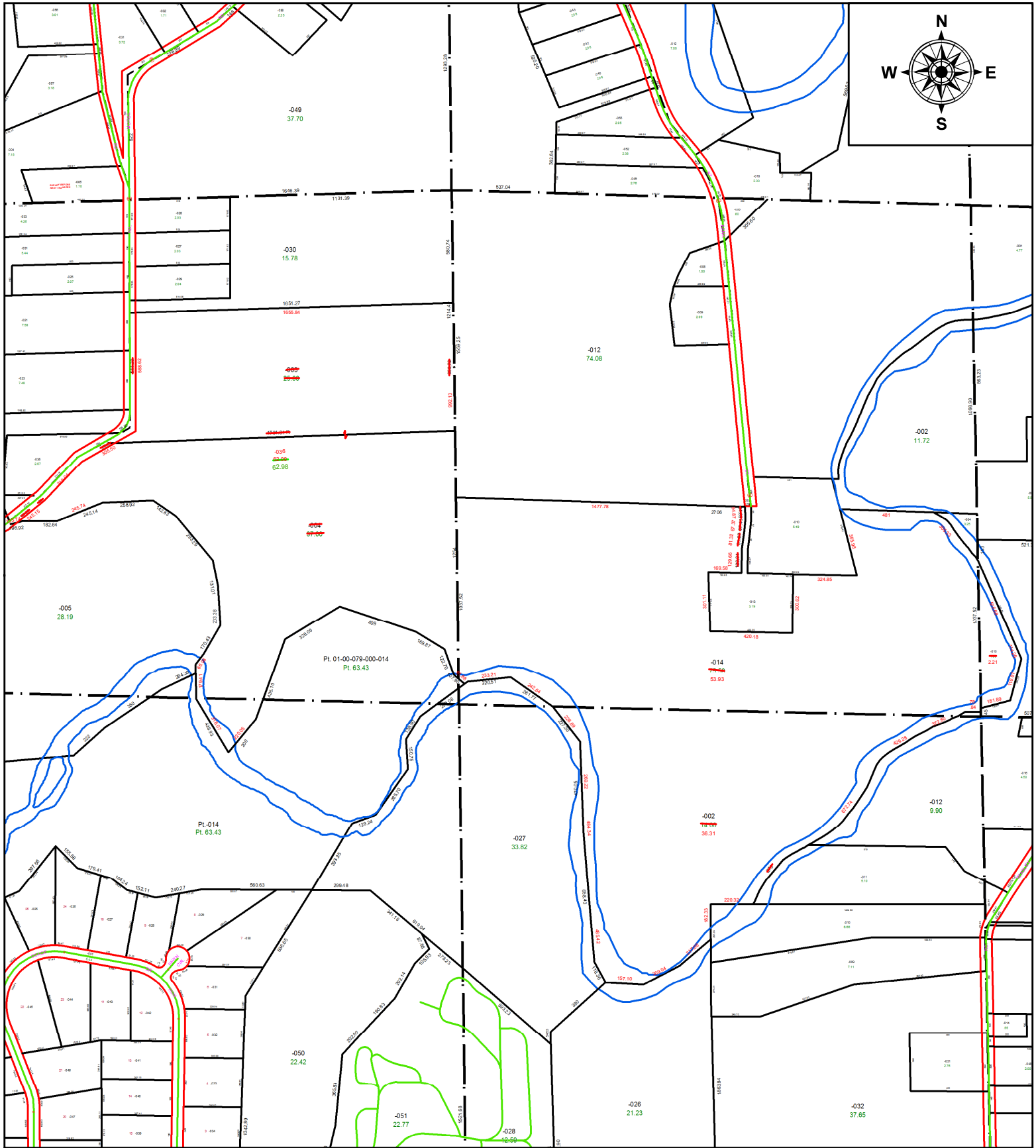


PARENT PARCEL: 01-00-066-000-003, -004, -067-000-014, 068-000-010, -078-000-002

CHILD PARCEL: 01-00-066-000-036, -067-000-014, 068-000-010, -078-000-002

21-04751-C

STARTING POINT: C/L OF GORE ORPHANAGE RD AND O/L 86 AC CORR PER SURV BY JOHN DECHANT JR.



SPLITS/DEEDS PROCESSED
 LORAIN COUNTY TAX MAP DEPARTMENT
 226 MIDDLE AVE. ELYRIA, OH

SURVEYED BY: JOHN A. DECHANT JR.

CLOSURE: 1: 551529

MAP PAGE(S): 01-00-066-B

APPROVED BY: AC DATE: 12/17/2021

SCALE: 1" = 650 PRIOR INSTRUMENT: 2005- 0109287