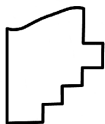
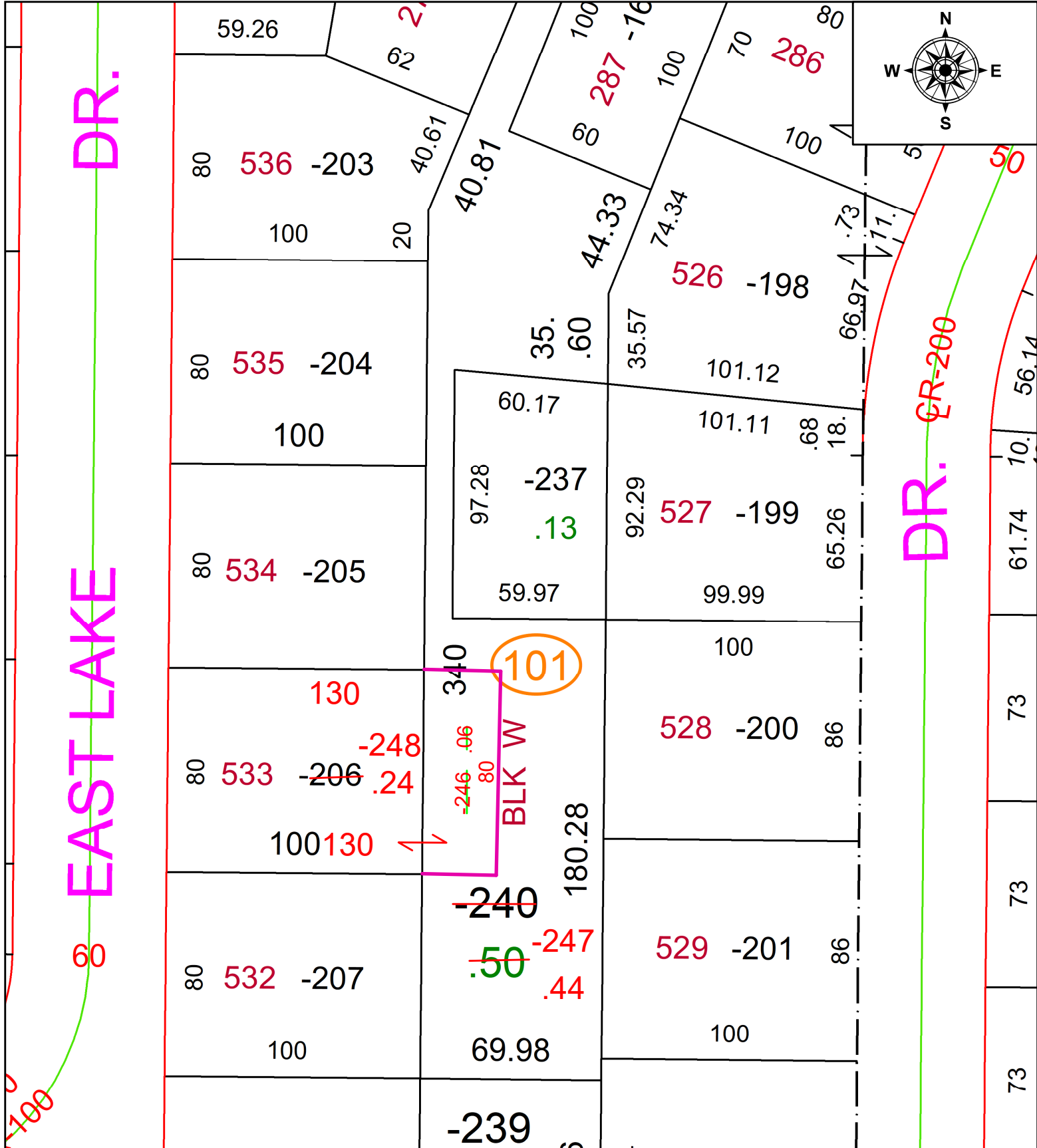


PARENT PARCEL: 15-00-099-101-206, -240
 CHILD PARCEL: 15-00-099-101-246, -247, & -248
 STARTING POINT: **AC CORR PER SURV BY THOMAS A. SIMON**

23-04750



SPLITS/DEEDS PROCESSED
 LORAIN COUNTY TAX MAP DEPARTMENT
 226 MIDDLE AVE. ELYRIA, OH

SURVEYED BY: THOMAS A. SIMON	SURV # 51013
CLOSURE: 1: 2147483648	
MAP PAGE(S): 15-00-099	
APPROVED BY: AC	DATE: September 14, 2023
SCALE: 1 in = 50 ft	PRIOR INSTRUMENT: 2019- 0734577