

PARENT PARCEL: 06-25-162-101-024

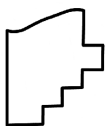
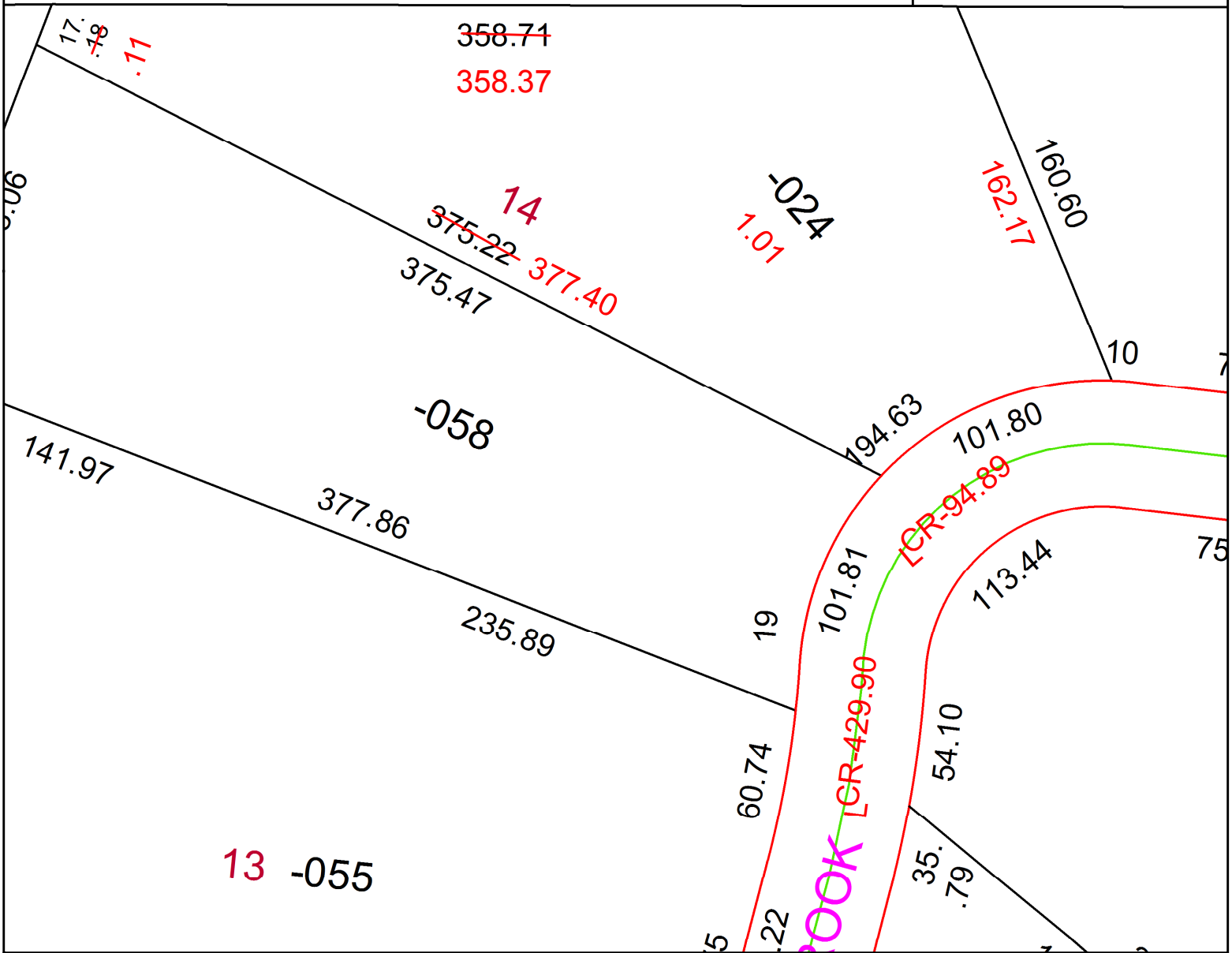
CHILD PARCEL: **FRONTAGE & DEPTH TO AC CORR PER SURV BY AMY M. KELLY**

STARTING POINT: NORTH LINE OF OVERBROOK RD AND SE CORNER OF S/L 14

21-04746-C



101



SPLITS/DEEDS PROCESSED
 LORAIN COUNTY TAX MAP DEPARTMENT
 226 MIDDLE AVE. ELYRIA, OH

SURVEYED BY: AMY M. KELLY
 CLOSURE: 1: 97266
 MAP PAGE(S): 06-25-162
 APPROVED BY: AC DATE: 12/15/2021
 SCALE: 1" = 60 PRIOR INSTRUMENT: 2017- 0633987