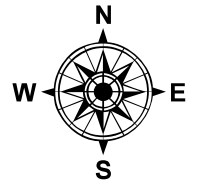
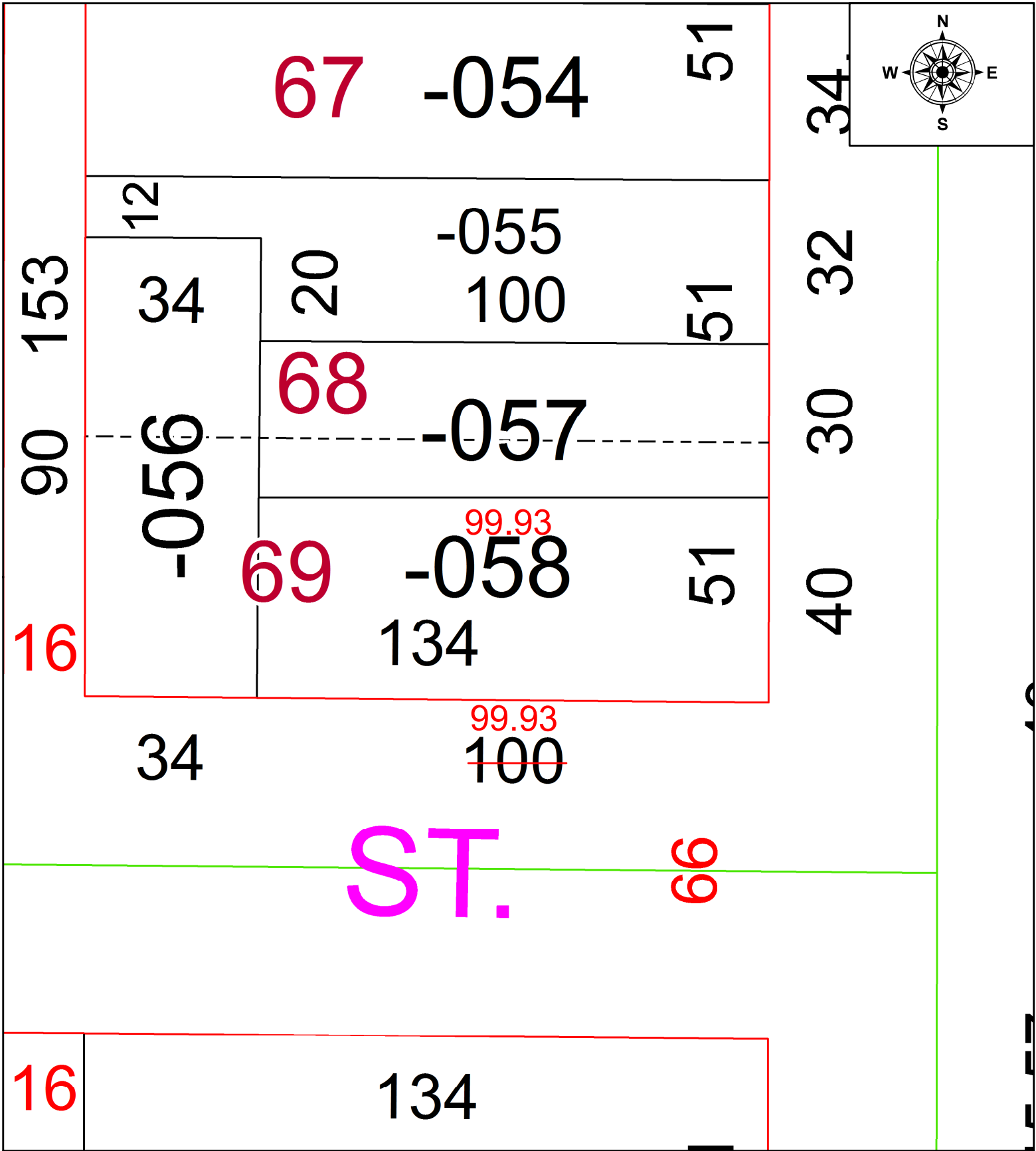


PARENT PARCEL: 02-01-006-135-058

CHILD PARCEL: **MAP CORRECTION ONLY**

STARTING POINT: MONUMENT BOX AT INTERSECTION OF W 20TH AND LONG ST

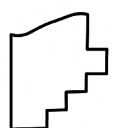
21-04744-C



ST. 66

16

134



SPLITS/DEEDS PROCESSED
 LORAIN COUNTY TAX MAP DEPARTMENT
 226 MIDDLE AVE. ELYRIA, OH

SURVEYED BY: SCOTT J. CASEY
 CLOSURE: 1: 2147483648
 MAP PAGE(S): 02-01-006
 APPROVED BY: AC DATE: 12/14/2021
 SCALE: 1" = 25 PRIOR INSTRUMENT: 2021- 0846189