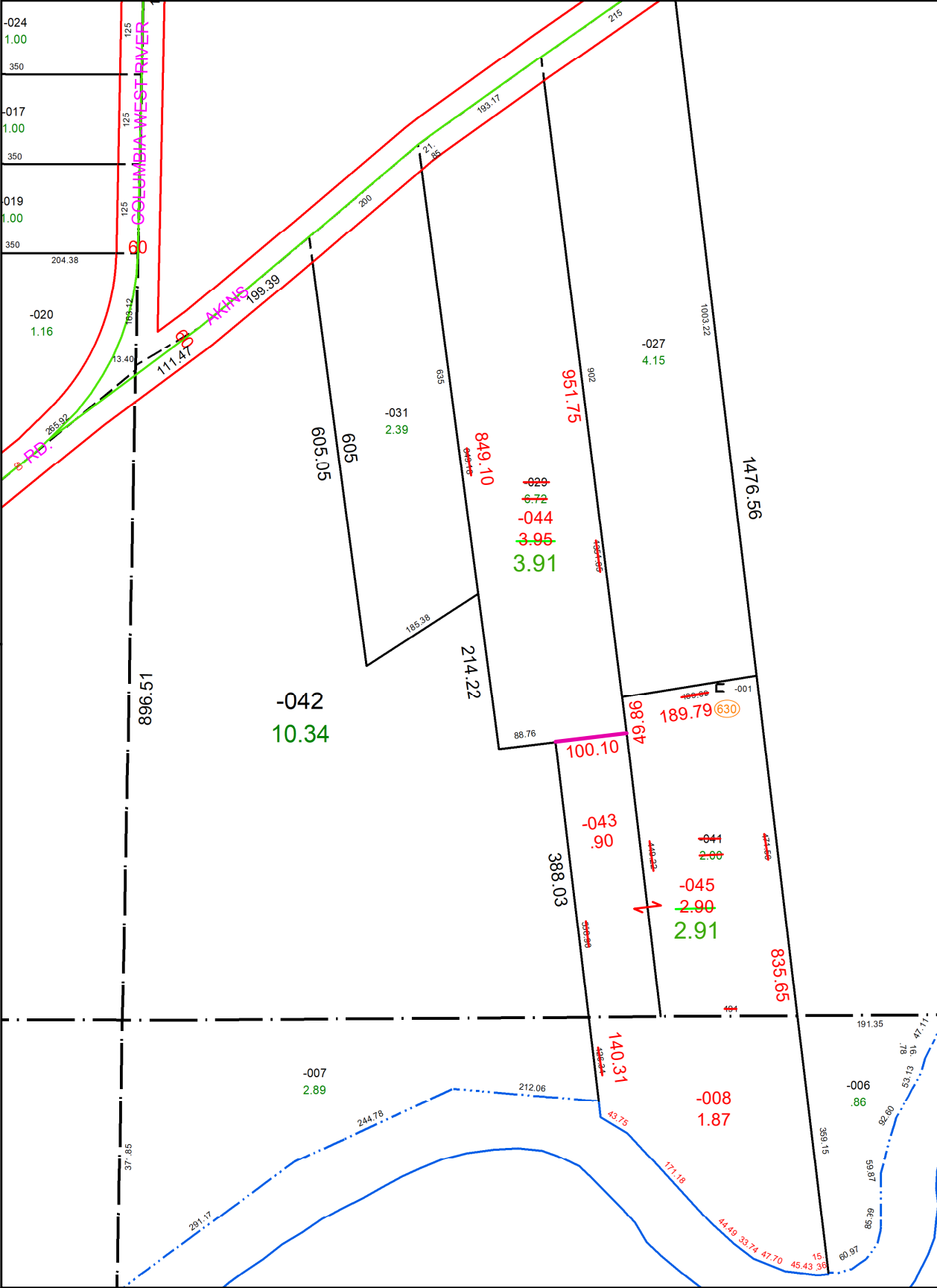
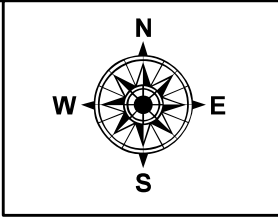


PARENT PARCEL: 12-00-048-000-029 & -041
 CHILD PARCEL: 12-00-048-000-043, -044, -045, & 12-00-049-000-008
 STARTING POINT: **AC CORR PER SURV BY DANIEL P. ENGLE**

23-04741



SPLITS/DEEDS PROCESSED
 LORAIN COUNTY TAX MAP DEPARTMENT
 226 MIDDLE AVE. ELYRIA, OH

SURVEYED BY: DANIEL P. ENGLE **SURV # 50998**
CLOSURE: 1: 100789
MAP PAGE(S): 12-00-048
APPROVED BY: AC **DATE:** August 29, 2023
SCALE: 1 in = 200 ft **PRIOR INSTRUMENT:** 2022- 0891521