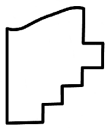
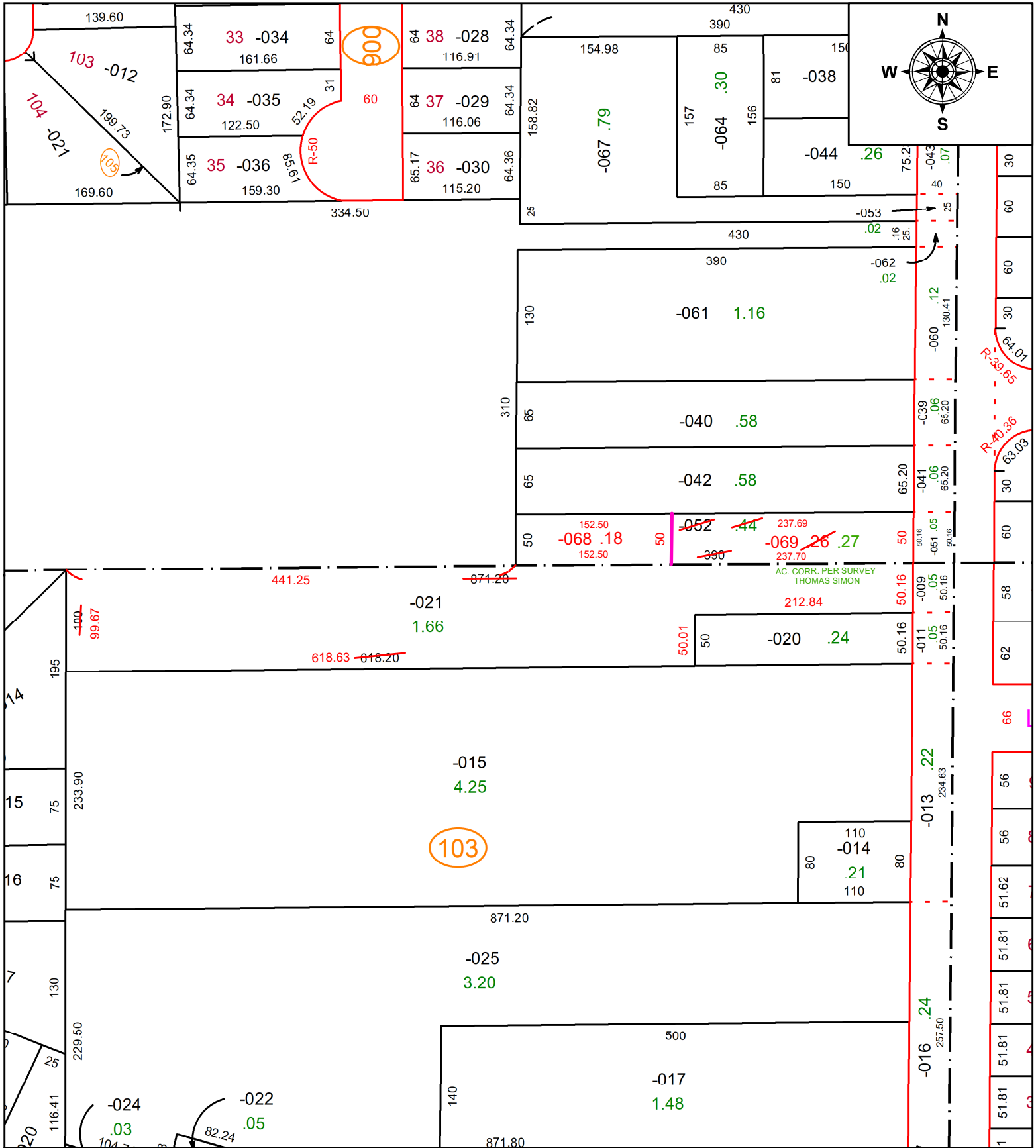


PARENT PARCEL: 06-25-029-106-052 & 06-25-030-103-021

CHILD PARCEL: 06-25-026-106-068 & -069 AND 06-25-030-103-021 ST. TRNS.

STARTING POINT: S.E. CORNER OF O.L 29

23-04740



SPLITS/DEEDS PROCESSED
 LORAIN COUNTY TAX MAP DEPARTMENT
 226 MIDDLE AVE. ELYRIA, OH

SURVEYED BY: THOMAS SIMON **SURVEY #:** 50996
CLOSURE: 1:-2147483648
MAP PAGE(S): 06-25-029 & -030
APPROVED BY: DMA **DATE:** 8/28/2023
SCALE: 1" = 125' **PRIOR INSTRUMENT:** 2012-0420460