

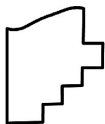
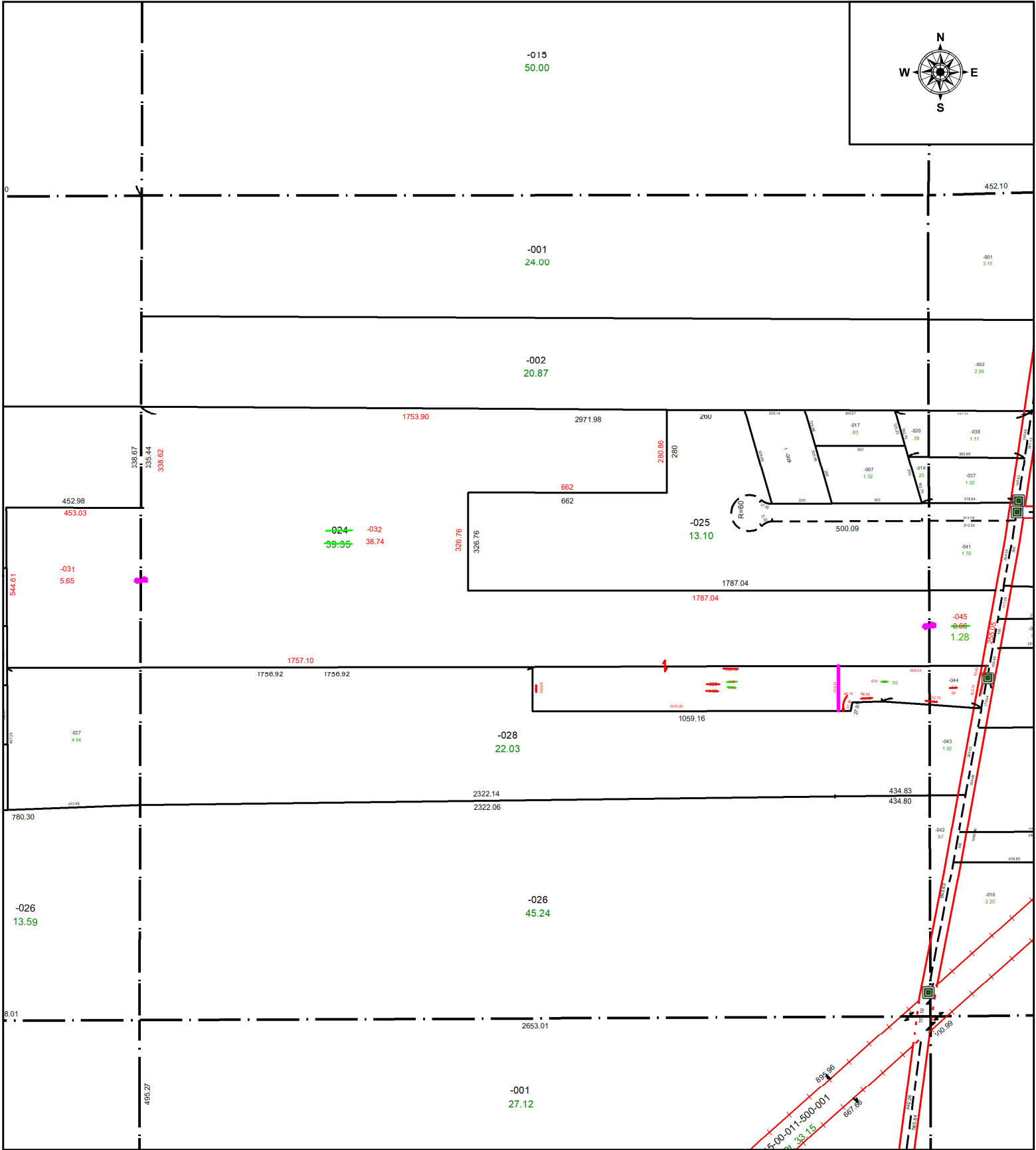
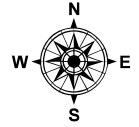
PARENT PARCEL: 15-00-011-000-044, 15-00-012-000-024 & -029

AC CORR PER SURVEYOR THOMAS SIMON

23-04739

CHILD PARCEL: 15-00-011-000-044, -045, 15-00-012-000-030, -031, -032, & 15-00-013-000-031

STARTING POINT: MONUMENT BOX @ INTERSECTION OF C/LS OF CROOK ST & INDIAN HOLLOW RD



**SPLITS/DEEDS PROCESSED**  
LORAIN COUNTY TAX MAP DEPARTMENT  
226 MIDDLE AVE. ELYRIA, OH

SURVEYED BY: THOMAS SIMON

SURVEY # 50992

CLOSURE: 1: 763327

MAP PAGE(S): 15-00-011, 15-00-012, 15-00-013

APPROVED BY: WRZ DATE: 8/23/2023

SCALE: 1" = 425

PRIOR INSTRUMENT: #2022-081629