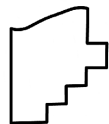
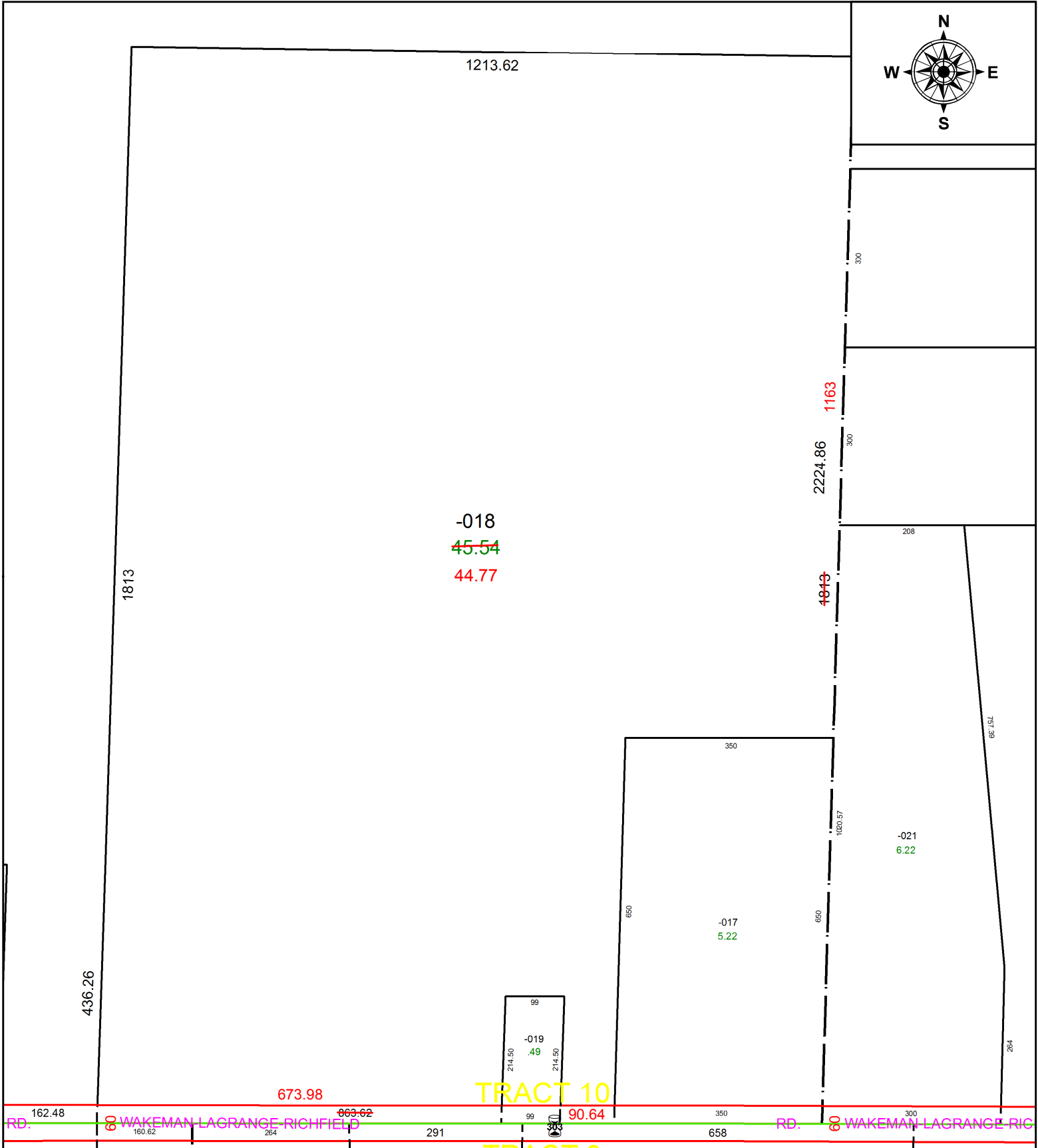


PARENT PARCEL: 13-10-028-000-018

CHILD PARCEL: **AC CORR PER SURV BY LOUIS J. GIFFELS**

STARTING POINT: SE CORNER OF O/L 28 AND C/L OF WAKEMAN-LAGRANGE RICHFIELD RD

21-04736-C



SPLITS/DEEDS PROCESSED
 LORAIN COUNTY TAX MAP DEPARTMENT
 226 MIDDLE AVE. ELYRIA, OH

SURVEYED BY: LOUIS J. GIFFELS
CLOSURE: 1: 2147483648
MAP PAGE(S): 13-10-028
APPROVED BY: AC **DATE:** 12/7/2021
SCALE: 1" = 215 **PRIOR INSTRUMENT:** 2021- 0821618