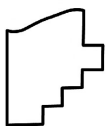
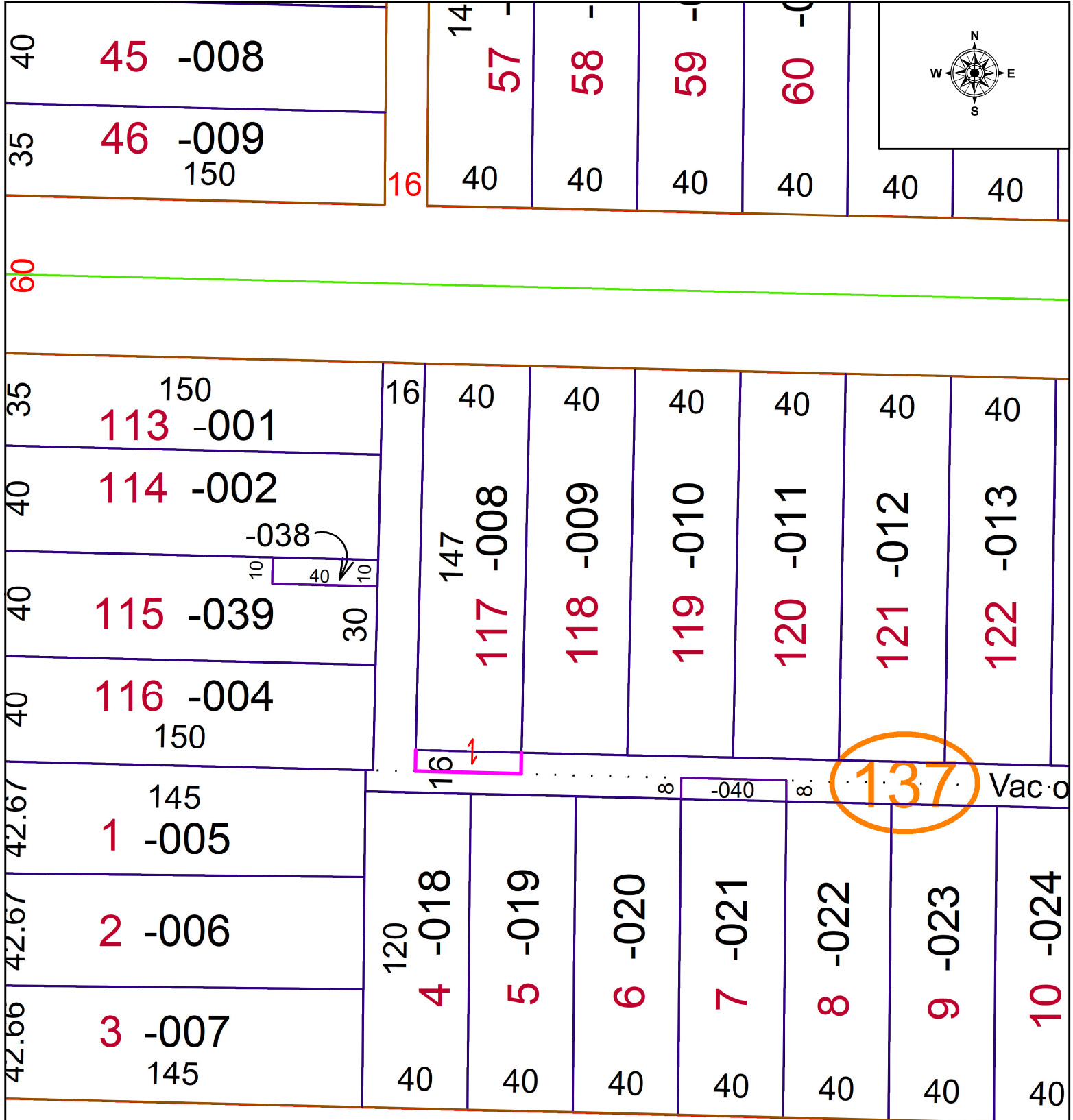


PARENT PARCEL: 02-01-006-137-008

CHILD PARCEL: N/A

STARTING POINT: MAP CORRECTION ONLY

21-04735-C



SPLITS/DEEDS PROCESSED
 LORAIN COUNTY TAX MAP DEPARTMENT
 226 MIDDLE AVE. ELYRIA, OH

SURVEYED BY: _____ N/A
 CLOSURE: _____ N/A
 MAP PAGE(S): 02-01-006
 APPROVED BY: WRZ DATE: 12/1/2021
 SCALE: 1" = 50' PRIOR INSTRUMENT: _____ N/A