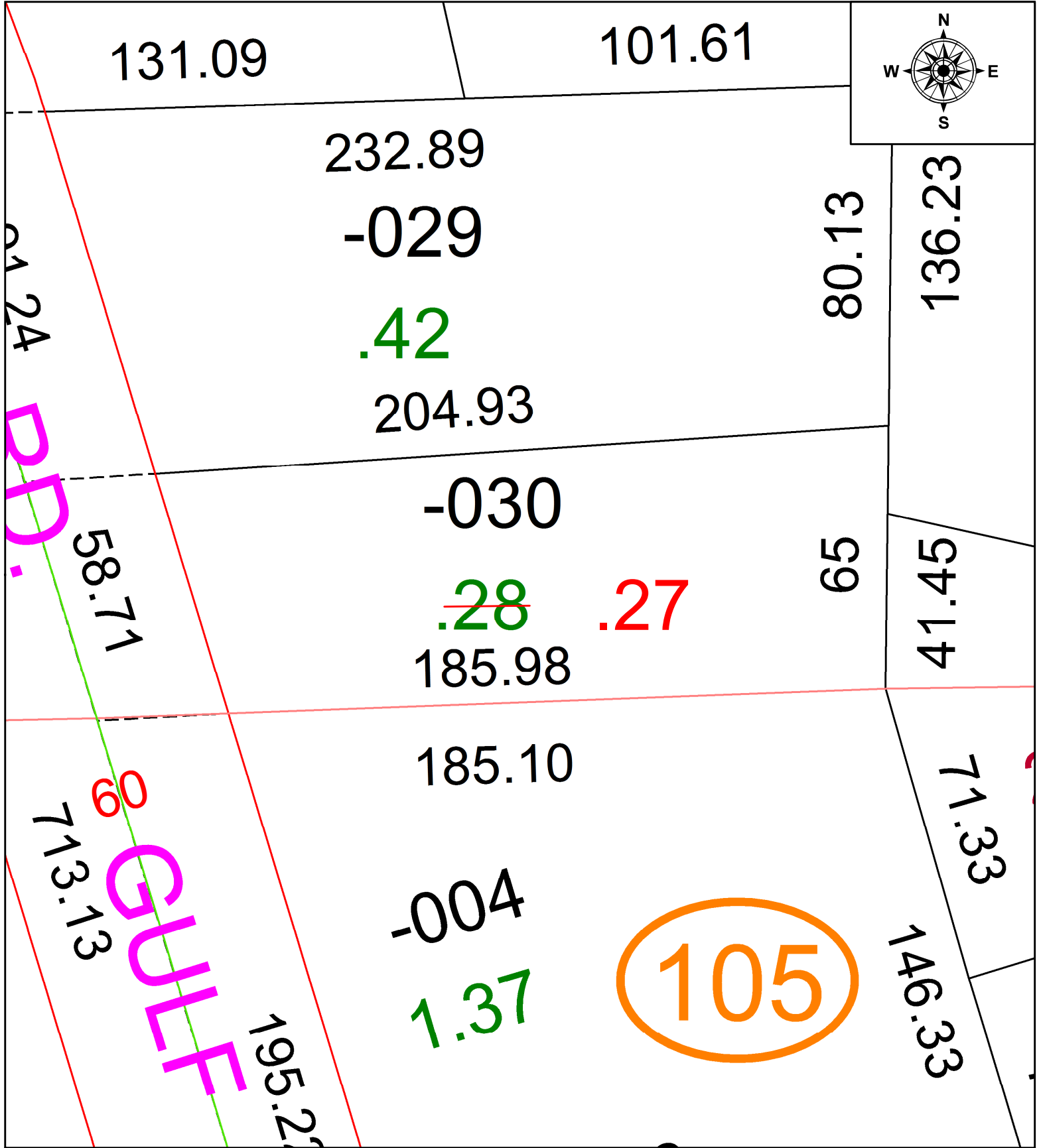


PARENT PARCEL: 06-22-008-104-030

CHILD PARCEL: **AC CORR PER PRIOR DEED**

STARTING POINT: C/L OF GULF RD AND S LINE OF O.L 8

21-04732-A



**SPLITS/DEEDS PROCESSED**  
 LORAIN COUNTY TAX MAP DEPARTMENT  
 226 MIDDLE AVE. ELYRIA, OH

SURVEYED BY: SCHAFFER, HURA, & ASSOC

CLOSURE: 1: 22486

MAP PAGE(S): 06-15

APPROVED BY: AC DATE: 11/24/2021

SCALE: 1" = 30' PRIOR INSTRUMENT: 1996-0400362