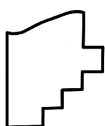
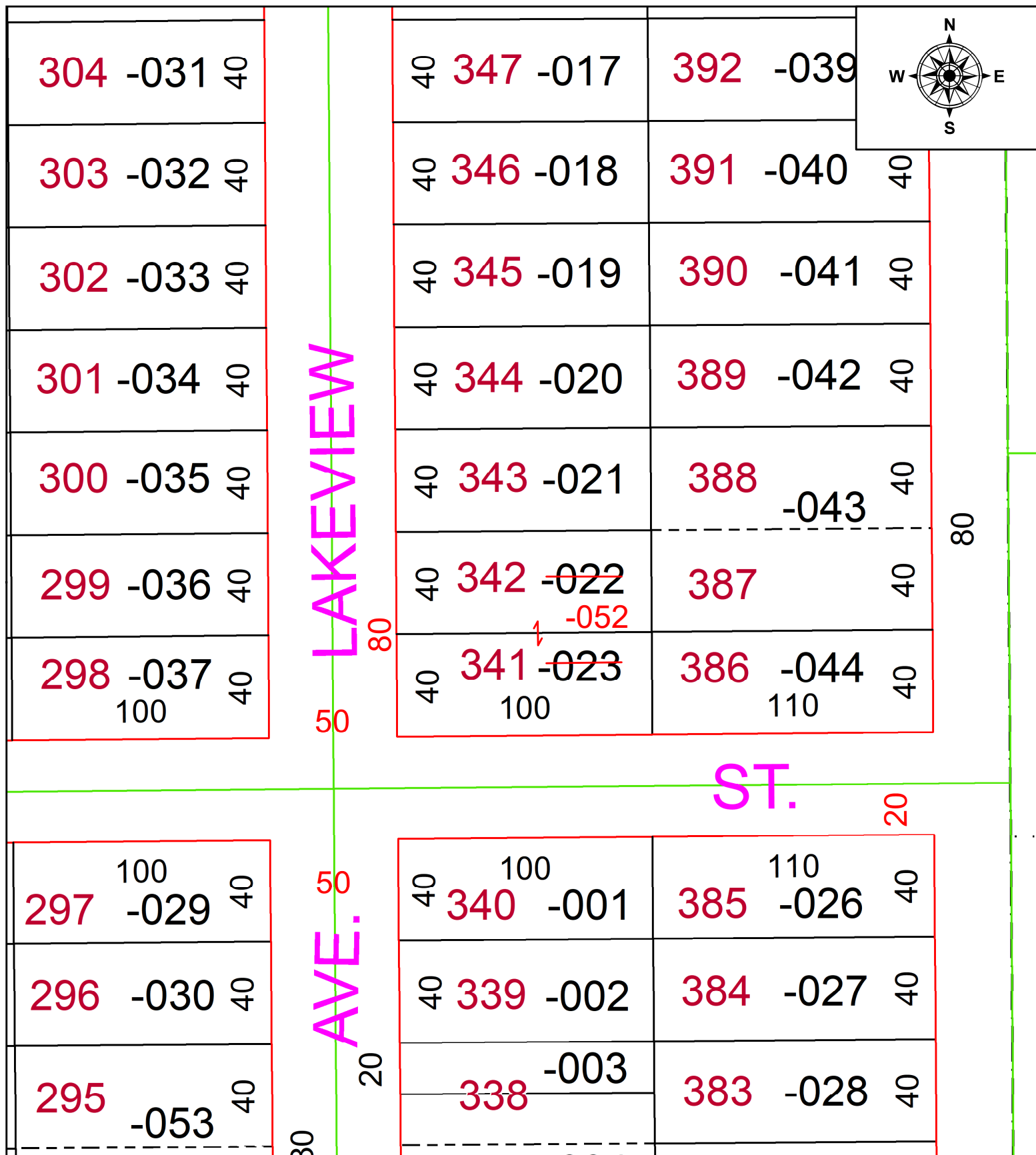


PARENT PARCEL: 02-02-023-106-022 & -023

CHILD PARCEL: 02-02-023-106-052

23-04730

STARTING POINT: COMBINATION PER DEED



SPLITS/DEEDS PROCESSED
 LORAIN COUNTY TAX MAP DEPARTMENT
 226 MIDDLE AVE. ELYRIA, OH

SURVEYED BY: N/A SURV # N/A
 CLOSURE: N/A
 MAP PAGE(S): 02-02-023
 APPROVED BY: AC DATE: July 25, 2023
 SCALE: 1 in = 50 ft PRIOR INSTRUMENT: 2023- 0920603