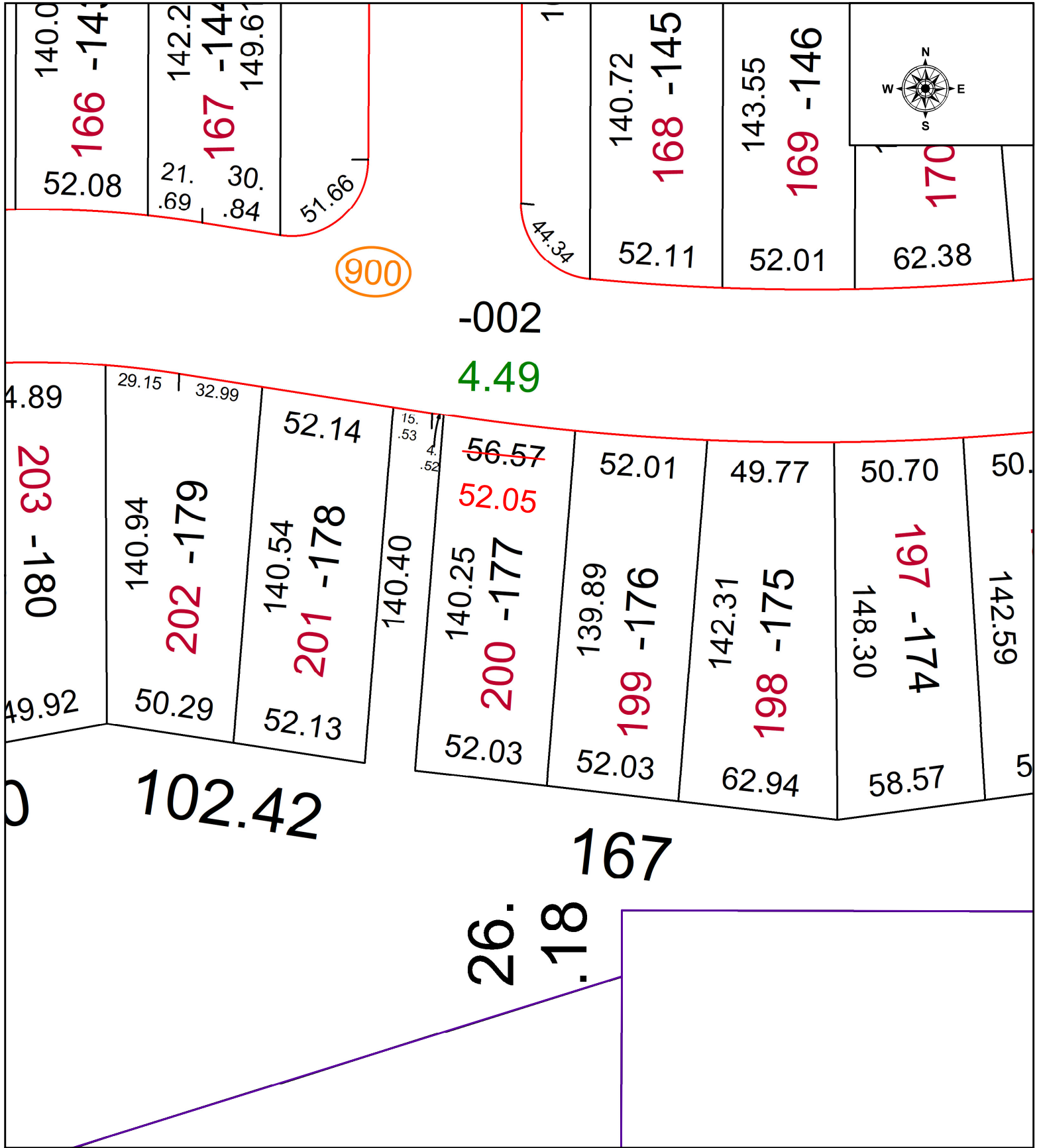


PARENT PARCEL: 11-00-071-000-177

CHILD PARCEL: N/A

STARTING POINT: FRONTAGE CORRECTION PER THE PLAT 110/91

21-04724-C



SPLITS/DEEDS PROCESSED
 LORAIN COUNTY TAX MAP DEPARTMENT
 226 MIDDLE AVE. ELYRIA, OH

SURVEYED BY: _____ N/A
 CLOSURE: _____ N/A
 MAP PAGE(S): 11-00-071
 APPROVED BY: _____ WRZ DATE: 11/17/2021
 SCALE: 1" = 50' PRIOR INSTRUMENT: _____ N/A