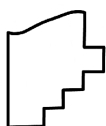
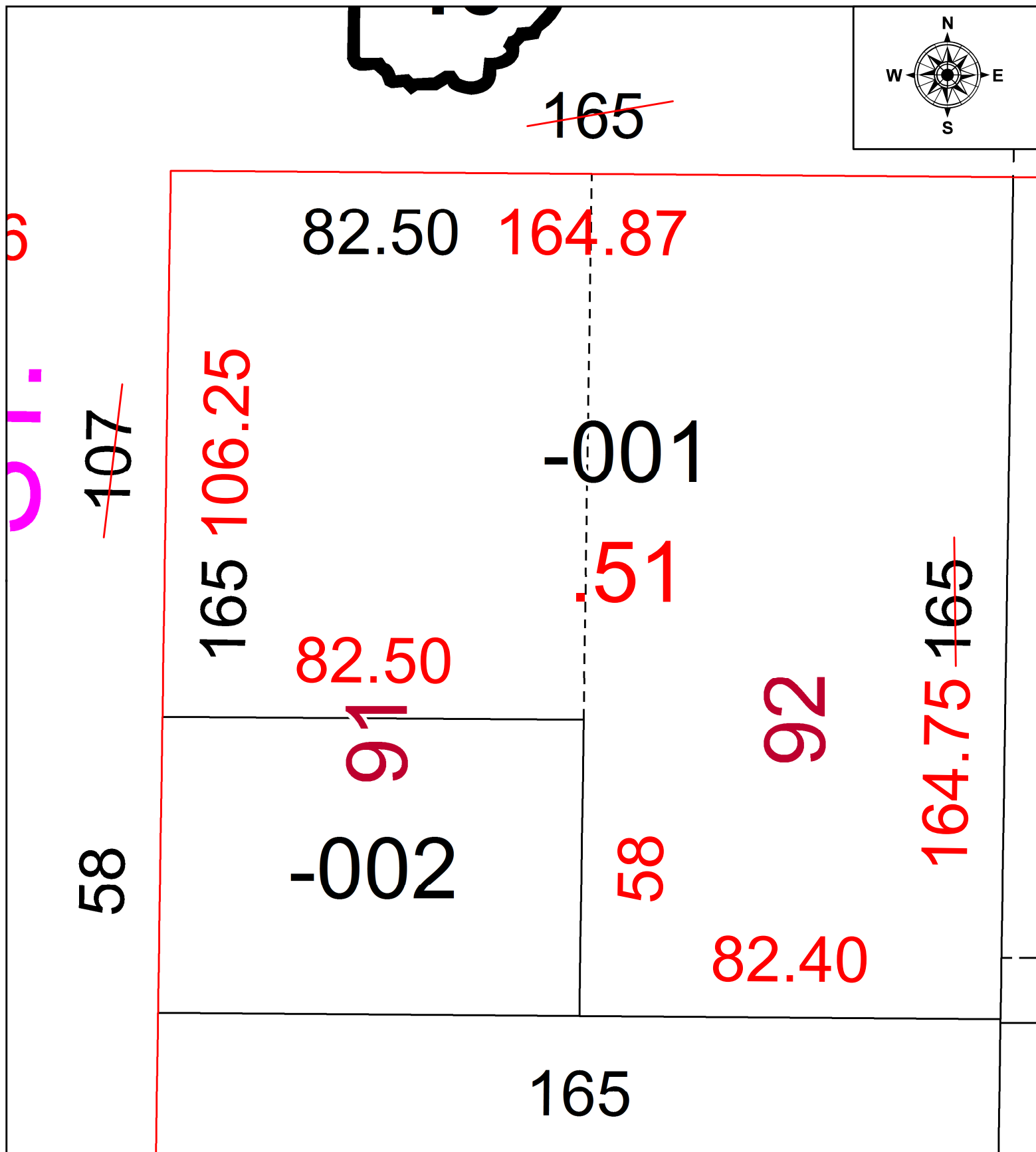
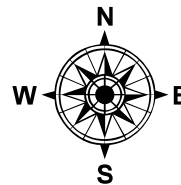


PARENT PARCEL: 18-00-022-102-001

CHILD PARCEL: **FRONTAGE & DEPTH TO AC. CORR. PER SURVEY THOMAS SIMON**

STARTING POINT: CL OF COURTLAND ST. & EAST HERRICK ST.

21-04721-C



SPLITS/DEEDS PROCESSED
 LORAIN COUNTY TAX MAP DEPARTMENT
 226 MIDDLE AVE. ELYRIA, OH

SURVEYED BY: THOMAS SIMON
 CLOSURE: 1: 94,418
 MAP PAGE(S): 18-00-022
 APPROVED BY: DMA DATE: 11/16/2021
 SCALE: 1" = 25' PRIOR INSTRUMENT: 20170656386