

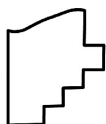
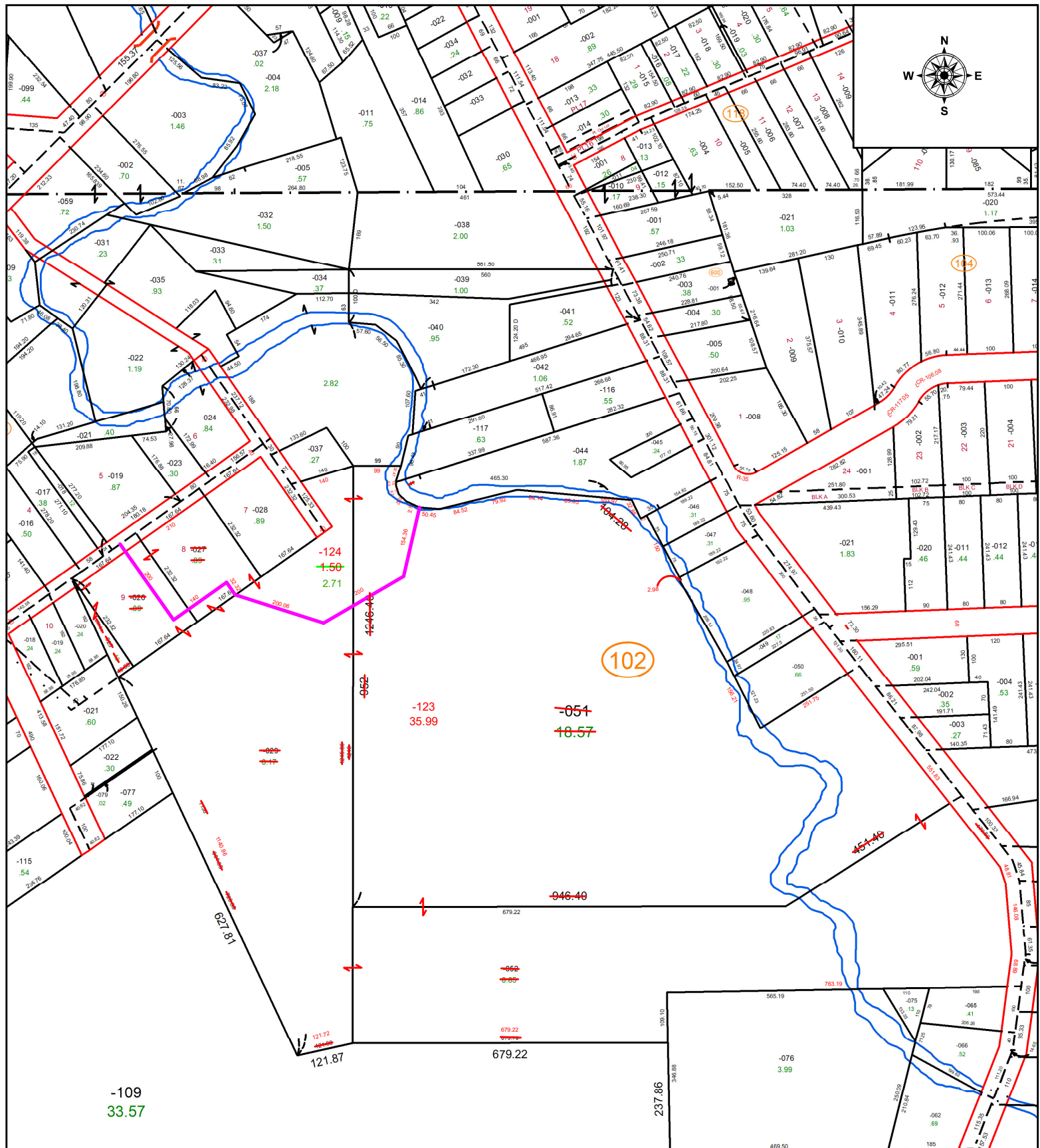
PARENT PARCEL: 04-00-011-102-025, -026, -027, -029, -051, & -052

CHILD PARCEL: 04-00-011-102-123 & -124

AC CORR PER SURVEYOR DONALD SHEEHY

23-04720

STARTING POINT: INTERSECTION OF C/LS OF HAYES ST & CENTENNIAL AVE



**SPLITS/DEEDS PROCESSED**

LORAIN COUNTY TAX MAP DEPARTMENT  
226 MIDDLE AVE. ELYRIA, OH

SURVEYED BY: DONALD SHEEHY

SURVEY # 50934

CLOSURE: 1: 582168

MAP PAGE(S): 04-00-011

APPROVED BY: WRZ DATE: 7/6/2023

SCALE: 1" = 275

PRIOR INSTRUMENT: #1998-0520127