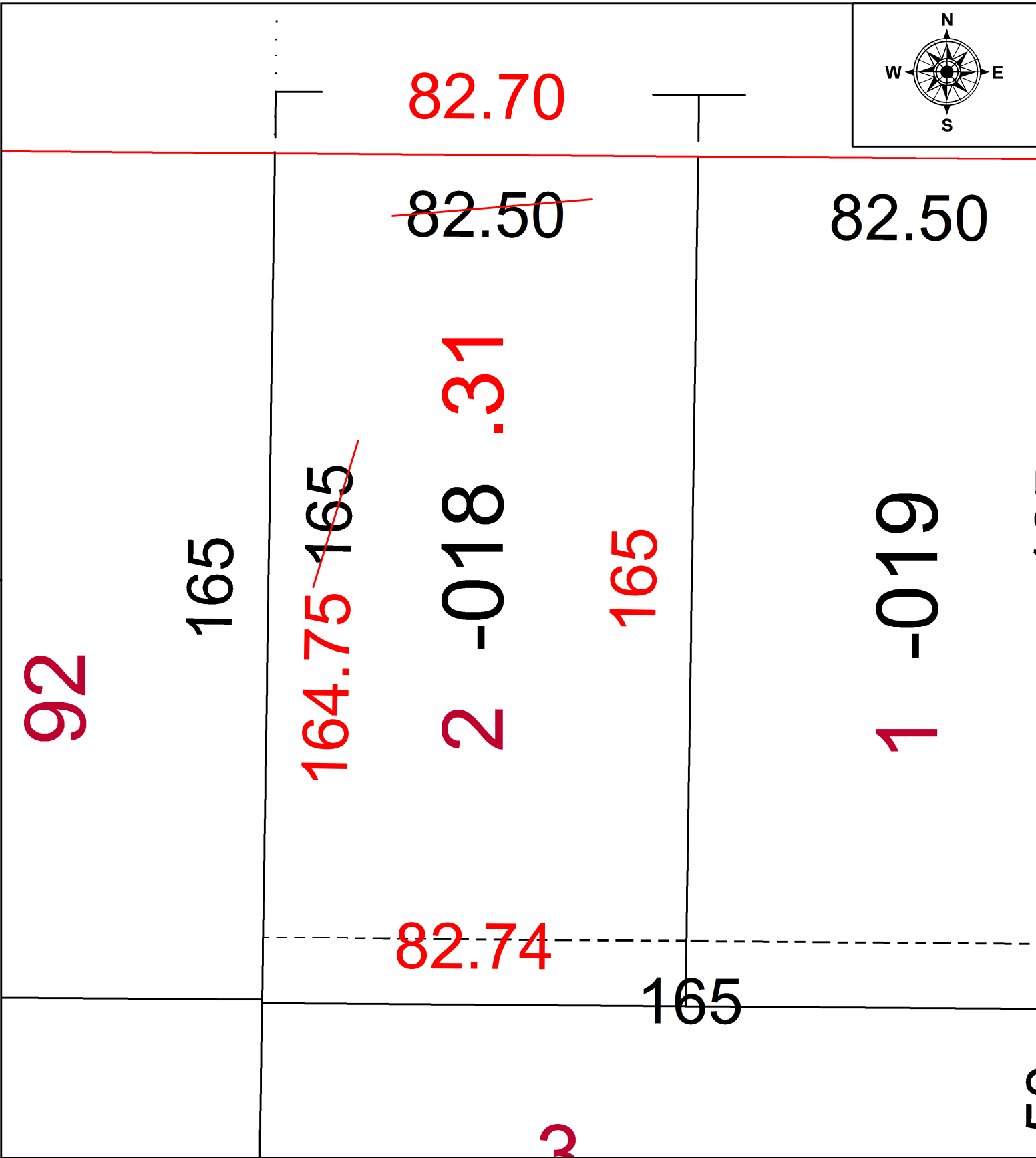
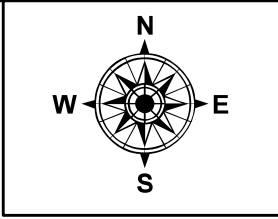


PARENT PARCEL: 18-00-022-102-018

CHILD PARCEL: **FRONTAGE & DEPTH TO AC. CORR. PER SURVEY THOMAS SIMON**

STARTING POINT: CL OF COURTLAND ST. & EAST HERRICK ST.

21-04720-C



**SPLITS/DEEDS PROCESSED**  
 LORAIN COUNTY TAX MAP DEPARTMENT  
 226 MIDDLE AVE. ELYRIA, OH

SURVEYED BY: THOMAS SIMON  
 CLOSURE: 1: 357,782  
 MAP PAGE(S): 18-00-022  
 APPROVED BY: DMA DATE: 11/16/2021  
 SCALE: 1" = 25' PRIOR INSTRUMENT: 20170656386