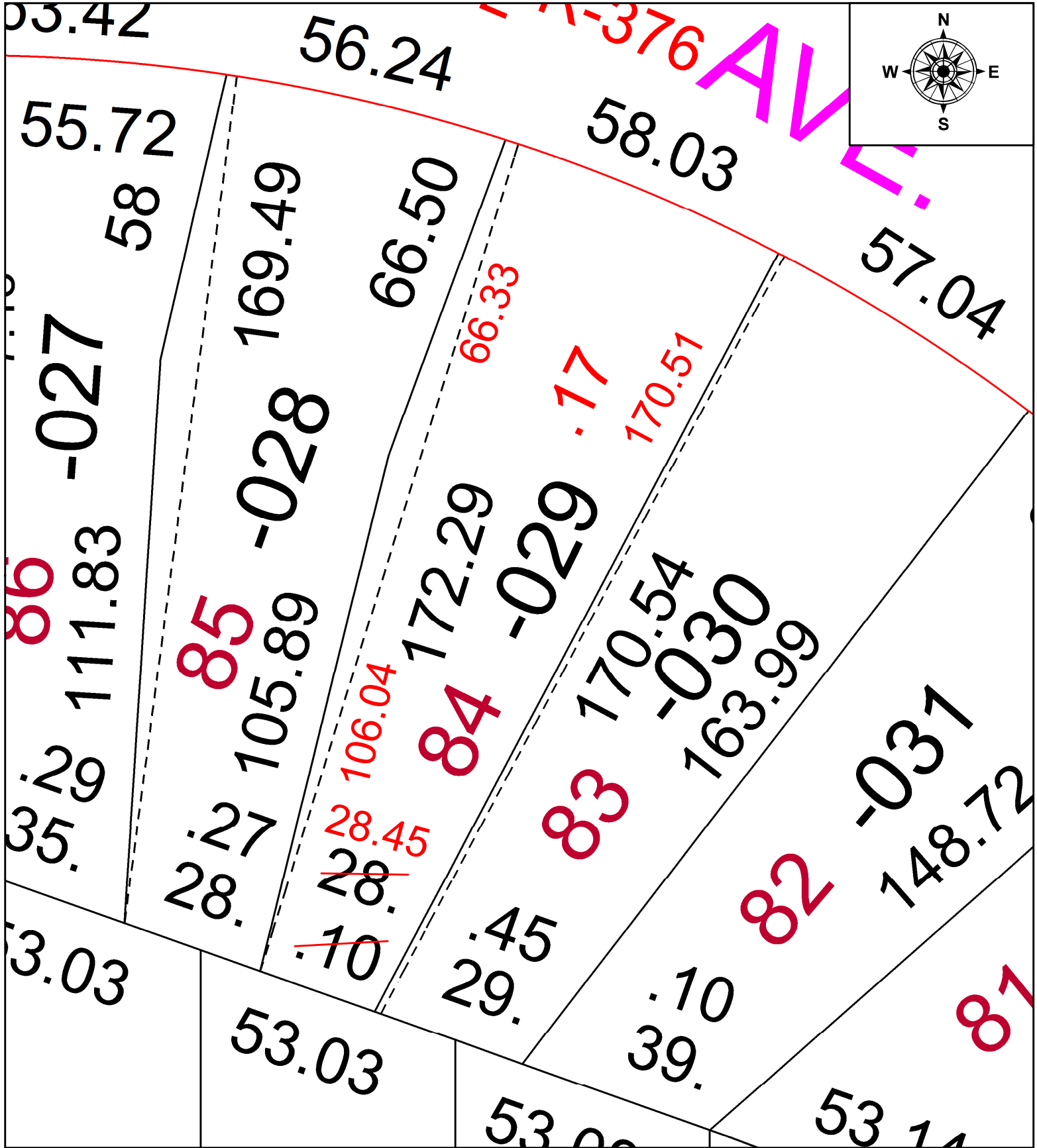


PARENT PARCEL: 06-24-028-109-029

CHILD PARCEL: **FRONTAGE & DEPTH TO ACREAGE CORRECTION**

STARTING POINT: S.E. CORNER OF SUBLOT 84 OF CASCADE COLONY SUB.

21-04718-C



SPLITS/DEEDS PROCESSED
 LORAIN COUNTY TAX MAP DEPARTMENT
 226 MIDDLE AVE. ELYRIA, OH

SURVEYED BY: THOMAS SIMON
 CLOSURE: 1: 143,357
 MAP PAGE(S): 06-24-028
 APPROVED BY: DMA DATE: 11/15/2021
 SCALE: 1" = 25' PRIOR INSTRUMENT: 20210846347