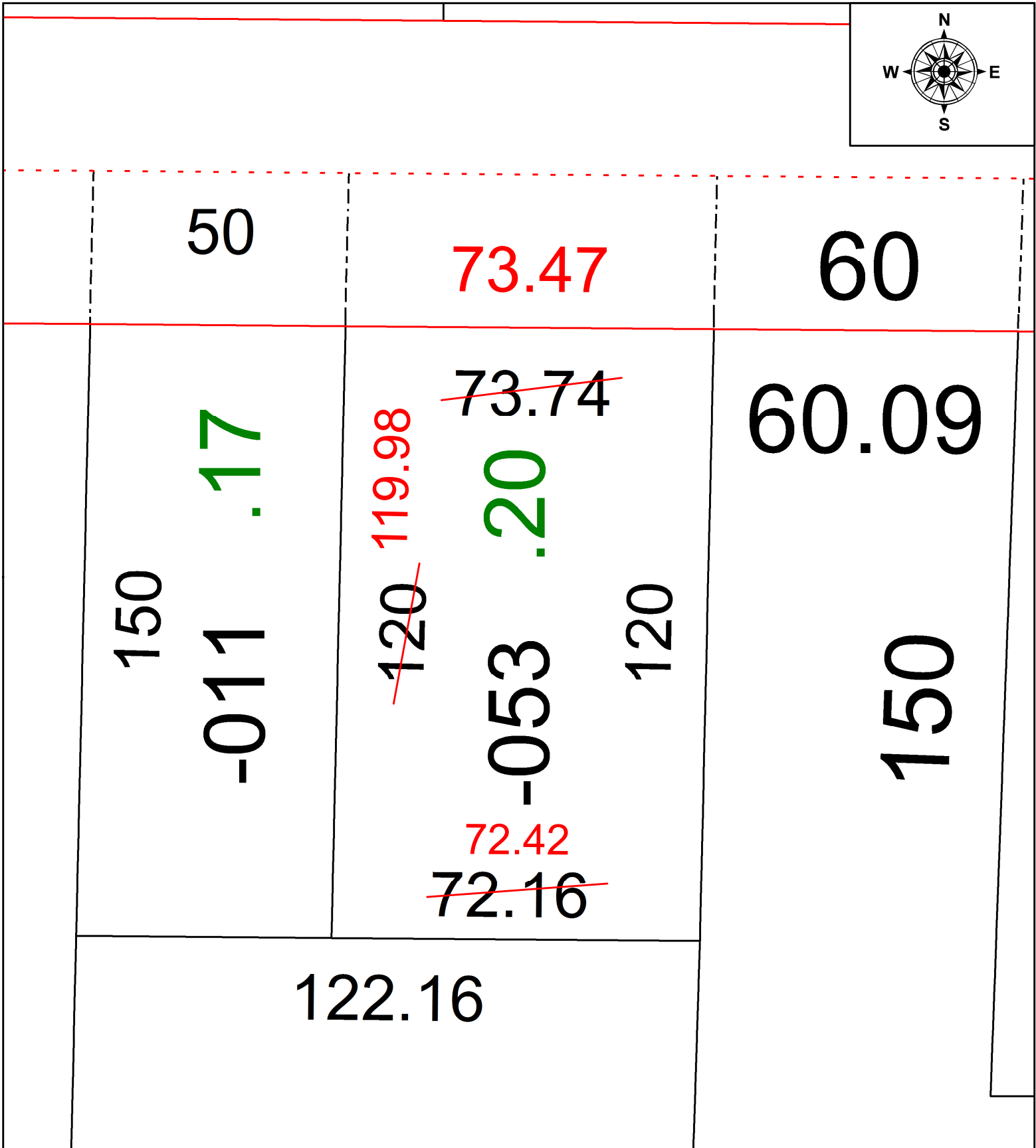
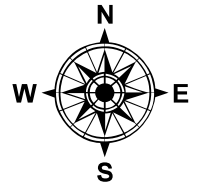


PARENT PARCEL: 03-00-102-115-053

CHILD PARCEL: **MAP CORRECTION ONLY**

STARTING POINT: NORTH LINE OF E. 36TH ST & S.W. CORNER S/L 3966 SHEFFIELD LAND & IMPROV. CO'S PROP. SUB. NO. 7

21-04717-C



50

73.47

60

150

-011 .17

~~120 119.98~~

~~73.74~~

.20

-053

120

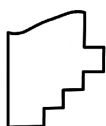
60.09

150

72.42

~~72.16~~

122.16



**SPLITS/DEEDS PROCESSED**  
LORAIN COUNTY TAX MAP DEPARTMENT  
226 MIDDLE AVE. ELYRIA, OH

SURVEYED BY: JAMES RESAR  
 CLOSURE: 1: 98,232  
 MAP PAGE(S): 03-00-102  
 APPROVED BY: DMA DATE: 11/16/2021  
 SCALE: 1" = 25' PRIOR INSTRUMENT: 20010788898