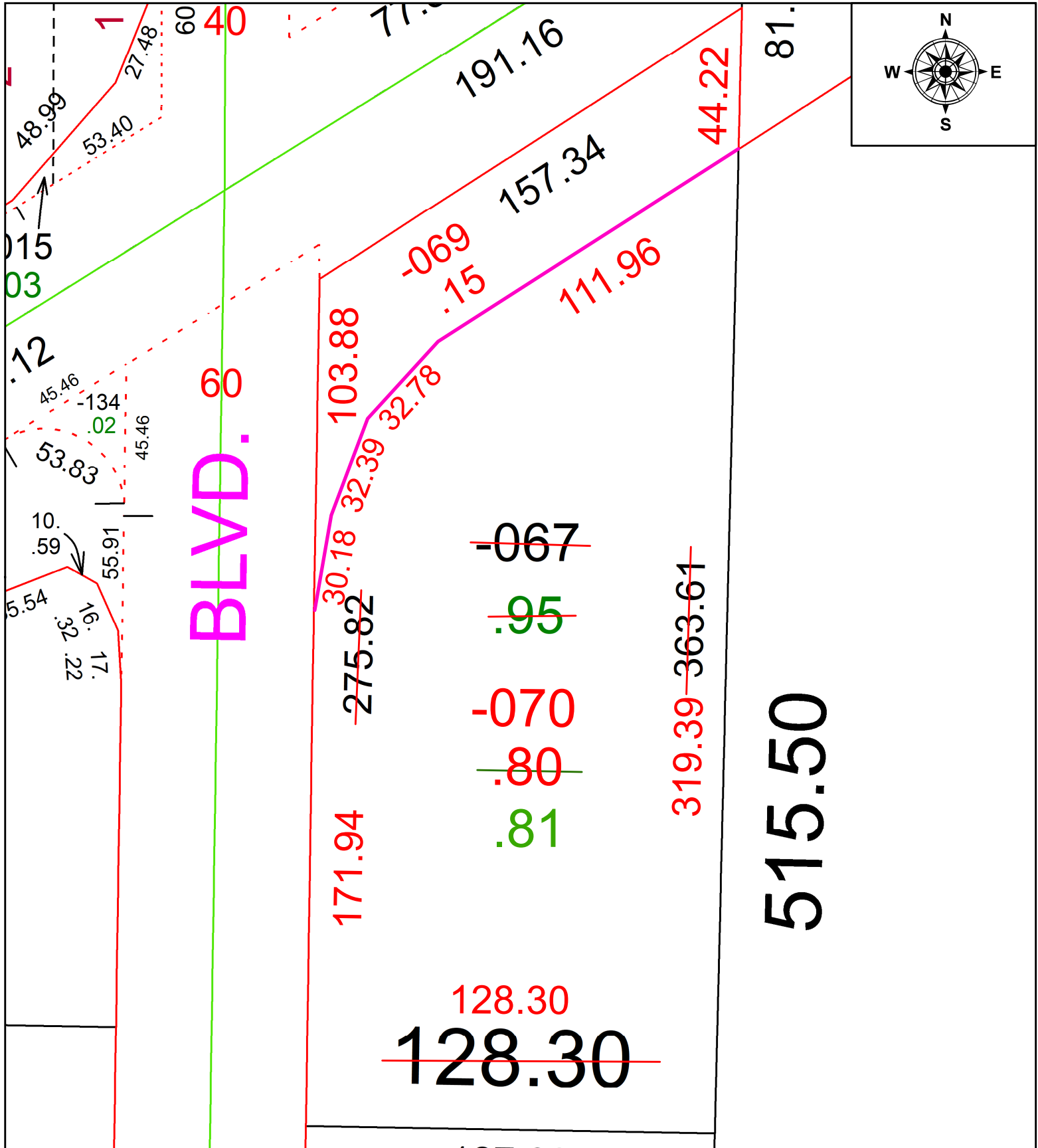


PARENT PARCEL: 07-00-016-112-067

CHILD PARCEL: 07-00-016-112-069, -070 AC CORR. PER SURVEYOR STEVEN METCALF

23-04713

STARTING POINT: INTERSECTION OF PITTS BLVD & CENTER RIDGE RD CENTERLINES



SPLITS/DEEDS PROCESSED
 LORAIN COUNTY TAX MAP DEPARTMENT
 226 MIDDLE AVE. ELYRIA, OH

SURVEYED BY: STEVEN J. METCALF **SURVEY #:** 50919
CLOSURE: 1: 118,816
MAP PAGE(S): 07-00-016
APPROVED BY: SP **DATE:** 6/16/2023
SCALE: 1" = 40' **PRIOR INSTRUMENT:** 2022-0880135