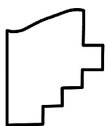
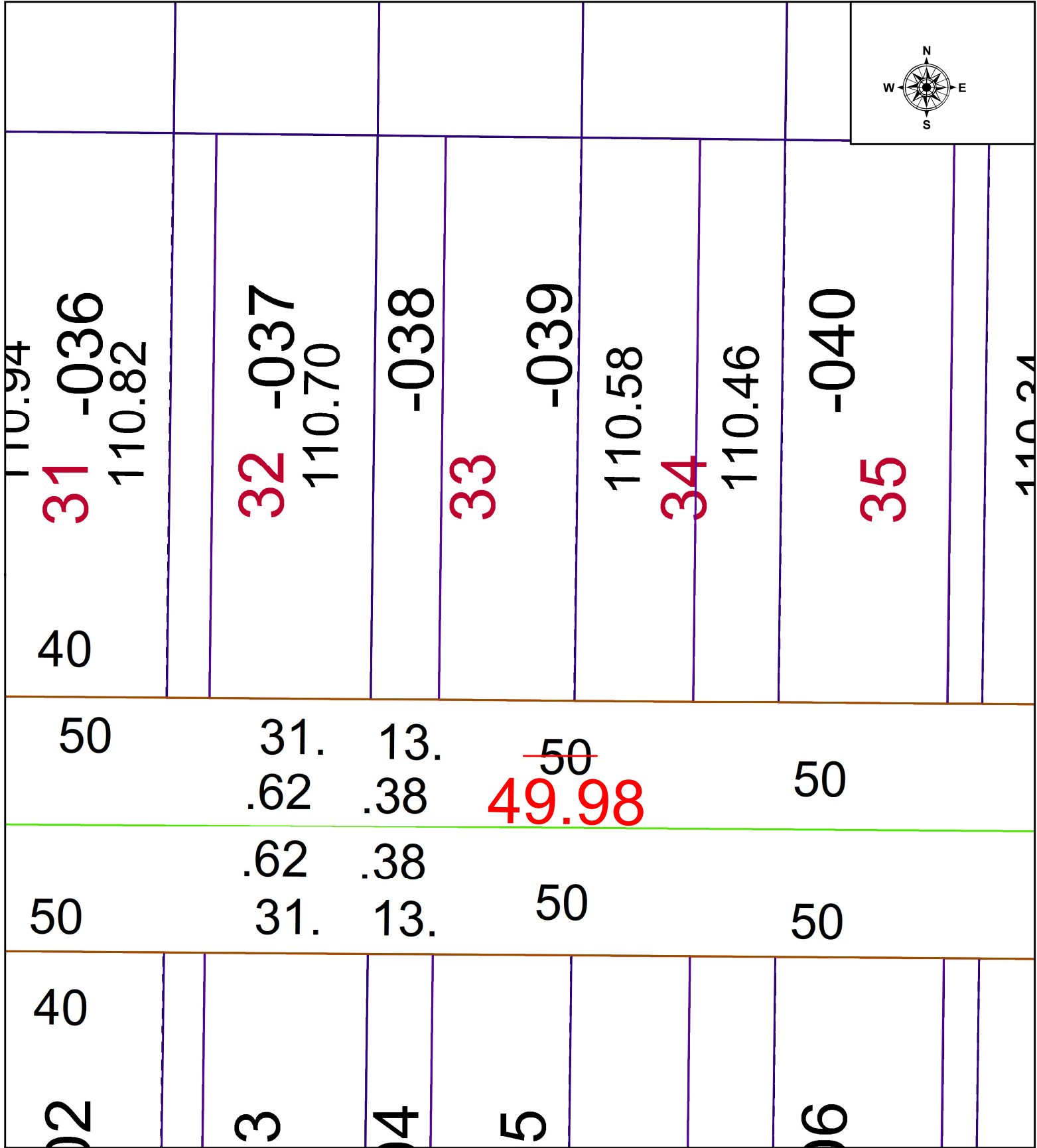


PARENT PARCEL: 03-00-029-102-039

CHILD PARCEL: N/A

STARTING POINT: FRONTAGE CORRECTION PER PRIOR DEED

21-04705-C



**SPLITS/DEEDS PROCESSED**  
 LORAIN COUNTY TAX MAP DEPARTMENT  
 226 MIDDLE AVE. ELYRIA, OH

SURVEYED BY: N/A  
 CLOSURE: N/A  
 MAP PAGE(S): 03-00-029  
 APPROVED BY: WRZ DATE: 10/29/2021  
 SCALE: 1" = 25' PRIOR INSTRUMENT: 2017-0627007