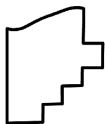
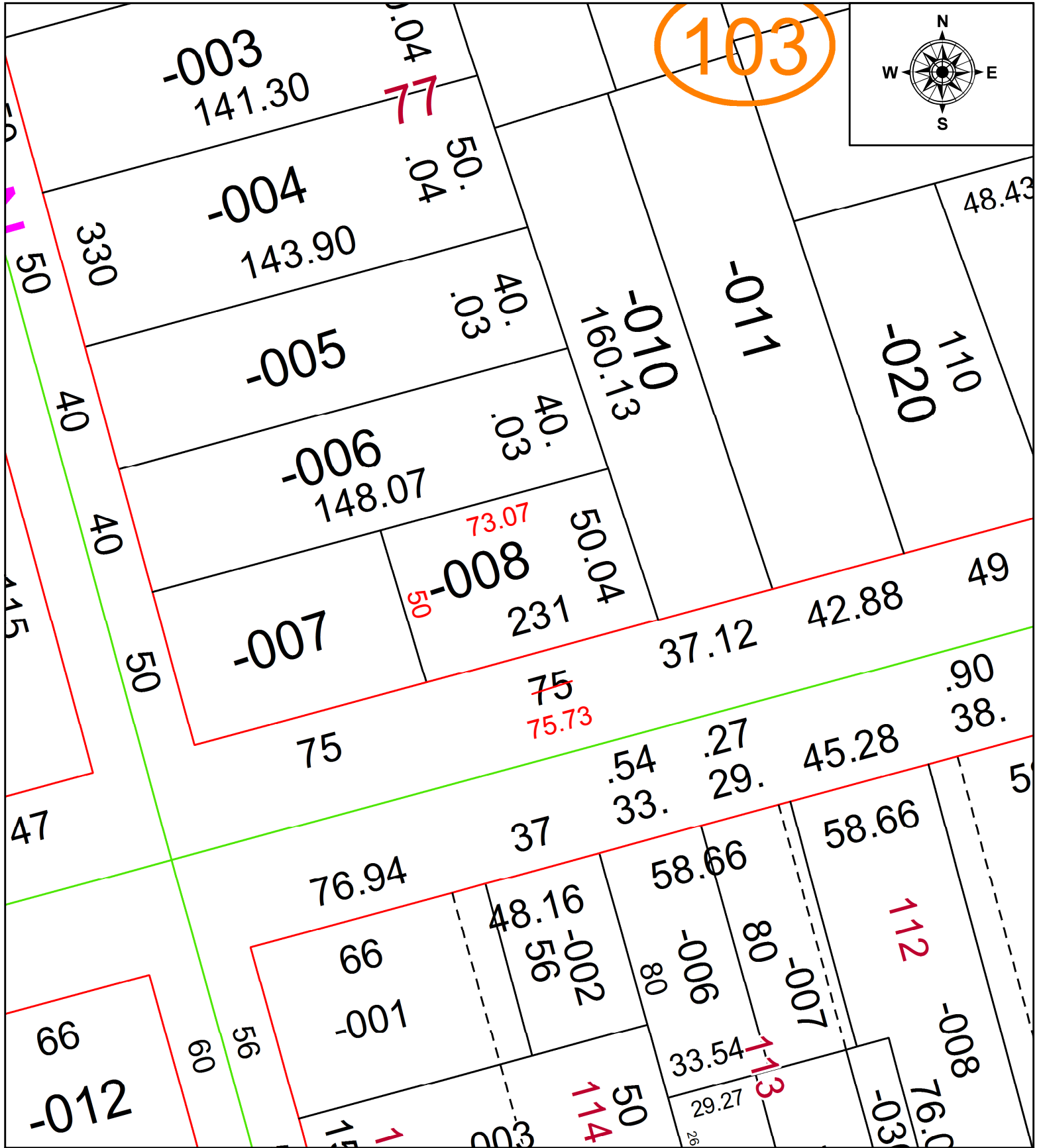


PARENT PARCEL: 02-01-006-103-008

CHILD PARCEL: **FRONTAGE & DEPTH CORR**

STARTING POINT: EAST LINE OF HAMILTON AVE AND SW CORNER OF S/L 77

21-04702-C



SPLITS/DEEDS PROCESSED
 LORAIN COUNTY TAX MAP DEPARTMENT
 226 MIDDLE AVE. ELYRIA, OH

SURVEYED BY: _____ N/A
 CLOSURE: _____ N/A
 MAP PAGE(S): _____ 02-01-006
 APPROVED BY: _____ AC DATE: _____ 10/26/2021
 SCALE: _____ 1" = 40 _____ PRIOR INSTRUMENT: _____ VOLUME F PAGE 420