

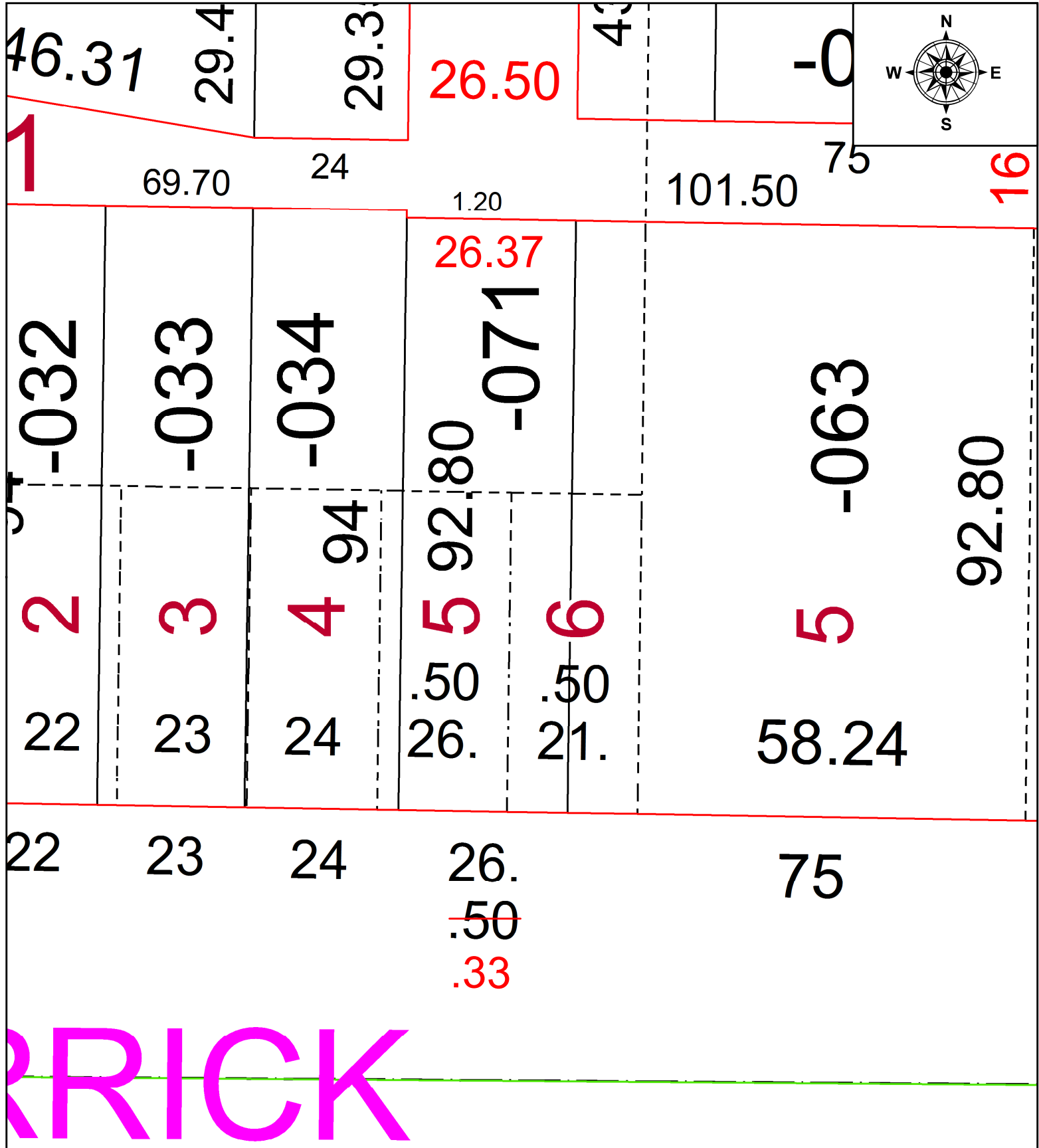
PARENT PARCEL: 18-00-021-110-071

FRONTAGE CORR PER SURV BY JOSHUA S. RIEDY

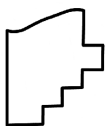
21-04699-C

CHILD PARCEL:

STARTING POINT: C/L OF HERRICK AVE AND N MAIN ST



HERRICK



SPLITS/DEEDS PROCESSED
LORAIN COUNTY TAX MAP DEPARTMENT
226 MIDDLE AVE. ELYRIA, OH

SURVEYED BY:	JOSHUA S. RIEDY
CLOSURE:	1: 274724
MAP PAGE(S):	18-00-021
APPROVED BY:	AC DATE: 10/21/2021
SCALE:	1" = 20' PRIOR INSTRUMENT: 2019- 0736383