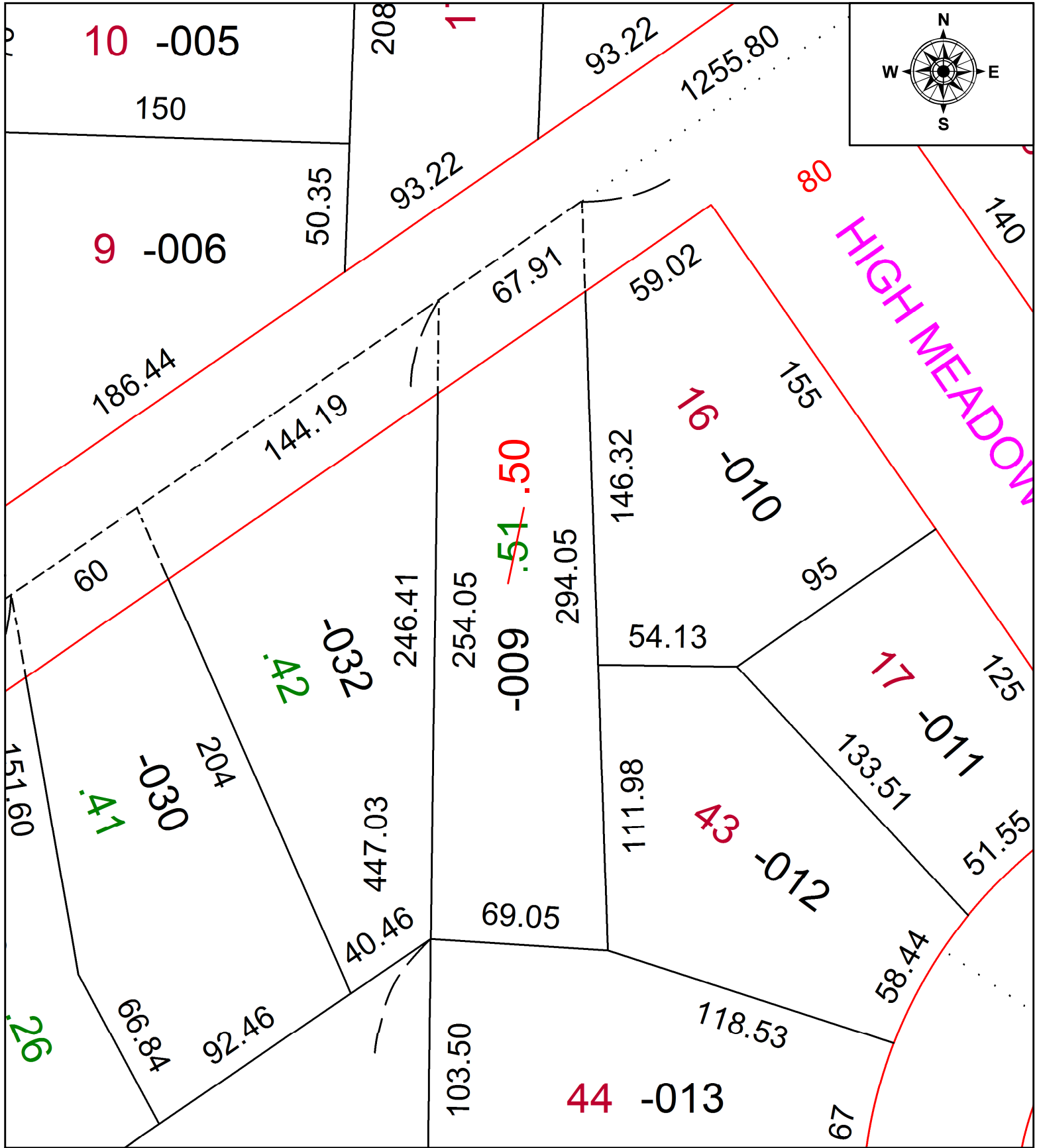


PARENT PARCEL: 09-00-088-105-009

CHILD PARCEL: **AC. CORR. PER PRIOR INSTR. # 20150554798**

STARTING POINT: CL OF EAST COLLEGE ST & HIGH MEADOW WAY

21-04695-A



SPLITS/DEEDS PROCESSED
 LORAIN COUNTY TAX MAP DEPARTMENT
 226 MIDDLE AVE. ELYRIA, OH

SURVEYED BY: XXXXXXXXXXXXXXXX
 CLOSURE: 1: 6711
 MAP PAGE(S): 09-00-088
 APPROVED BY: DMA DATE: 10/21/2021
 SCALE: 1" = 50' PRIOR INSTRUMENT: 20150554798