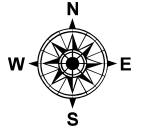
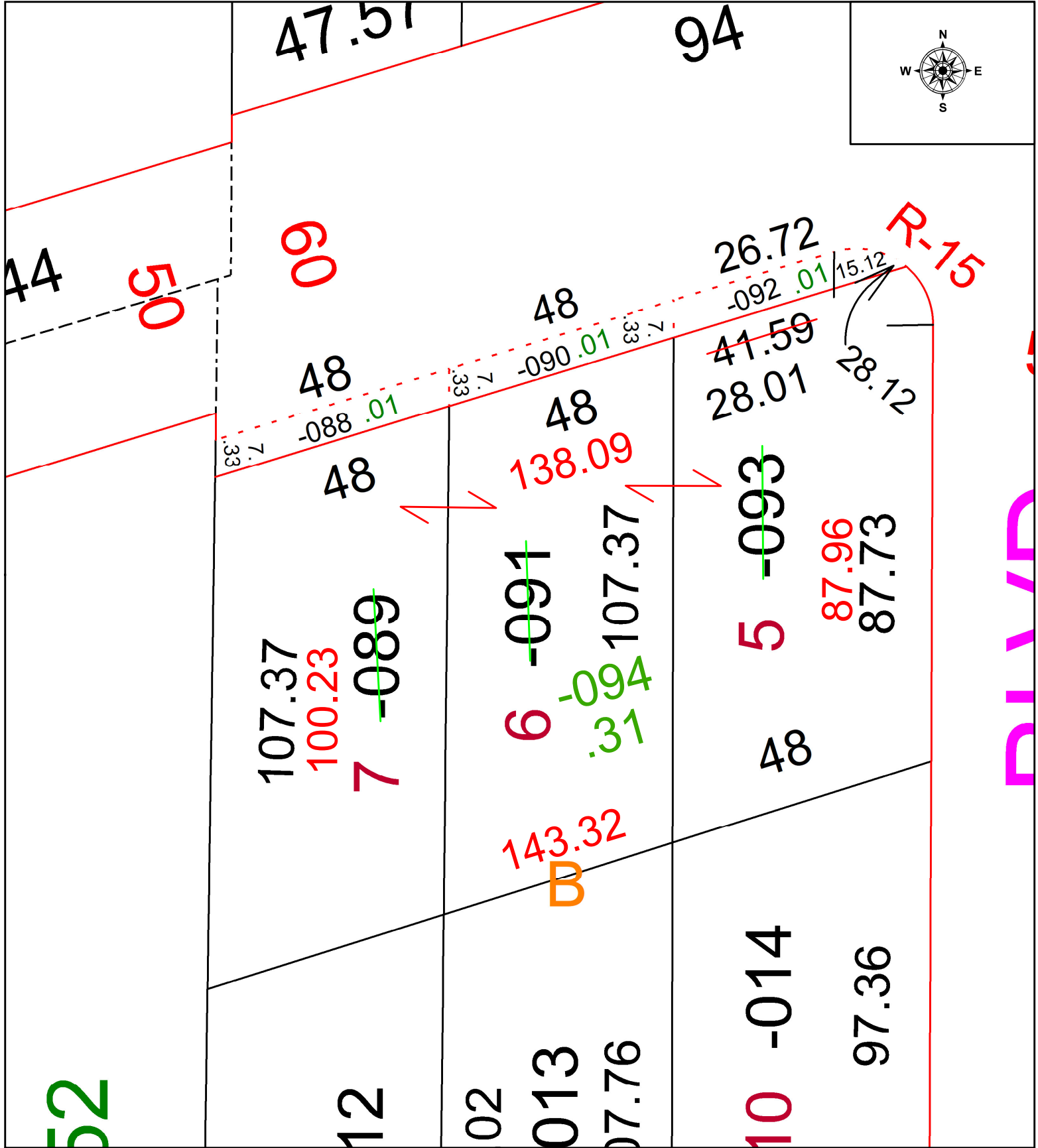


PARENT PARCEL: 03-00-037-102-089, -091, & -093

CHILD PARCEL: 03-00-037-102-094

STARTING POINT: SOUTHEASTERLY CORNER OF S/L 5 IN CORAL BEACH SUBDIVISION

23-04692



SPLITS/DEEDS PROCESSED
 LORAIN COUNTY TAX MAP DEPARTMENT
 226 MIDDLE AVE. ELYRIA, OH

SURVEYED BY: THOMAS SIMON SURVEY # 50892
 CLOSURE: 1: 65771
 MAP PAGE(S): 03-00-037
 APPROVED BY: WRZ DATE: 5/17/2023
 SCALE: 1" = 25' PRIOR INSTRUMENT: #2022-0885244