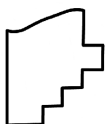
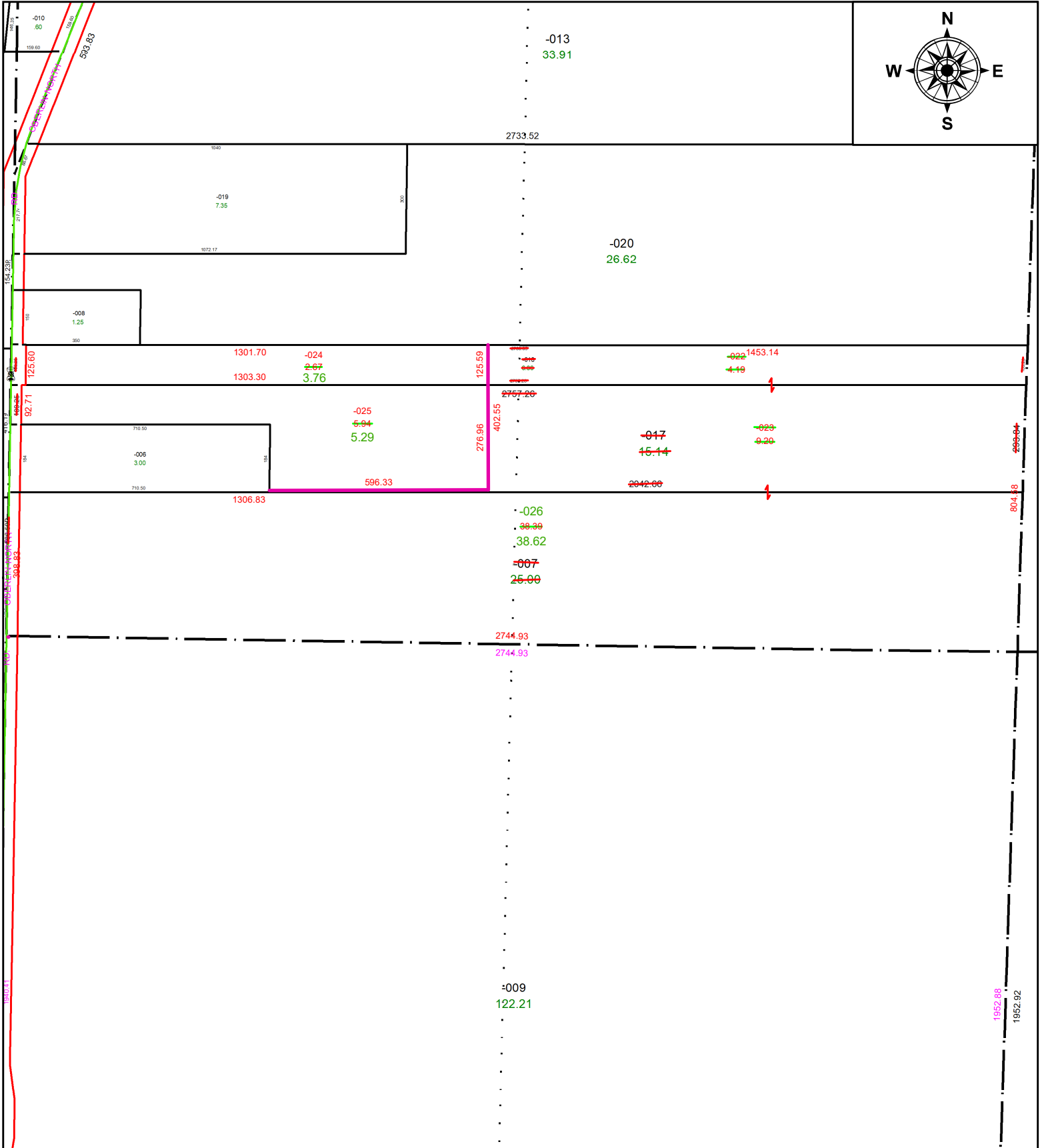


PARENT PARCEL: 09-00-006-000-007, -017, -018

CHILD PARCEL: 09-00-006-000-022 THRU -026

STARTING POINT: **AC CORR PER SURV BY THOMAS A SIMON**

23-04690



SPLITS/DEEDS PROCESSED
 LORAIN COUNTY TAX MAP DEPARTMENT
 226 MIDDLE AVE. ELYRIA, OH

SURVEYED BY: THOMAS A. SIMON SURV # 50887

CLOSURE: 1: 852848

MAP PAGE(S): 09-00-006-A, B

APPROVED BY: AC DATE: May 11, 2023

SCALE: 1 in = 350 ft PRIOR INSTRUMENT: 1997- 0489207