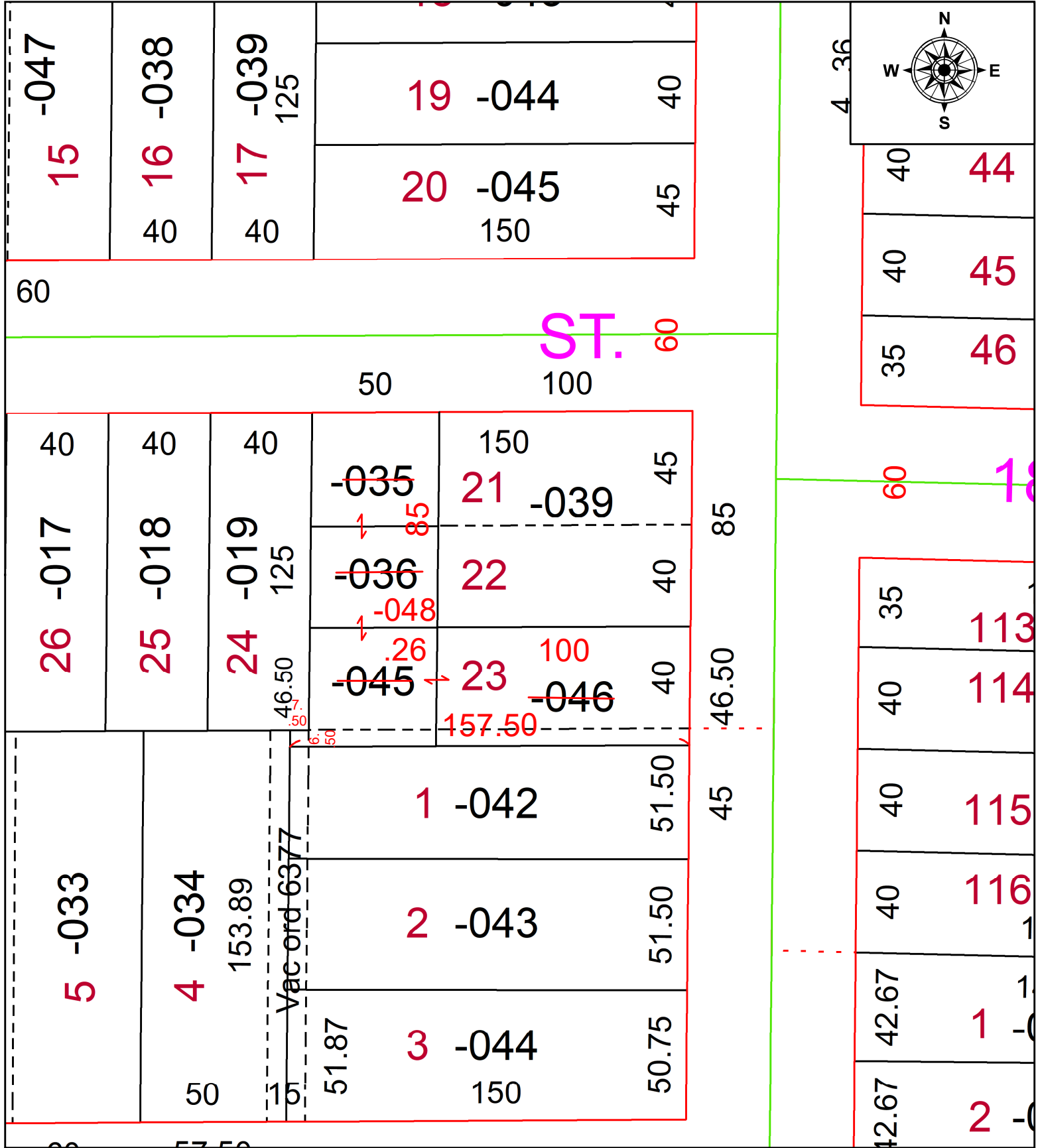


PARENT PARCEL: 02-02-025-114-035, -036, -045, -046

CHILD PARCEL: 02-02-025-114-048

STARTING POINT: N LINE OF S/L 23 AND W LINE OF OBERLIN AVE

23-04689



SPLITS/DEEDS PROCESSED
 LORAIN COUNTY TAX MAP DEPARTMENT
 226 MIDDLE AVE. ELYRIA, OH

SURVEYED BY: PATRICK A. MCGANNON SURV # 50884
 CLOSURE: 1: 1192210
 MAP PAGE(S): 02-02-025
 APPROVED BY: AC DATE: May 10, 2023
 SCALE: 1 in = 50 ft PRIOR INSTRUMENT: 2010- 0335494