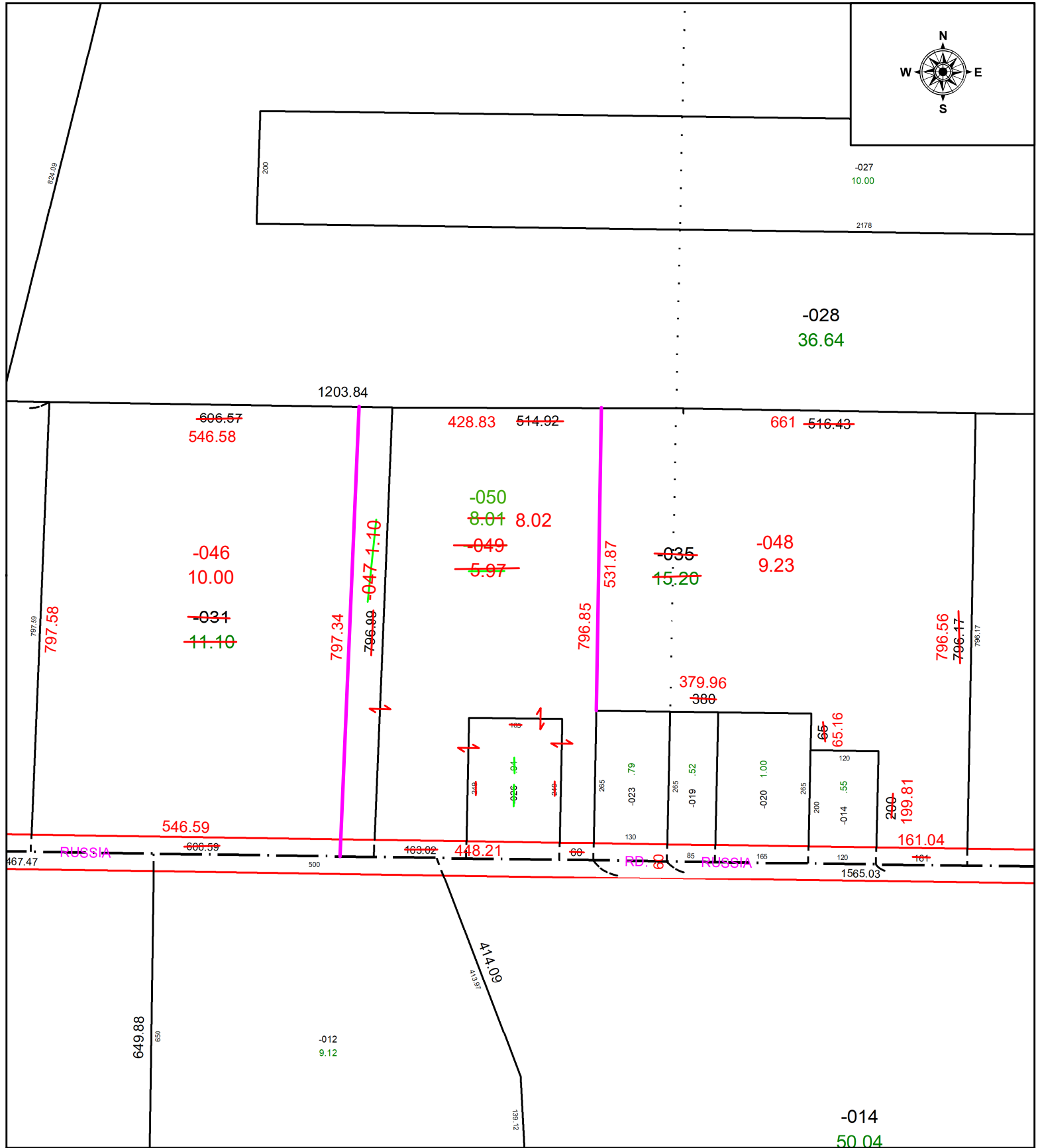
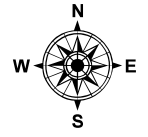


PARENT PARCEL: 09-00-015-000-026, -031, & -035

CHILD PARCEL: 09-00-015-000-046 THRU -050 ACREAGE CORRECTION PER SURVEYOR THOMAS SIMON

STARTING POINT: SOUTHWESTERLY CORNER OF O.L. 15 & THE C/L OF RUSSIA RD

23-04687



**SPLITS/DEEDS PROCESSED**  
LORAIN COUNTY TAX MAP DEPARTMENT  
226 MIDDLE AVE. ELYRIA, OH

SURVEYED BY: THOMAS SIMON SURVEY # 50882  
CLOSURE: 1: 743825  
MAP PAGE(S): 09-00-015  
APPROVED BY: WRZ DATE: 5/8/2023  
SCALE: 1" = 225 PRIOR INSTRUMENT: #2013-0489608